

**www.knittitude.com**

Turquoise Casual Tunic  
Standard Knitting Machine Pattern – Tuck Rib  
S, M, L, XL Sizes



**www.knittitude.com**

Turquoise Casual Tunic  
Standard Knitting Machine Pattern – Tuck Rib  
S, M, L, XL Sizes



**www.knittitude.com**

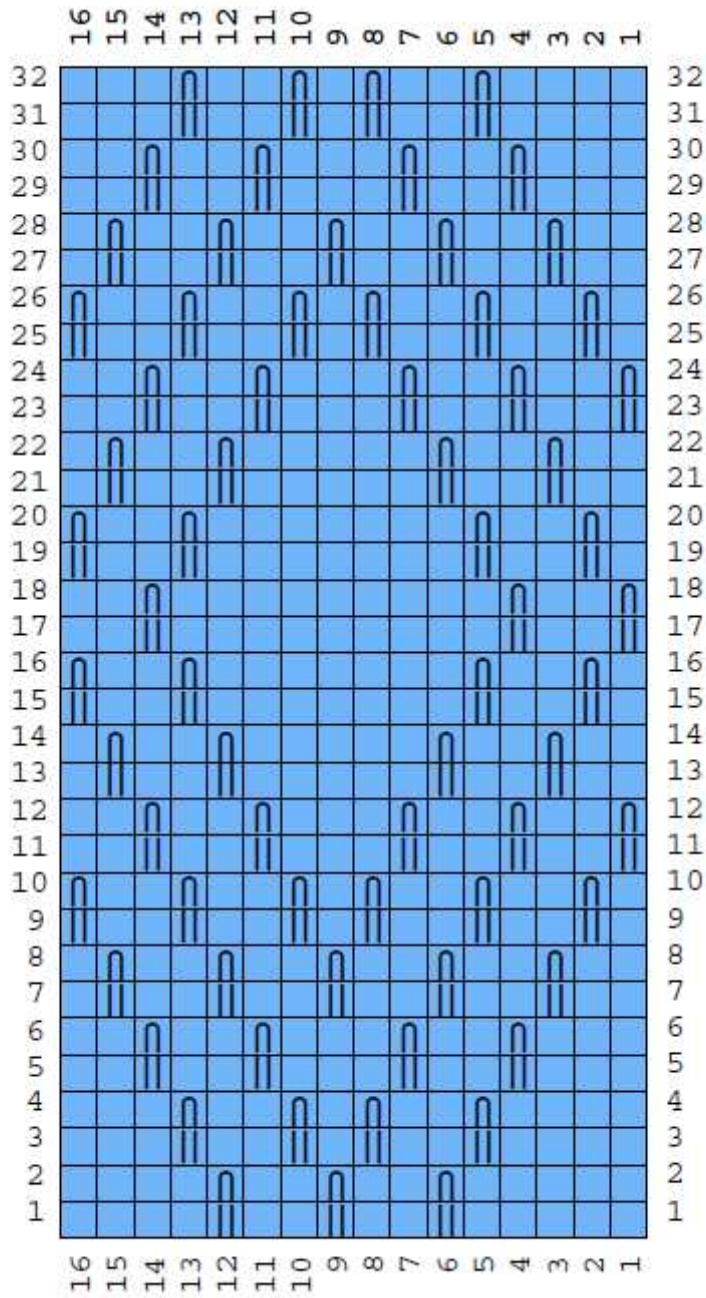
Turquoise Casual Tunic  
Standard Knitting Machine Pattern – Tuck Rib  
S, M, L, XL Sizes





Turquoise Casual Tunic  
 Standard Knitting Machine Pattern – Tuck Rib  
 S, M, L, XL Sizes

The Stitch Pattern Symbols



Symbol

Abbreviation

(blank)

Knit

||

Tuck

∩

Tuck

**www.knittitude.com**  
Turquoise Casual Tunic  
Standard Knitting Machine Pattern – Tuck Rib  
S, M, L, XL Sizes

**Stitch Pattern Text (for the main bed)**

Abbreviation	Knitting instruction
K	Knit.
T	Tuck.

R1: K3, (K2, T1) three times; K4.  
R2: As row 1.  
R3: K4, (T1, K2, T1, K1) twice; K2.  
R4: As row 3.  
R5: K1, [(K2, T1) twice; K1] twice; K1.  
R6: As row 5.  
R7: (K2, T1) five times; K1.  
R8: As row 7.  
R9: K1, T1, K2, (T1, K2, T1, K1) twice; K1, T1.  
R10: As row 9.  
R11: T1, [(K2, T1) twice; K1] twice; K1.  
R12: As row 11.  
R13: K2, (T1, K2) twice; K1, (K2, T1) twice; K1.  
R14: As row 13.  
R15: K1, (T1, K2) twice; K3, (K2, T1) twice.  
R16: As row 15.  
R17: (T1, K2) twice; K7, T1, K2.  
R18: As row 17.  
R19: K1, (T1, K2) twice; K3, (K2, T1) twice.  
R20: As row 19.  
R21: K2, (T1, K2) twice; K1, (K2, T1) twice; K1.  
R22: As row 21.  
R23: T1, [(K2, T1) twice; K1] twice; K1.  
R24: As row 23.  
R25: K1, T1, K2, (T1, K2, T1, K1) twice; K1, T1.  
R26: As row 25.  
R27: (K2, T1) five times; K1.  
R28: As row 27.  
R29: K1, [(K2, T1) twice; K1] twice; K1.  
R30: As row 29.  
R31: K4, (T1, K2, T1, K1) twice; K2.  
R32: As row 31.

I used 2 strands of very thin turquoise 50% acrylic 50% viscose yarn.

**Stitch Pattern Gauge Swatch with Tension 5, Stitch Dial 6:**

- 25.64 Stitches & 58.25 Rows per 10 cm (4 in).
- Or
- Width of 40 stitches - 15.6 cm (6.1 in);
- Height of 60 rows - 10.3 cm (4.1 in).

**www.knittitude.com**  
Turquoise Casual Tunic  
Standard Knitting Machine Pattern – Tuck Rib  
S, M, L, XL Sizes

Measurements			
Size	Bust (cm/in)	Waist (cm/in)	Hip (cm/in)
<b>S 32</b>	82cm / 32"	62 / 24	87 / 34
<b>S 34</b>	87cm / 34"	67 / 26	92 / 36
<b>M 36</b>	92cm / 36"	72 / 28	97 / 38
<b>M 38</b>	97cm / 38"	77 / 30	102 / 40
<b>L 40</b>	102cm / 40"	82 / 32	107 / 42
<b>L 42</b>	107cm / 42"	87 / 34	112 / 44
<b>XL 44</b>	112cm / 44"	92 / 36	117 / 46

**Legend:**

R - row

K - knit (ex: K50 - knit 50 stitches)

Sts - stitches

Dec - decrease

Inc - inscrease

LN - left needle

RN - right needle.

The front and back of this tunic are the same, therefore I will provide only the instructions for one piece and you have to knit 2 of them.

**The welt**

The welt is the same for all sizes. Simply knit 20 rows of K2 P2 rib with stitch dial 6. Make sure you finish with the carriage at right, if it's necessary, knit one more row to position it at the right. Here is a video tutorial for the K2 P2 Rib:

[http://www.youtube.com/watch?v=u90\\_iobGu-0](http://www.youtube.com/watch?v=u90_iobGu-0)

Transfer all the stitches from the ribber to the main bed.

Set RC (row counter) to 0.

**Size S 32**

Cast on 120 sts .. LN60..RN60.

R1: K120.

Rows 2-15: As row 1.

When knitting the next row: Inc 1 sts at left, Inc 1 sts at right.

**www.knittitude.com**  
**Turquoise Casual Tunic**  
**Standard Knitting Machine Pattern – Tuck Rib**  
**S, M, L, XL Sizes**

R16: K122.  
Rows 17-29: As row 16 (without the shaping).  
When knitting the next row: Inc 1 sts at left, Inc 1 sts at right.  
R30: K124.  
Rows 31-44: As row 30 (without the shaping).  
When knitting the next row: Inc 1 sts at left, Inc 1 sts at right.  
R45: K126.  
Rows 46-58: As row 45 (without the shaping).  
When knitting the next row: Inc 1 sts at left, Inc 1 sts at right.  
R59: K128.  
Rows 60-73: As row 59 (without the shaping).  
When knitting the next row: Inc 1 sts at left, Inc 1 sts at right.  
R74: K130.  
Rows 75-88: As row 74 (without the shaping).  
When knitting the next row: Inc 1 sts at left, Inc 1 sts at right.  
R89: K132.  
Rows 90-102: As row 89 (without the shaping).  
When knitting the next row: Inc 1 sts at left, Inc 1 sts at right.  
R103: K134.  
Rows 104-117: As row 103 (without the shaping).  
When knitting the next row: Inc 1 sts at left, Inc 1 sts at right.  
R118: K136.  
Rows 119-131: As row 118 (without the shaping).  
When knitting the next row: Inc 1 sts at left, Inc 1 sts at right.  
R132: K138.  
Rows 133-146: As row 132 (without the shaping).  
When knitting the next row: Inc 1 sts at left, Inc 1 sts at right.  
R147: K140.  
Rows 148-160: As row 147 (without the shaping).  
When knitting the next row: Inc 1 sts at left, Inc 1 sts at right.  
R161: K142.  
Rows 162-175: As row 161 (without the shaping).  
When knitting the next row: Inc 1 sts at left, Inc 1 sts at right.  
R176: K144.  
Rows 177-312: As row 176 (without the shaping).  
When knitting the next row: Dec 5 sts at right.  
R313: K139.  
When knitting the next row: Dec 5 sts at left.  
R314: K134.  
When knitting the next row: Dec 4 sts at right.  
R315: K130.  
When knitting the next row: Dec 4 sts at left.  
R316: K126.  
When knitting the next row: Dec 5 sts at right.  
R317: K121.  
When knitting the next row: Dec 5 sts at left.  
R318: K116.  
When knitting the next row: Prepare LN7..RN7 for centre shaping, Hold LN58..LN8, Dec 5 sts at right.  
R319: K46.  
When knitting the next row: Dec 12 sts at left.  
R320: K34.  
When knitting the next row: Dec 4 sts at right.  
R321: K30.  
When knitting the next row: Dec 4 sts at left.  
R322: K26.  
When knitting the next row: Dec 5 sts at right.  
R323: K21.



**www.knittitude.com**  
Turquoise Casual Tunic  
Standard Knitting Machine Pattern – Tuck Rib  
S, M, L, XL Sizes

When knitting the next row: Dec 4 sts at left.  
R324: K17.  
When knitting the next row: Dec 5 sts at right.  
R325: K12.  
When knitting the next row: Dec 1 sts at left.  
R326: K11.  
When knitting the next row: Dec 1 sts at left, Dec 4 sts at right.  
R327: K6.  
When knitting the next row: Dec 1 sts at left.  
R328: K5.  
Cast off remainder. Then select Ready.  
----- New section -----  
Pick up 51  
R319: K51.  
When knitting the next row: Dec 5 sts at left.  
R320: K46.  
When knitting the next row: Dec 12 sts at right.  
R321: K34.  
When knitting the next row: Dec 4 sts at left.  
R322: K30.  
When knitting the next row: Dec 4 sts at right.  
R323: K26.  
When knitting the next row: Dec 5 sts at left.  
R324: K21.  
When knitting the next row: Dec 4 sts at right.  
R325: K17.  
When knitting the next row: Dec 5 sts at left, Dec 1 sts at right.  
R326: K11.  
When knitting the next row: Dec 1 sts at right.  
R327: K10.  
When knitting the next row: Dec 4 sts at left, Dec 1 sts at right.  
R328: K5.  
Cast off remainder. End of piece.

**Size S 34**

Cast on 128 sts.. LN64..RN64.  
R1: K128.  
Rows 2-14: As row 1.  
When knitting the next row: Inc 1 sts at left, Inc 1 sts at right.  
R15: K130.  
Rows 16-29: As row 15 (without the shaping).  
When knitting the next row: Inc 1 sts at left, Inc 1 sts at right.  
R30: K132.  
Rows 31-43: As row 30 (without the shaping).  
When knitting the next row: Inc 1 sts at left, Inc 1 sts at right.  
R44: K134.  
Rows 45-58: As row 44 (without the shaping).  
When knitting the next row: Inc 1 sts at left, Inc 1 sts at right.  
R59: K136.  
Rows 60-72: As row 59 (without the shaping).  
When knitting the next row: Inc 1 sts at left, Inc 1 sts at right.  
R73: K138.  
Rows 74-86: As row 73 (without the shaping).  
When knitting the next row: Inc 1 sts at left, Inc 1 sts at right.  
R87: K140.

**www.knittitude.com**  
**Turquoise Casual Tunic**  
**Standard Knitting Machine Pattern – Tuck Rib**  
**S, M, L, XL Sizes**

Rows 88-101: As row 87 (without the shaping).  
When knitting the next row: Inc 1 sts at left, Inc 1 sts at right.  
R102: K142.  
Rows 103-115: As row 102 (without the shaping).  
When knitting the next row: Inc 1 sts at left, Inc 1 sts at right.  
R116: K144.  
Rows 117-129: As row 116 (without the shaping).  
When knitting the next row: Inc 1 sts at left, Inc 1 sts at right.  
R130: K146.  
Rows 131-144: As row 130 (without the shaping).  
When knitting the next row: Inc 1 sts at left, Inc 1 sts at right.  
R145: K148.  
Rows 146-158: As row 145 (without the shaping).  
When knitting the next row: Inc 1 sts at left, Inc 1 sts at right.  
R159: K150.  
Rows 160-173: As row 159 (without the shaping).  
When knitting the next row: Inc 1 sts at left, Inc 1 sts at right.  
R174: K152.  
Rows 175-187: As row 174 (without the shaping).  
When knitting the next row: Inc 1 sts at left, Inc 1 sts at right.  
R188: K154.  
Rows 189-332: As row 188 (without the shaping).  
When knitting the next row: Dec 4 sts at right.  
R333: K150.  
When knitting the next row: Dec 4 sts at left.  
R334: K146.  
When knitting the next row: Dec 5 sts at right.  
R335: K141.  
When knitting the next row: Dec 5 sts at left.  
R336: K136.  
When knitting the next row: Dec 4 sts at right.  
R337: K132.  
When knitting the next row: Dec 4 sts at left.  
R338: K128.  
When knitting the next row: Dec 5 sts at right.  
R339: K123.  
When knitting the next row: Dec 5 sts at left, Prepare LN7..RN7 for centre  
shaping, Hold RN8..RN59.  
R340: K52.  
When knitting the next row: Dec 13 sts at right.  
R341: K39.  
When knitting the next row: Dec 4 sts at left.  
R342: K35.  
When knitting the next row: Dec 5 sts at right.  
R343: K30.  
When knitting the next row: Dec 5 sts at left.  
R344: K25.  
When knitting the next row: Dec 4 sts at right.  
R345: K21.  
When knitting the next row: Dec 4 sts at left.  
R346: K17.  
When knitting the next row: Dec 1 sts at right.  
R347: K16.  
When knitting the next row: Dec 5 sts at left, Dec 1 sts at right.  
R348: K10.  
When knitting the next row: Dec 1 sts at right.  
R349: K9.  
When knitting the next row: Dec 4 sts at left.

**www.knittitude.com**  
Turquoise Casual Tunic  
Standard Knitting Machine Pattern – Tuck Rib  
S, M, L, XL Sizes

R350: K5.

Cast off remainder. Then select Ready.

----- New section -----

Pick up 52

R340: K52.

When knitting the next row: Dec 4 sts at right.

R341: K48.

When knitting the next row: Dec 13 sts at left.

R342: K35.

When knitting the next row: Dec 5 sts at right.

R343: K30.

When knitting the next row: Dec 5 sts at left.

R344: K25.

When knitting the next row: Dec 4 sts at right.

R345: K21.

When knitting the next row: Dec 4 sts at left.

R346: K17.

When knitting the next row: Dec 1 sts at left, Dec 5 sts at right.

R347: K11.

When knitting the next row: Dec 1 sts at left.

R348: K10.

When knitting the next row: Dec 1 sts at left, Dec 4 sts at right.

R349: K5.

R350: As row 349 (without the shaping).

Cast off remainder. End of piece.

**Size M 36**

Cast on 136 sts .. LN68..RN68.

R1: K136.

Rows 2-15: As row 1.

When knitting the next row: Inc 1 sts at left, Inc 1 sts at right.

R16: K138.

Rows 17-30: As row 16 (without the shaping).

When knitting the next row: Inc 1 sts at left, Inc 1 sts at right.

R31: K140.

Rows 32-45: As row 31 (without the shaping).

When knitting the next row: Inc 1 sts at left, Inc 1 sts at right.

R46: K142.

Rows 47-61: As row 46 (without the shaping).

When knitting the next row: Inc 1 sts at left, Inc 1 sts at right.

R62: K144.

Rows 63-76: As row 62 (without the shaping).

When knitting the next row: Inc 1 sts at left, Inc 1 sts at right.

R77: K146.

Rows 78-91: As row 77 (without the shaping).

When knitting the next row: Inc 1 sts at left, Inc 1 sts at right.

R92: K148.

Rows 93-106: As row 92 (without the shaping).

When knitting the next row: Inc 1 sts at left, Inc 1 sts at right.

R107: K150.

Rows 108-121: As row 107 (without the shaping).

When knitting the next row: Inc 1 sts at left, Inc 1 sts at right.

R122: K152.

Rows 123-136: As row 122 (without the shaping).

When knitting the next row: Inc 1 sts at left, Inc 1 sts at right.

**www.knittitude.com**  
**Turquoise Casual Tunic**  
**Standard Knitting Machine Pattern – Tuck Rib**  
**S, M, L, XL Sizes**

R137: K154.  
Rows 138-152: As row 137 (without the shaping).  
When knitting the next row: Inc 1 sts at left, Inc 1 sts at right.  
R153: K156.  
Rows 154-167: As row 153 (without the shaping).  
When knitting the next row: Inc 1 sts at left, Inc 1 sts at right.  
R168: K158.  
Rows 169-182: As row 168 (without the shaping).  
When knitting the next row: Inc 1 sts at left, Inc 1 sts at right.  
R183: K160.  
Rows 184-197: As row 183 (without the shaping).  
When knitting the next row: Inc 1 sts at left, Inc 1 sts at right.  
R198: K162.  
Rows 199-352: As row 198.  
When knitting the next row: Dec 5 sts at right.  
R353: K157.  
When knitting the next row: Dec 5 sts at left.  
R354: K152.  
When knitting the next row: Dec 4 sts at right.  
R355: K148.  
When knitting the next row: Dec 4 sts at left.  
R356: K144.  
When knitting the next row: Dec 5 sts at right.  
R357: K139.  
When knitting the next row: Dec 5 sts at left.  
R358: K134.  
When knitting the next row: Dec 5 sts at right.  
R359: K129.  
When knitting the next row: Dec 5 sts at left, Prepare LN8..RN8 for centre  
shaping, Hold RN9..RN62.  
R360: K54.  
When knitting the next row: Dec 13 sts at right.  
R361: K41.  
When knitting the next row: Dec 4 sts at left.  
R362: K37.  
When knitting the next row: Dec 5 sts at right.  
R363: K32.  
When knitting the next row: Dec 5 sts at left.  
R364: K27.  
When knitting the next row: Dec 5 sts at right.  
R365: K22.  
When knitting the next row: Dec 5 sts at left.  
R366: K17.  
When knitting the next row: Dec 1 sts at right.  
R367: K16.  
When knitting the next row: Dec 5 sts at left, Dec 1 sts at right.  
R368: K10.  
When knitting the next row: Dec 1 sts at right.  
R369: K9.  
When knitting the next row: Dec 4 sts at left.  
R370: K5.  
Cast off remainder. Then select Ready.  
----- New section -----  
Pick up 54  
R360: K54.  
When knitting the next row: Dec 4 sts at right.  
R361: K50.  
When knitting the next row: Dec 13 sts at left.

**www.knittitude.com**  
**Turquoise Casual Tunic**  
**Standard Knitting Machine Pattern – Tuck Rib**  
**S, M, L, XL Sizes**

R362: K37.  
When knitting the next row: Dec 5 sts at right.  
R363: K32.  
When knitting the next row: Dec 5 sts at left.  
R364: K27.  
When knitting the next row: Dec 5 sts at right.  
R365: K22.  
When knitting the next row: Dec 5 sts at left.  
R366: K17.  
When knitting the next row: Dec 1 sts at left, Dec 5 sts at right.  
R367: K11.  
When knitting the next row: Dec 1 sts at left.  
R368: K10.  
When knitting the next row: Dec 1 sts at left, Dec 4 sts at right.  
R369: K5.  
R370: As row 369 (without the shaping).  
Cast off remainder. End of piece.

**Size M 38**

Cast on 144 sts .. LN72..RN72.  
R1: K144.  
Rows 2-15: As row 1.  
When knitting the next row: Inc 1 sts at left, Inc 1 sts at right.  
R16: K146.  
Rows 17-30: As row 16 (without the shaping).  
When knitting the next row: Inc 1 sts at left, Inc 1 sts at right.  
R31: K148.  
Rows 32-45: As row 31 (without the shaping).  
When knitting the next row: Inc 1 sts at left, Inc 1 sts at right.  
R46: K150.  
Rows 47-59: As row 46 (without the shaping).  
When knitting the next row: Inc 1 sts at left, Inc 1 sts at right.  
R60: K152.  
Rows 61-74: As row 60 (without the shaping).  
When knitting the next row: Inc 1 sts at left, Inc 1 sts at right.  
R75: K154.  
Rows 76-89: As row 75 (without the shaping).  
When knitting the next row: Inc 1 sts at left, Inc 1 sts at right.  
R90: K156.  
Rows 91-104: As row 90 (without the shaping).  
When knitting the next row: Inc 1 sts at left, Inc 1 sts at right.  
R105: K158.  
Rows 106-119: As row 105 (without the shaping).  
When knitting the next row: Inc 1 sts at left, Inc 1 sts at right.  
R120: K160.  
Rows 121-134: As row 120 (without the shaping).  
When knitting the next row: Inc 1 sts at left, Inc 1 sts at right.  
R135: K162.  
Rows 136-149: As row 135 (without the shaping).  
When knitting the next row: Inc 1 sts at left, Inc 1 sts at right.  
R150: K164.  
Rows 151-163: As row 150 (without the shaping).  
When knitting the next row: Inc 1 sts at left, Inc 1 sts at right.  
R164: K166.  
Rows 165-178: As row 164 (without the shaping).

**www.knittitude.com**  
**Turquoise Casual Tunic**  
**Standard Knitting Machine Pattern – Tuck Rib**  
**S, M, L, XL Sizes**

When knitting the next row: Inc 1 sts at left, Inc 1 sts at right.  
R179: K168.  
Rows 180-193: As row 179 (without the shaping).  
When knitting the next row: Inc 1 sts at left, Inc 1 sts at right.  
R194: K170.  
Rows 195-208: As row 194 (without the shaping).  
When knitting the next row: Inc 1 sts at left, Inc 1 sts at right.  
R209: K172.  
Rows 210-372: As row 209.  
When knitting the next row: Dec 5 sts at right.  
R373: K167.  
When knitting the next row: Dec 5 sts at left.  
R374: K162.  
When knitting the next row: Dec 5 sts at right.  
R375: K157.  
When knitting the next row: Dec 5 sts at left.  
R376: K152.  
When knitting the next row: Dec 5 sts at right.  
R377: K147.  
When knitting the next row: Dec 5 sts at left.  
R378: K142.  
When knitting the next row: Prepare LN8..RN8 for centre shaping, Hold LN71..LN9, Dec 5 sts at right.  
R379: K58.  
When knitting the next row: Dec 7 sts at left.  
R380: K51.  
When knitting the next row: Dec 5 sts at right.  
R381: K46.  
When knitting the next row: Dec 7 sts at left.  
R382: K39.  
When knitting the next row: Dec 5 sts at right.  
R383: K34.  
When knitting the next row: Dec 5 sts at left.  
R384: K29.  
When knitting the next row: Dec 5 sts at right.  
R385: K24.  
When knitting the next row: Dec 5 sts at left.  
R386: K19.  
When knitting the next row: Dec 1 sts at left, Dec 5 sts at right.  
R387: K13.  
When knitting the next row: Dec 1 sts at left.  
R388: K12.  
When knitting the next row: Dec 1 sts at left, Dec 5 sts at right.  
R389: K6.  
When knitting the next row: Dec 1 sts at left.  
R390: K5.  
Cast off remainder. Then select Ready.  
----- New section -----  
Pick up 63  
R379: K63.  
When knitting the next row: Dec 5 sts at left.  
R380: K58.  
When knitting the next row: Dec 14 sts at right.  
R381: K44.  
When knitting the next row: Dec 5 sts at left.  
R382: K39.  
When knitting the next row: Dec 5 sts at right.  
R383: K34.

**www.knittitude.com**  
**Turquoise Casual Tunic**  
**Standard Knitting Machine Pattern – Tuck Rib**  
**S, M, L, XL Sizes**

When knitting the next row: Dec 5 sts at left.  
R384: K29.  
When knitting the next row: Dec 5 sts at right.  
R385: K24.  
When knitting the next row: Dec 5 sts at left.  
R386: K19.  
When knitting the next row: Dec 1 sts at right.  
R387: K18.  
When knitting the next row: Dec 5 sts at left, Dec 1 sts at right.  
R388: K12.  
When knitting the next row: Dec 1 sts at right.  
R389: K11.  
When knitting the next row: Dec 5 sts at left, Dec 1 sts at right.  
R390: K5.  
Cast off remainder. End of piece.

**Size L 40**

Cast on 150 sts.. LN75..RN75.  
R1: K150.  
Rows 2-15: As row 1.  
When knitting the next row: Inc 1 sts at left, Inc 1 sts at right.  
R16: K152.  
Rows 17-29: As row 16 (without the shaping).  
When knitting the next row: Inc 1 sts at left, Inc 1 sts at right.  
R30: K154.  
Rows 31-44: As row 30 (without the shaping).  
When knitting the next row: Inc 1 sts at left, Inc 1 sts at right.  
R45: K156.  
Rows 46-59: As row 45 (without the shaping).  
When knitting the next row: Inc 1 sts at left, Inc 1 sts at right.  
R60: K158.  
Rows 61-73: As row 60 (without the shaping).  
When knitting the next row: Inc 1 sts at left, Inc 1 sts at right.  
R74: K160.  
Rows 75-88: As row 74 (without the shaping).  
When knitting the next row: Inc 1 sts at left, Inc 1 sts at right.  
R89: K162.  
Rows 90-103: As row 89 (without the shaping).  
When knitting the next row: Inc 1 sts at left, Inc 1 sts at right.  
R104: K164.  
Rows 105-117: As row 104 (without the shaping).  
When knitting the next row: Inc 1 sts at left, Inc 1 sts at right.  
R118: K166.  
Rows 119-132: As row 118 (without the shaping).  
When knitting the next row: Inc 1 sts at left, Inc 1 sts at right.  
R133: K168.  
Rows 134-147: As row 133 (without the shaping).  
When knitting the next row: Inc 1 sts at left, Inc 1 sts at right.  
R148: K170.  
Rows 149-161: As row 148 (without the shaping).  
When knitting the next row: Inc 1 sts at left, Inc 1 sts at right.  
R162: K172.  
Rows 163-176: As row 162 (without the shaping).  
When knitting the next row: Inc 1 sts at left, Inc 1 sts at right.  
R177: K174.

**www.knittitude.com**  
**Turquoise Casual Tunic**  
**Standard Knitting Machine Pattern – Tuck Rib**  
**S, M, L, XL Sizes**

Rows 178-191: As row 177 (without the shaping).  
When knitting the next row: Inc 1 sts at left, Inc 1 sts at right.  
R192: K176.  
Rows 193-205: As row 192 (without the shaping).  
When knitting the next row: Inc 1 sts at left, Inc 1 sts at right.  
R206: K178.  
Rows 207-220: As row 206 (without the shaping).  
When knitting the next row: Inc 1 sts at left, Inc 1 sts at right.  
R221: K180.  
Rows 222-392: As row 221 (without the shaping).  
When knitting the next row: Dec 5 sts at right.  
R393: K175.  
When knitting the next row: Dec 5 sts at left.  
R394: K170.  
When knitting the next row: Dec 4 sts at right.  
R395: K166.  
When knitting the next row: Dec 4 sts at left.  
R396: K162.  
When knitting the next row: Dec 5 sts at right.  
R397: K157.  
When knitting the next row: Dec 5 sts at left.  
R398: K152.  
When knitting the next row: Dec 5 sts at right.  
R399: K147.  
When knitting the next row: Dec 5 sts at left, Prepare LN8..RN8 for centre  
shaping, Hold RN9..RN71.  
R400: K63.  
When knitting the next row: Dec 16 sts at right.  
R401: K47.  
When knitting the next row: Dec 5 sts at left.  
R402: K42.  
When knitting the next row: Dec 4 sts at right.  
R403: K38.  
When knitting the next row: Dec 4 sts at left.  
R404: K34.  
When knitting the next row: Dec 3 sts at right.  
R405: K31.  
When knitting the next row: Dec 5 sts at left.  
R406: K26.  
When knitting the next row: Dec 3 sts at right.  
R407: K23.  
When knitting the next row: Dec 5 sts at left, Dec 1 sts at right.  
R408: K17.  
When knitting the next row: Dec 1 sts at right.  
R409: K16.  
When knitting the next row: Dec 5 sts at left, Dec 1 sts at right.  
R410: K10.  
When knitting the next row: Dec 1 sts at right.  
R411: K9.  
When knitting the next row: Dec 4 sts at left.  
R412: K5.  
Cast off remainder. Then select Ready.  
----- New section -----  
Pick up 63  
R400: K63.  
When knitting the next row: Dec 5 sts at right.  
R401: K58.  
When knitting the next row: Dec 16 sts at left.



**www.knittitude.com**  
**Turquoise Casual Tunic**  
**Standard Knitting Machine Pattern – Tuck Rib**  
**S, M, L, XL Sizes**

R402: K42.  
When knitting the next row: Dec 4 sts at right.  
R403: K38.  
When knitting the next row: Dec 4 sts at left.  
R404: K34.  
When knitting the next row: Dec 5 sts at right.  
R405: K29.  
When knitting the next row: Dec 3 sts at left.  
R406: K26.  
When knitting the next row: Dec 5 sts at right.  
R407: K21.  
When knitting the next row: Dec 4 sts at left.  
R408: K17.  
When knitting the next row: Dec 1 sts at left, Dec 5 sts at right.  
R409: K11.  
When knitting the next row: Dec 1 sts at left.  
R410: K10.  
When knitting the next row: Dec 1 sts at left, Dec 4 sts at right.  
R411: K5.  
R412: As row 411 (without the shaping).  
Cast off remainder. End of piece.

**Size L 42**

Cast on 158 sts ..LN79..RN79.  
R1: K158.  
Rows 2-14: As row 1.  
When knitting the next row: Inc 1 sts at left, Inc 1 sts at right.  
R15: K160.  
Rows 16-29: As row 15 (without the shaping).  
When knitting the next row: Inc 1 sts at left, Inc 1 sts at right.  
R30: K162.  
Rows 31-43: As row 30 (without the shaping).  
When knitting the next row: Inc 1 sts at left, Inc 1 sts at right.  
R44: K164.  
Rows 45-58: As row 44 (without the shaping).  
When knitting the next row: Inc 1 sts at left, Inc 1 sts at right.  
R59: K166.  
Rows 60-72: As row 59 (without the shaping).  
When knitting the next row: Inc 1 sts at left, Inc 1 sts at right.  
R73: K168.  
Rows 74-86: As row 73 (without the shaping).  
When knitting the next row: Inc 1 sts at left, Inc 1 sts at right.  
R87: K170.  
Rows 88-101: As row 87 (without the shaping).  
When knitting the next row: Inc 1 sts at left, Inc 1 sts at right.  
R102: K172.  
Rows 103-115: As row 102 (without the shaping).  
When knitting the next row: Inc 1 sts at left, Inc 1 sts at right.  
R116: K174.  
Rows 117-129: As row 116 (without the shaping).  
When knitting the next row: Inc 1 sts at left, Inc 1 sts at right.  
R130: K176.  
Rows 131-144: As row 130 (without the shaping).  
When knitting the next row: Inc 1 sts at left, Inc 1 sts at right.  
R145: K178.

**www.knittitude.com**  
**Turquoise Casual Tunic**  
**Standard Knitting Machine Pattern – Tuck Rib**  
**S, M, L, XL Sizes**

Rows 146-158: As row 145 (without the shaping).  
When knitting the next row: Inc 1 sts at left, Inc 1 sts at right.  
R159: K180.  
Rows 160-173: As row 159 (without the shaping).  
When knitting the next row: Inc 1 sts at left, Inc 1 sts at right.  
R174: K182.  
Rows 175-187: As row 174 (without the shaping).  
When knitting the next row: Inc 1 sts at left, Inc 1 sts at right.  
R188: K184.  
Rows 189-201: As row 188 (without the shaping).  
When knitting the next row: Inc 1 sts at left, Inc 1 sts at right.  
R202: K186.  
Rows 203-216: As row 202 (without the shaping).  
When knitting the next row: Inc 1 sts at left, Inc 1 sts at right.  
R217: K188.  
Rows 218-230: As row 217 (without the shaping).  
When knitting the next row: Inc 1 sts at left, Inc 1 sts at right.  
R231: K190.  
Rows 232-410: As row 231.  
When knitting the next row: Dec 5 sts at right.  
R411: K185.  
When knitting the next row: Dec 5 sts at left.  
R412: K180.  
When knitting the next row: Dec 4 sts at right.  
R413: K176.  
When knitting the next row: Dec 4 sts at left.  
R414: K172.  
When knitting the next row: Dec 5 sts at right.  
R415: K167.  
When knitting the next row: Dec 5 sts at left.  
R416: K162.  
When knitting the next row: Dec 4 sts at right.  
R417: K158.  
When knitting the next row: Dec 4 sts at left.  
R418: K154.  
When knitting the next row: Prepare LN9..RN9 for centre shaping, Hold LN77..LN10, Dec 5 sts at right.  
R419: K63.  
When knitting the next row: Dec 8 sts at left.  
R420: K55.  
When knitting the next row: Dec 4 sts at right.  
R421: K51.  
When knitting the next row: Dec 8 sts at left.  
R422: K43.  
When knitting the next row: Dec 5 sts at right.  
R423: K38.  
When knitting the next row: Dec 4 sts at left.  
R424: K34.  
When knitting the next row: Dec 5 sts at right.  
R425: K29.  
When knitting the next row: Dec 4 sts at left.  
R426: K25.  
When knitting the next row: Dec 4 sts at right.  
R427: K21.  
When knitting the next row: Dec 4 sts at left.  
R428: K17.  
When knitting the next row: Dec 1 sts at left, Dec 5 sts at right.  
R429: K11.

**www.knittitude.com**  
**Turquoise Casual Tunic**  
**Standard Knitting Machine Pattern – Tuck Rib**  
**S, M, L, XL Sizes**

When knitting the next row: Dec 1 sts at left.  
R430: K10.  
When knitting the next row: Dec 1 sts at left, Dec 4 sts at right.  
R431: K5.  
R432: As row 431 (without the shaping).  
Cast off remainder. Then select Ready.  
----- New section -----  
Pick up 68  
R419: K68.  
When knitting the next row: Dec 5 sts at left.  
R420: K63.  
When knitting the next row: Dec 16 sts at right.  
R421: K47.  
When knitting the next row: Dec 4 sts at left.  
R422: K43.  
When knitting the next row: Dec 4 sts at right.  
R423: K39.  
When knitting the next row: Dec 5 sts at left.  
R424: K34.  
When knitting the next row: Dec 4 sts at right.  
R425: K30.  
When knitting the next row: Dec 5 sts at left.  
R426: K25.  
When knitting the next row: Dec 3 sts at right.  
R427: K22.  
When knitting the next row: Dec 4 sts at left, Dec 1 sts at right.  
R428: K17.  
When knitting the next row: Dec 1 sts at right.  
R429: K16.  
When knitting the next row: Dec 5 sts at left, Dec 1 sts at right.  
R430: K10.  
When knitting the next row: Dec 1 sts at right.  
R431: K9.  
When knitting the next row: Dec 4 sts at left.  
R432: K5.  
Cast off remainder. End of piece.

**Size XL 44**

Cast on 166 sts ..LN83..RN83.  
R1: K166.  
Rows 2-14: As row 1.  
When knitting the next row: Inc 1 sts at left, Inc 1 sts at right.  
R15: K168.  
Rows 16-28: As row 15 (without the shaping).  
When knitting the next row: Inc 1 sts at left, Inc 1 sts at right.  
R29: K170.  
Rows 30-43: As row 29 (without the shaping).  
When knitting the next row: Inc 1 sts at left, Inc 1 sts at right.  
R44: K172.  
Rows 45-57: As row 44 (without the shaping).  
When knitting the next row: Inc 1 sts at left, Inc 1 sts at right.  
R58: K174.  
Rows 59-71: As row 58 (without the shaping).  
When knitting the next row: Inc 1 sts at left, Inc 1 sts at right.  
R72: K176.

**www.knittitude.com**  
**Turquoise Casual Tunic**  
**Standard Knitting Machine Pattern – Tuck Rib**  
**S, M, L, XL Sizes**

Rows 73-85: As row 72 (without the shaping).  
When knitting the next row: Inc 1 sts at left, Inc 1 sts at right.  
R86: K178.  
Rows 87-99: As row 86 (without the shaping).  
When knitting the next row: Inc 1 sts at left, Inc 1 sts at right.  
R100: K180.  
Rows 101-113: As row 100 (without the shaping).  
When knitting the next row: Inc 1 sts at left, Inc 1 sts at right.  
R114: K182.  
Rows 115-128: As row 114 (without the shaping).  
When knitting the next row: Inc 1 sts at left, Inc 1 sts at right.  
R129: K184.  
Rows 130-142: As row 129 (without the shaping).  
When knitting the next row: Inc 1 sts at left, Inc 1 sts at right.  
R143: K186.  
Rows 144-156: As row 143 (without the shaping).  
When knitting the next row: Inc 1 sts at left, Inc 1 sts at right.  
R157: K188.  
Rows 158-170: As row 157 (without the shaping).  
When knitting the next row: Inc 1 sts at left, Inc 1 sts at right.  
R171: K190.  
Rows 172-184: As row 171 (without the shaping).  
When knitting the next row: Inc 1 sts at left, Inc 1 sts at right.  
R185: K192.  
Rows 186-198: As row 185 (without the shaping).  
When knitting the next row: Inc 1 sts at left, Inc 1 sts at right.  
R199: K194.  
Rows 200-213: As row 199 (without the shaping).  
When knitting the next row: Inc 1 sts at left, Inc 1 sts at right.  
R214: K196.  
Rows 215-227: As row 214 (without the shaping).  
When knitting the next row: Inc 1 sts at left, Inc 1 sts at right.  
R228: K198.  
Rows 229-241: As row 228 (without the shaping).  
When knitting the next row: Inc 1 sts at left, Inc 1 sts at right.  
R242: K200.  
Rows 243-430: As row 242.  
When knitting the next row: Dec 5 sts at right.  
R431: K195.  
When knitting the next row: Dec 5 sts at left.  
R432: K190.  
When knitting the next row: Dec 5 sts at right.  
R433: K185.  
When knitting the next row: Dec 5 sts at left.  
R434: K180.  
When knitting the next row: Dec 5 sts at right.  
R435: K175.  
When knitting the next row: Dec 5 sts at left.  
R436: K170.  
When knitting the next row: Dec 5 sts at right.  
R437: K165.  
When knitting the next row: Dec 5 sts at left.  
R438: K160.  
When knitting the next row: Prepare LN9..RN9 for centre shaping, Hold LN80..LN10, Dec 5 sts at right.  
R439: K66.  
When knitting the next row: Dec 9 sts at left.  
R440: K57.

**www.knittitude.com**  
Turquoise Casual Tunic  
Standard Knitting Machine Pattern – Tuck Rib  
S, M, L, XL Sizes

When knitting the next row: Dec 4 sts at right.  
R441: K53.  
When knitting the next row: Dec 8 sts at left.  
R442: K45.  
When knitting the next row: Dec 5 sts at right.  
R443: K40.  
When knitting the next row: Dec 4 sts at left.  
R444: K36.  
When knitting the next row: Dec 5 sts at right.  
R445: K31.  
When knitting the next row: Dec 4 sts at left.  
R446: K27.  
When knitting the next row: Dec 5 sts at right.  
R447: K22.  
When knitting the next row: Dec 4 sts at left.  
R448: K18.  
When knitting the next row: Dec 1 sts at left, Dec 5 sts at right.  
R449: K12.  
When knitting the next row: Dec 1 sts at left.  
R450: K11.  
When knitting the next row: Dec 1 sts at left, Dec 5 sts at right.  
R451: K5.  
R452: As row 451 (without the shaping).  
Cast off remainder. Then select Ready.  
----- New section -----  
Pick up 71  
R439: K71.  
When knitting the next row: Dec 5 sts at left.  
R440: K66.  
When knitting the next row: Dec 17 sts at right.  
R441: K49.  
When knitting the next row: Dec 4 sts at left.  
R442: K45.  
When knitting the next row: Dec 4 sts at right.  
R443: K41.  
When knitting the next row: Dec 5 sts at left.  
R444: K36.  
When knitting the next row: Dec 4 sts at right.  
R445: K32.  
When knitting the next row: Dec 5 sts at left.  
R446: K27.  
When knitting the next row: Dec 3 sts at right.  
R447: K24.  
When knitting the next row: Dec 5 sts at left, Dec 1 sts at right.  
R448: K18.  
When knitting the next row: Dec 1 sts at right.  
R449: K17.  
When knitting the next row: Dec 5 sts at left, Dec 1 sts at right.  
R450: K11.  
When knitting the next row: Dec 1 sts at right.  
R451: K10.  
When knitting the next row: Dec 5 sts at left.  
R452: K5.  
Cast off remainder. End of piece.

**www.knittitude.com**  
Turquoise Casual Tunic  
Standard Knitting Machine Pattern – Tuck Rib  
S, M, L, XL Sizes

**The Sleeve Margins**

Sew the shoulders together and put the sleeve margin on the machine with the wrong side facing you, first on the main bed and then move the necessary stitches on the ribber for the K2 P2 Rib. Knit 20 rows of K2 P2 with stitch dial 6, move all the stitches on the main bed, knit one more row with stitch dial 10 and cast off.

Knit the other identical piece, sew the tunic together using the Mattress Stitch Seam method and steam it using a garment steamer.

If you have any questions, feel free to contact me at ***info@knittitude.com***.

If you desire to write a review for this pattern, please do so at this page:

<http://knittitude.com/casual-turquoise-tunic-machine-knitting-pattern/>

Thank you for download,

Happy Knitting,

Nicoleta Ganea

<http://knittitude.com>