

www.knittitude.com

Short Sweater

Standard Machine Knitting Pattern – Tuck



www.knittitude.com
Short Sweater
Standard Machine Knitting Pattern – Tuck



For this pattern I used my [Silver Reed SK840](#) standard electronic knitting machine.

I used 3 strands of very thin dark dirty rose cotton yarn (for lace). The finished sweater (size S) weights 180gr (6.35oz).

Main Tensions:

- 26.67 Stitches & 66.67 Rows per 10 cm (4 in)

or

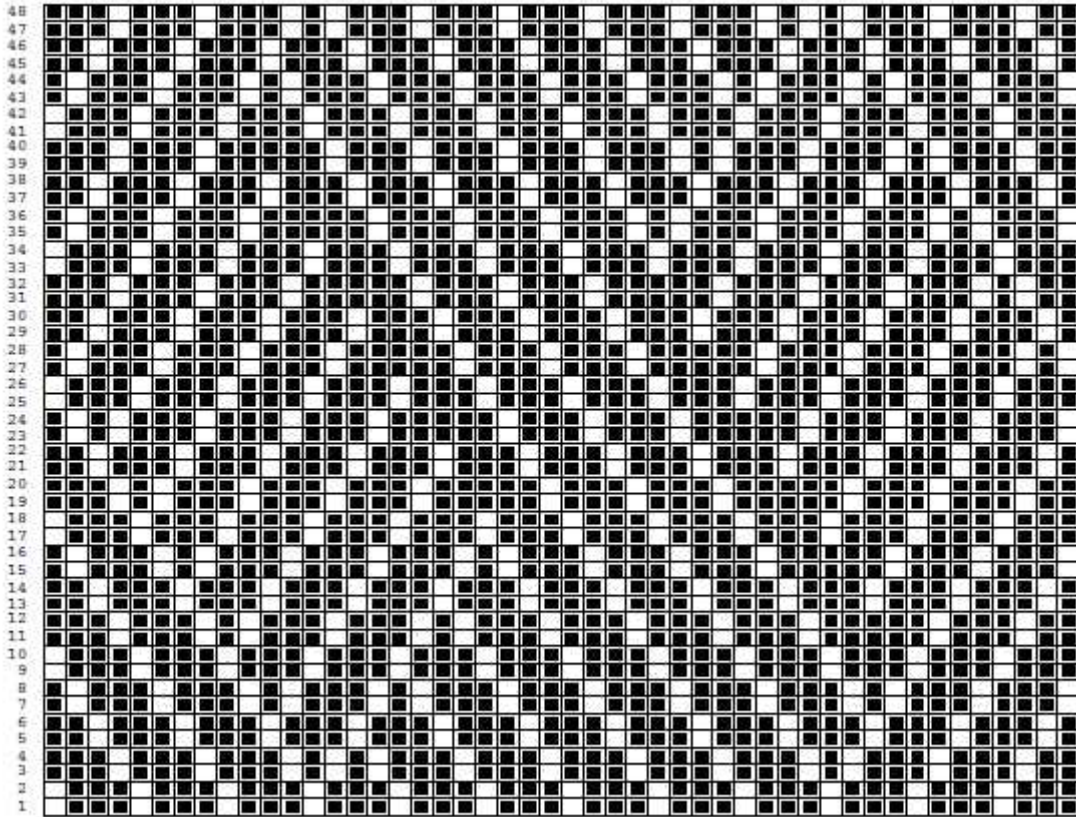
- width of 40 stitches: 15 cm (5.91 in)

- height of 60 rows: 9 cm (3.54 in).

www.knittitude.com
 Short Sweater
 Standard Machine Knitting Pattern – Tuck

Tension dial setting sizes: Tension 5, Stitch Dial 5

Stitch Pattern:



| Symbol | Abbreviation |
|--------------|----------------------|
| (blank) | K |
| | T |
| ∩ | T |
| Abbreviation | Knitting instruction |
| K | Knit. T |
| Tuck. | |

www.knittitude.com
Short Sweater
Standard Machine Knitting Pattern – Tuck

Instructions for tuck pattern

R1: (WS) (T1, K3) 12 times.
R2: As row 1.
R3: (K3, T1) three times; K1, T1, (K1, T1, K2) three times; [(K1, T1, K2) twice; K1, T1] twice; K2.
R4: As row 3.
R5: (K2, T1, K1) 12 times.
R6: As row 5.
R7: K1, T1, K2, (K1, T1, K3, T1) three times; K3, T1, K2, [(K1, T1, K2) twice; K1, T1] twice.
R8: As row 7.
R9: (T1, K3) 12 times.
R10: As row 9.
R11: (K3, T1) twice; K1, [(T1, K3) twice; T1, K1] twice; K2, T1, (K3, T1, K2) twice; K1, T1, K2.
R12: As row 11.
R13: (K2, T1, K1) 12 times.
R14: As row 13.
R15: K1, T1, K3, T1, K1, [(T1, K3) three times; T1, K1] twice; K1, (K3, T1) three times.
R16: As row 15.
R17: (T1, K3) 12 times.
R18: As row 17.
R19: K2, (K1, T1) twice; [(K3, T1) three times; K2] three times.
R20: As row 19.
R21: (K2, T1, K1) 12 times.
R22: As row 21.
R23: (K1, T1) twice; [(K3, T1) three times; K2] three times; K1, T1.
R24: As row 23.
R25: (T1, K3) 12 times.
R26: As row 25.
R27: K1, T1, K1, [(K2, T1, K1) three times; K2] three times; T1, K1, T1.
R28: As row 27.
R29: (K2, T1, K1) 12 times.
R30: As row 29.
R31: K1, [(K2, T1, K1) three times; K2] three times; (T1, K1) twice; K1.
R32: As row 31.
R33: (T1, K3) 12 times.
R34: As row 33.
R35: (K1, T1, K2) three times; K2, [(K1, T1, K2) three times; K1, T1] twice; K1, T1, K3, T1.
R36: As row 35.
R37: (K2, T1, K1) 12 times.
R38: As row 37.
R39: [(K3, T1) twice; K2] twice; [(K1, T1, K2) twice; K1, T1] twice; (K1, T1, K2) twice.
R40: As row 39.
R41: (T1, K3) 12 times.
R42: As row 41.
R43: K1, [(T1, K3) twice; T1, K1] twice; K2, T1, K2, (K1, T1, K3, T1) three times; K3, T1.
R44: As row 43.
R45: (K2, T1, K1) 12 times.
R46: As row 45.
R47: K3, [(T1, K3) twice; T1, K1] twice; (K2, T1, K1) three times; T1, (K1, T1, K2) three times.
R48: As row 47.

www.knittitude.com
Short Sweater
Standard Machine Knitting Pattern – Tuck

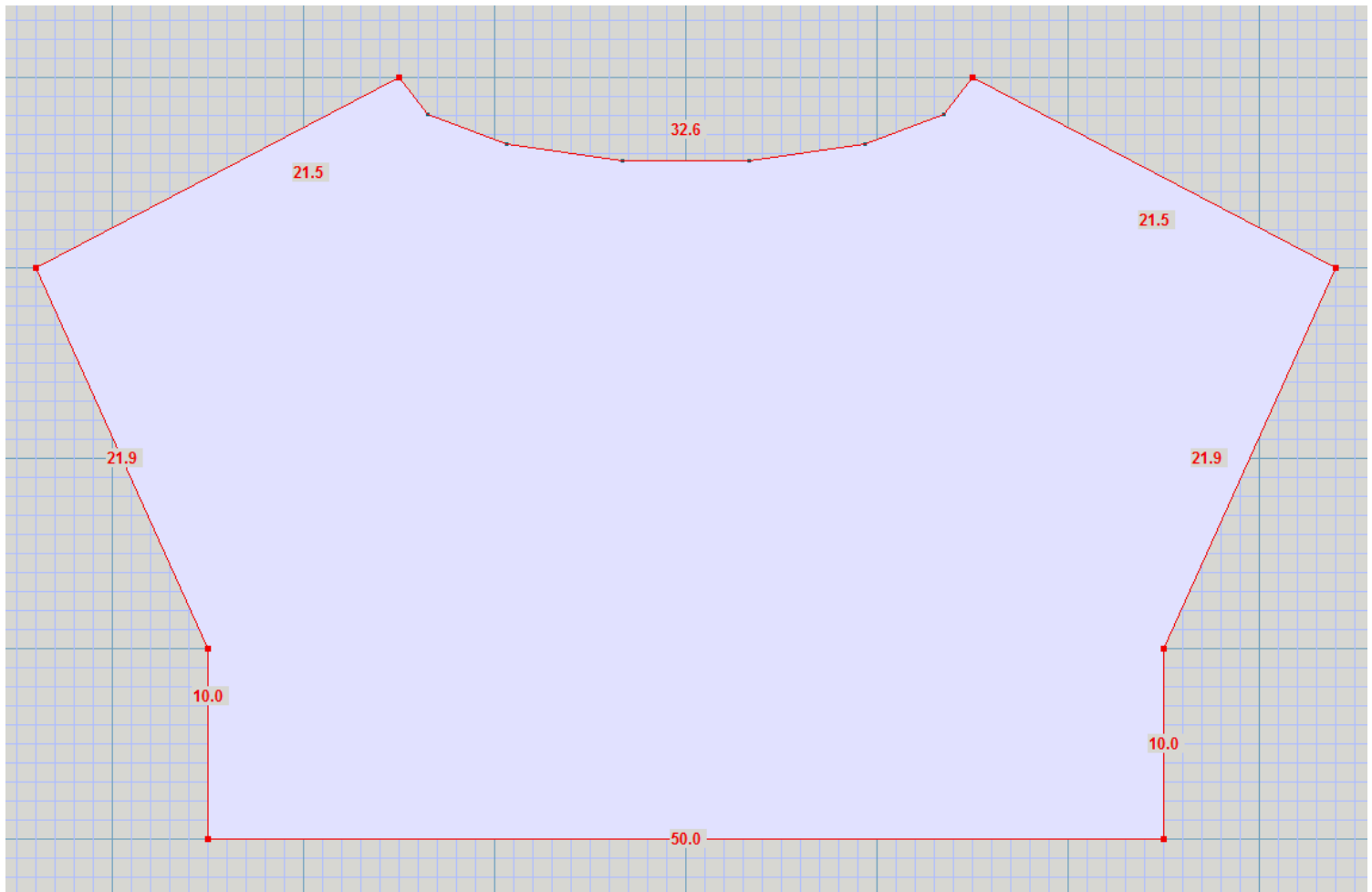
This pattern is available for S, M, L sizes.

Front and Back of the sweater are identical.

Set carriage at right. Set RC to 0.

Instructions for size S

The measurement values are in **centimeters**



Cast on 134 - LN67..RN67

R1: K134.

Rows 2-66: As row 1.

When knitting the next row: Inc 1 sts at left, Inc 1 sts at right.

R67: K136.

Set marker.

Rows 68-72: As row 67.

When knitting the next row: Inc 1 sts at left, Inc 1 sts at right.

R73: K138.

Rows 74-77: As row 73 (without the shaping).

When knitting the next row: Inc 1 sts at left, Inc 1 sts at right.

R78: K140.

Rows 79-83: As row 78 (without the shaping).

When knitting the next row: Inc 1 sts at left, Inc 1 sts at right.

R84: K142.

www.knittitude.com
Short Sweater
Standard Machine Knitting Pattern – Tuck

Rows 85-88: As row 84 (without the shaping).
When knitting the next row: Inc 1 sts at left, Inc 1 sts at right.
R89: K144.

Rows 90-94: As row 89 (without the shaping).
When knitting the next row: Inc 1 sts at left, Inc 1 sts at right.
R95: K146.

Rows 96-100: As row 95 (without the shaping).
When knitting the next row: Inc 1 sts at left, Inc 1 sts at right.
R101: K148.

Rows 102-105: As row 101 (without the shaping).
When knitting the next row: Inc 1 sts at left, Inc 1 sts at right.
R106: K150.

Rows 107-111: As row 106 (without the shaping).
When knitting the next row: Inc 1 sts at left, Inc 1 sts at right.
R112: K152.

Rows 113-116: As row 112 (without the shaping).
When knitting the next row: Inc 1 sts at left, Inc 1 sts at right.
R117: K154.

Rows 118-122: As row 117 (without the shaping).
When knitting the next row: Inc 1 sts at left, Inc 1 sts at right.
R123: K156.

Rows 124-127: As row 123 (without the shaping).
When knitting the next row: Inc 1 sts at left, Inc 1 sts at right.
R128: K158.

Rows 129-133: As row 128 (without the shaping).
When knitting the next row: Inc 1 sts at left, Inc 1 sts at right.
R134: K160.

Rows 135-139: As row 134 (without the shaping).
When knitting the next row: Inc 1 sts at left, Inc 1 sts at right.
R140: K162.

Rows 141-144: As row 140 (without the shaping).
When knitting the next row: Inc 1 sts at left, Inc 1 sts at right.
R145: K164.

Rows 146-150: As row 145 (without the shaping).
When knitting the next row: Inc 1 sts at left, Inc 1 sts at right.
R151: K166.

Rows 152-155: As row 151 (without the shaping).
When knitting the next row: Inc 1 sts at left, Inc 1 sts at right.
R156: K168.

Rows 157-161: As row 156 (without the shaping).
When knitting the next row: Inc 1 sts at left, Inc 1 sts at right.
R162: K170.

Rows 163-167: As row 162 (without the shaping).
When knitting the next row: Inc 1 sts at left, Inc 1 sts at right.
R168: K172.

Rows 169-172: As row 168 (without the shaping).
When knitting the next row: Inc 1 sts at left, Inc 1 sts at right.
R173: K174.

Rows 174-178: As row 173 (without the shaping).
When knitting the next row: Inc 1 sts at left, Inc 1 sts at right.
R179: K176.

Rows 180-183: As row 179 (without the shaping).
When knitting the next row: Inc 1 sts at left, Inc 1 sts at right.
R184: K178.

Rows 185-189: As row 184 (without the shaping).
When knitting the next row: Inc 1 sts at left, Inc 1 sts at right.
R190: K180.

Rows 191-194: As row 190 (without the shaping).
When knitting the next row: Inc 1 sts at left, Inc 1 sts at right.
R195: K182.

Rows 196-200: As row 195 (without the shaping).
Set marker.

When knitting the next row: Dec 1 sts at left, Dec 1 sts at right.
R201: K180.

When knitting the next row: Dec 1 sts at left, Dec 1 sts at right.

www.knittitude.com
Short Sweater
Standard Machine Knitting Pattern – Tuck

R202: K178.
R203: As row 202 (without the shaping).
When knitting the next row: Dec 1 sts at left, Dec 1 sts at right.
R204: K176.
When knitting the next row: Dec 1 sts at left, Dec 1 sts at right.
R205: K174.
When knitting the next row: Dec 1 sts at left, Dec 1 sts at right.
R206: K172.
R207: As row 206 (without the shaping).
When knitting the next row: Dec 1 sts at left, Dec 1 sts at right.
R208: K170.
When knitting the next row: Dec 1 sts at left, Dec 1 sts at right.
R209: K168.
When knitting the next row: Dec 1 sts at left, Dec 1 sts at right.
R210: K166.
R211: As row 210 (without the shaping).
When knitting the next row: Dec 1 sts at left, Dec 1 sts at right.
R212: K164.
When knitting the next row: Dec 1 sts at left, Dec 1 sts at right.
R213: K162.
When knitting the next row: Dec 1 sts at left, Dec 1 sts at right.
R214: K160.
R215: As row 214 (without the shaping).
When knitting the next row: Dec 1 sts at left, Dec 1 sts at right.
R216: K158.
When knitting the next row: Dec 1 sts at left, Dec 1 sts at right.
R217: K156.
When knitting the next row: Dec 1 sts at left, Dec 1 sts at right.
R218: K154.
When knitting the next row: Dec 1 sts at left, Dec 1 sts at right.
R219: K152.
R220: As row 219 (without the shaping).
When knitting the next row: Dec 1 sts at left, Dec 1 sts at right.
R221: K150.
When knitting the next row: Dec 1 sts at left, Dec 1 sts at right.
R222: K148.
When knitting the next row: Dec 1 sts at left, Dec 1 sts at right.
R223: K146.
R224: As row 223 (without the shaping).
When knitting the next row: Dec 1 sts at left, Dec 1 sts at right.
R225: K144.
When knitting the next row: Dec 1 sts at left, Dec 1 sts at right.
R226: K142.
When knitting the next row: Dec 1 sts at left, Dec 1 sts at right.
R227: K140.
R228: As row 227 (without the shaping).
When knitting the next row: Dec 1 sts at left, Dec 1 sts at right.
R229: K138.
When knitting the next row: Dec 1 sts at left, Dec 1 sts at right.
R230: K136.
When knitting the next row: Dec 1 sts at left, Dec 1 sts at right.
R231: K134.
R232: As row 231 (without the shaping).
When knitting the next row: Dec 1 sts at left, Dec 1 sts at right.
R233: K132.
When knitting the next row: Dec 1 sts at left, Dec 1 sts at right.
R234: K130.
When knitting the next row: Dec 1 sts at left, Dec 1 sts at right.
R235: K128.
R236: As row 235 (without the shaping).
When knitting the next row: Dec 1 sts at left, Dec 1 sts at right.
R237: K126.
When knitting the next row: Dec 1 sts at left, Hold LN8..RN62, Dec 1 sts at right.
R238: K54.
When knitting the next row: Dec 1 sts at left, Dec 1 sts at right.

www.knittitude.com
Short Sweater
Standard Machine Knitting Pattern – Tuck

R239: K52.
When knitting the next row: Dec 5 sts at right.
R240: K47.
When knitting the next row: Dec 1 sts at left, Dec 1 sts at right.
R241: K45.
When knitting the next row: Dec 1 sts at left, Dec 4 sts at right.
R242: K40.
When knitting the next row: Dec 1 sts at left, Dec 1 sts at right.
R243: K38.
When knitting the next row: Dec 4 sts at right.
R244: K34.
When knitting the next row: Dec 1 sts at left, Dec 1 sts at right.
R245: K32.
When knitting the next row: Dec 1 sts at left, Dec 2 sts at right.
R246: K29.
When knitting the next row: Dec 1 sts at left, Dec 1 sts at right.
R247: K27.
When knitting the next row: Dec 1 sts at right.
R248: K26.
When knitting the next row: Dec 1 sts at left, Dec 1 sts at right.
R249: K24.
When knitting the next row: Dec 1 sts at left, Dec 1 sts at right.
R250: K22.
When knitting the next row: Dec 1 sts at left, Dec 1 sts at right.
R251: K20.
When knitting the next row: Dec 1 sts at left, Dec 1 sts at right.
R252: K18.
When knitting the next row: Dec 1 sts at right.
R253: K17.
When knitting the next row: Dec 1 sts at left, Dec 2 sts at right.
R254: K14.
When knitting the next row: Dec 1 sts at left.
R255: K13.
When knitting the next row: Dec 1 sts at left, Dec 1 sts at right.
R256: K11.
R257: As row 256 (without the shaping).
When knitting the next row: Dec 1 sts at left, Dec 1 sts at right.
R258: K9.
When knitting the next row: Dec 1 sts at left.
R259: K8.
When knitting the next row: Dec 1 sts at left.
R260: K7.
When knitting the next row: Dec 1 sts at right.
R261: K6.
When knitting the next row: Dec 1 sts at left.
R262: K5.
When knitting the next row: Dec 1 sts at left.
R263: K4.
When knitting the next row: Dec 1 sts at left, Dec 1 sts at right.
R264: K2.
R265: As row 264 (without the shaping).
When knitting the next row: Dec 1 sts at left.
R266: K1.
Cast off remainder. Then select Ready.
----- New section -----
Pick up 53
R238: K53.
When knitting the next row: Dec 5 sts at left, Dec 1 sts at right.
R239: K47.
When knitting the next row: Dec 1 sts at left.
R240: K46.
When knitting the next row: Dec 4 sts at left, Dec 1 sts at right.
R241: K41.
When knitting the next row: Dec 1 sts at left, Dec 1 sts at right.
R242: K39.

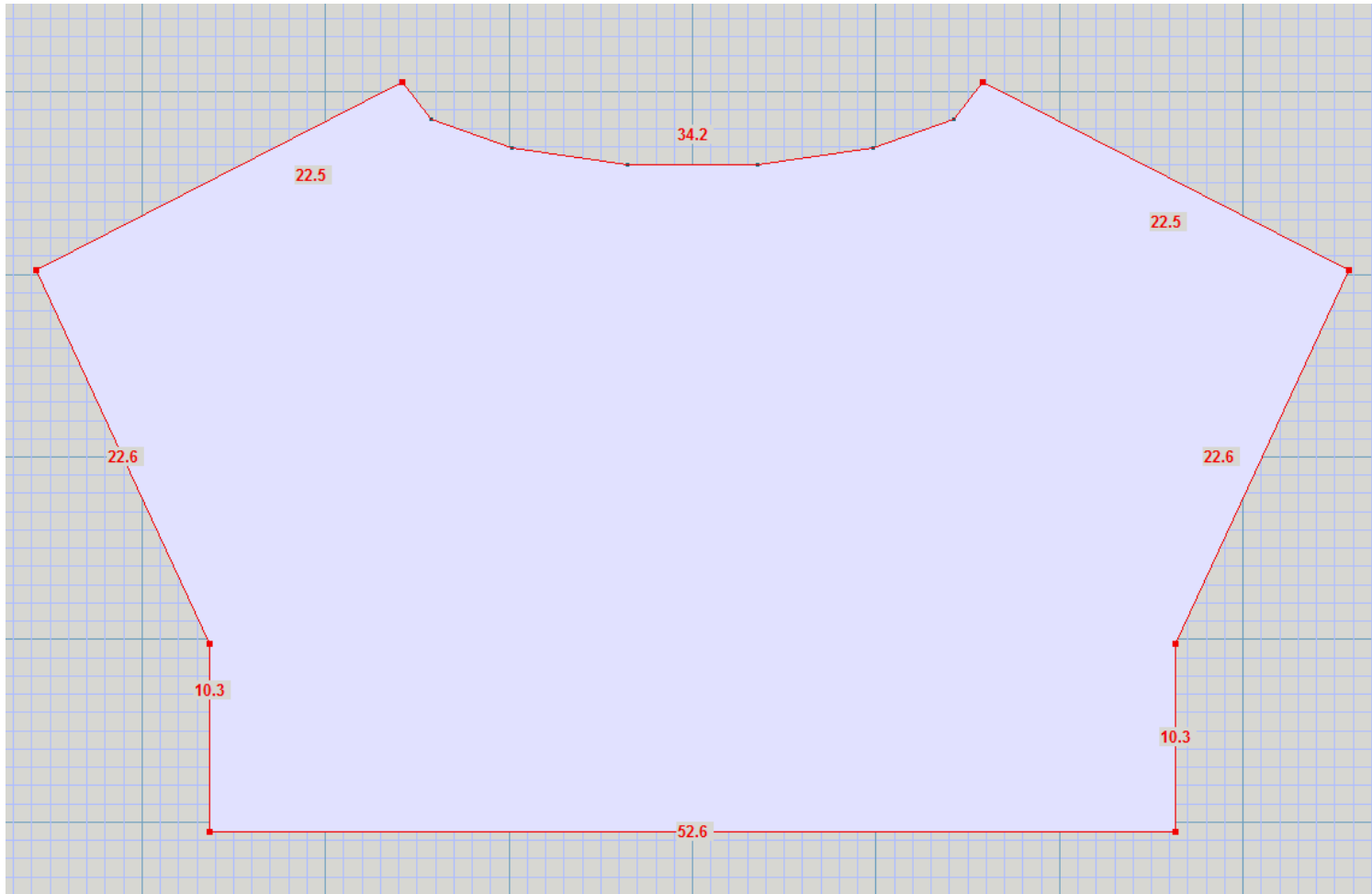
www.knittitude.com
Short Sweater
Standard Machine Knitting Pattern – Tuck

When knitting the next row: Dec 4 sts at left, Dec 1 sts at right.
R243: K34.
When knitting the next row: Dec 1 sts at left.
R244: K33.
When knitting the next row: Dec 2 sts at left, Dec 1 sts at right.
R245: K30.
When knitting the next row: Dec 1 sts at left, Dec 1 sts at right.
R246: K28.
When knitting the next row: Dec 1 sts at left, Dec 1 sts at right.
R247: K26.
When knitting the next row: Dec 1 sts at left.
R248: K25.
When knitting the next row: Dec 1 sts at left, Dec 1 sts at right.
R249: K23.
When knitting the next row: Dec 1 sts at left, Dec 1 sts at right.
R250: K21.
When knitting the next row: Dec 1 sts at left, Dec 1 sts at right.
R251: K19.
When knitting the next row: Dec 1 sts at left, Dec 1 sts at right.
R252: K17.
When knitting the next row: Dec 1 sts at left.
R253: K16.
When knitting the next row: Dec 1 sts at left, Dec 1 sts at right.
R254: K14.
When knitting the next row: Dec 1 sts at right.
R255: K13.
When knitting the next row: Dec 1 sts at left, Dec 1 sts at right.
R256: K11.
R257: As row 256 (without the shaping).
When knitting the next row: Dec 1 sts at left, Dec 1 sts at right.
R258: K9.
When knitting the next row: Dec 1 sts at right.
R259: K8.
When knitting the next row: Dec 1 sts at right.
R260: K7.
When knitting the next row: Dec 1 sts at left.
R261: K6.
When knitting the next row: Dec 1 sts at right.
R262: K5.
When knitting the next row: Dec 1 sts at right.
R263: K4.
When knitting the next row: Dec 1 sts at left, Dec 1 sts at right.
R264: K2.
R265: As row 264 (without the shaping).
When knitting the next row: Dec 1 sts at right.
R266: K1.
Cast off remainder. End of piece.

www.knittitude.com
Short Sweater
Standard Machine Knitting Pattern – Tuck

Instructions for size M

The measurement values are in **centimeters**



Cast on 140 - LN70..RN70

R1: K140.

Rows 2-69: As row 1.

Set marker.

When knitting the next row: Inc 1 sts at left, Inc 1 sts at right.

R70: K142.

Rows 71-74: As row 70 (without the shaping).

When knitting the next row: Inc 1 sts at left, Inc 1 sts at right.

R75: K144.

Rows 76-80: As row 75 (without the shaping).

When knitting the next row: Inc 1 sts at left, Inc 1 sts at right.

R81: K146.

Rows 82-85: As row 81 (without the shaping).

When knitting the next row: Inc 1 sts at left, Inc 1 sts at right.

R86: K148.

Rows 87-91: As row 86 (without the shaping).

When knitting the next row: Inc 1 sts at left, Inc 1 sts at right.

R92: K150.

Rows 93-96: As row 92 (without the shaping).

When knitting the next row: Inc 1 sts at left, Inc 1 sts at right.

R97: K152.

www.knittitude.com
Short Sweater
Standard Machine Knitting Pattern – Tuck

Rows 98-102: As row 97 (without the shaping).
When knitting the next row: Inc 1 sts at left, Inc 1 sts at right.
R103: K154.

Rows 104-107: As row 103 (without the shaping).
When knitting the next row: Inc 1 sts at left, Inc 1 sts at right.
R108: K156.

Rows 109-113: As row 108 (without the shaping).
When knitting the next row: Inc 1 sts at left, Inc 1 sts at right.
R114: K158.

Rows 115-118: As row 114 (without the shaping).
When knitting the next row: Inc 1 sts at left, Inc 1 sts at right.
R119: K160.

Rows 120-123: As row 119 (without the shaping).
When knitting the next row: Inc 1 sts at left, Inc 1 sts at right.
R124: K162.

Rows 125-129: As row 124 (without the shaping).
When knitting the next row: Inc 1 sts at left, Inc 1 sts at right.
R130: K164.

Rows 131-134: As row 130 (without the shaping).
When knitting the next row: Inc 1 sts at left, Inc 1 sts at right.
R135: K166.

Rows 136-140: As row 135 (without the shaping).
When knitting the next row: Inc 1 sts at left, Inc 1 sts at right.
R141: K168.

Rows 142-145: As row 141 (without the shaping).
When knitting the next row: Inc 1 sts at left, Inc 1 sts at right.
R146: K170.

Rows 147-151: As row 146 (without the shaping).
When knitting the next row: Inc 1 sts at left, Inc 1 sts at right.
R152: K172.

Rows 153-156: As row 152 (without the shaping).
When knitting the next row: Inc 1 sts at left, Inc 1 sts at right.
R157: K174.

Rows 158-161: As row 157 (without the shaping).
When knitting the next row: Inc 1 sts at left, Inc 1 sts at right.
R162: K176.

Rows 163-167: As row 162 (without the shaping).
When knitting the next row: Inc 1 sts at left, Inc 1 sts at right.
R168: K178.

Rows 169-172: As row 168 (without the shaping).
When knitting the next row: Inc 1 sts at left, Inc 1 sts at right.
R173: K180.

Rows 174-178: As row 173 (without the shaping).
When knitting the next row: Inc 1 sts at left, Inc 1 sts at right.
R179: K182.

Rows 180-183: As row 179 (without the shaping).
When knitting the next row: Inc 1 sts at left, Inc 1 sts at right.
R184: K184.

Rows 185-189: As row 184 (without the shaping).
When knitting the next row: Inc 1 sts at left, Inc 1 sts at right.
R190: K186.

Rows 191-194: As row 190 (without the shaping).
When knitting the next row: Inc 1 sts at left, Inc 1 sts at right.
R195: K188.

Rows 196-200: As row 195 (without the shaping).
When knitting the next row: Inc 1 sts at left, Inc 1 sts at right.
R201: K190.

Rows 202-205: As row 201 (without the shaping).
When knitting the next row: Dec 1 sts at left, Dec 1 sts at right.

www.knittitude.com
Short Sweater
Standard Machine Knitting Pattern – Tuck

R206: K188.

Set marker.

When knitting the next row: Dec 1 sts at left, Dec 1 sts at right.

R207: K186.

R208: As row 207 (without the shaping).

When knitting the next row: Dec 1 sts at left, Dec 1 sts at right.

R209: K184.

When knitting the next row: Dec 1 sts at left, Dec 1 sts at right.

R210: K182.

When knitting the next row: Dec 1 sts at left, Dec 1 sts at right.

R211: K180.

R212: As row 211 (without the shaping).

When knitting the next row: Dec 1 sts at left, Dec 1 sts at right.

R213: K178.

When knitting the next row: Dec 1 sts at left, Dec 1 sts at right.

R214: K176.

When knitting the next row: Dec 1 sts at left, Dec 1 sts at right.

R215: K174.

R216: As row 215 (without the shaping).

When knitting the next row: Dec 1 sts at left, Dec 1 sts at right.

R217: K172.

When knitting the next row: Dec 1 sts at left, Dec 1 sts at right.

R218: K170.

When knitting the next row: Dec 1 sts at left, Dec 1 sts at right.

R219: K168.

R220: As row 219 (without the shaping).

When knitting the next row: Dec 1 sts at left, Dec 1 sts at right.

R221: K166.

When knitting the next row: Dec 1 sts at left, Dec 1 sts at right.

R222: K164.

When knitting the next row: Dec 1 sts at left, Dec 1 sts at right.

R223: K162.

R224: As row 223 (without the shaping).

When knitting the next row: Dec 1 sts at left, Dec 1 sts at right.

R225: K160.

When knitting the next row: Dec 1 sts at left, Dec 1 sts at right.

R226: K158.

When knitting the next row: Dec 1 sts at left, Dec 1 sts at right.

R227: K156.

R228: As row 227 (without the shaping).

When knitting the next row: Dec 1 sts at left, Dec 1 sts at right.

R229: K154.

When knitting the next row: Dec 1 sts at left, Dec 1 sts at right.

R230: K152.

When knitting the next row: Dec 1 sts at left, Dec 1 sts at right.

R231: K150.

R232: As row 231 (without the shaping).

When knitting the next row: Dec 1 sts at left, Dec 1 sts at right.

R233: K148.

When knitting the next row: Dec 1 sts at left, Dec 1 sts at right.

R234: K146.

When knitting the next row: Dec 1 sts at left, Dec 1 sts at right.

R235: K144.

R236: As row 235 (without the shaping).

When knitting the next row: Dec 1 sts at left, Dec 1 sts at right.

R237: K142.

When knitting the next row: Dec 1 sts at left, Dec 1 sts at right.

R238: K140.

When knitting the next row: Dec 1 sts at left, Dec 1 sts at right.

www.knittitude.com
Short Sweater
Standard Machine Knitting Pattern – Tuck

R239: K138.
When knitting the next row: Dec 1 sts at left, Dec 1 sts at right.
R240: K136.
R241: As row 240 (without the shaping).
When knitting the next row: Dec 1 sts at left, Dec 1 sts at right.
R242: K134.
When knitting the next row: Dec 1 sts at left, Dec 1 sts at right.
R243: K132.
When knitting the next row: Dec 1 sts at left, Dec 1 sts at right.
R244: K130.
When knitting the next row: Hold LN65..RN9.
R245: K56.
When knitting the next row: Dec 1 sts at right.
R246: K55.
When knitting the next row: Dec 5 sts at left, Dec 1 sts at right.
R247: K49.
When knitting the next row: Dec 1 sts at left, Dec 1 sts at right.
R248: K47.
When knitting the next row: Dec 5 sts at left.
R249: K42.
When knitting the next row: Dec 1 sts at left, Dec 1 sts at right.
R250: K40.
When knitting the next row: Dec 4 sts at left, Dec 1 sts at right.
R251: K35.
When knitting the next row: Dec 1 sts at left, Dec 1 sts at right.
R252: K33.
When knitting the next row: Dec 2 sts at left.
R253: K31.
When knitting the next row: Dec 1 sts at left, Dec 1 sts at right.
R254: K29.
When knitting the next row: Dec 2 sts at left, Dec 1 sts at right.
R255: K26.
When knitting the next row: Dec 1 sts at left, Dec 1 sts at right.
R256: K24.
When knitting the next row: Dec 1 sts at left.
R257: K23.
When knitting the next row: Dec 1 sts at left, Dec 1 sts at right.
R258: K21.
When knitting the next row: Dec 1 sts at left, Dec 1 sts at right.
R259: K19.
When knitting the next row: Dec 1 sts at left, Dec 1 sts at right.
R260: K17.
When knitting the next row: Dec 2 sts at left.
R261: K15.
When knitting the next row: Dec 1 sts at right.
R262: K14.
When knitting the next row: Dec 1 sts at left, Dec 1 sts at right.
R263: K12.
When knitting the next row: Dec 1 sts at right.
R264: K11.
R265: As row 264 (without the shaping).
When knitting the next row: Dec 1 sts at left, Dec 1 sts at right.
R266: K9.
When knitting the next row: Dec 1 sts at right.
R267: K8.
When knitting the next row: Dec 1 sts at right.
R268: K7.
When knitting the next row: Dec 1 sts at left.
R269: K6.

www.knittitude.com
Short Sweater
Standard Machine Knitting Pattern – Tuck

When knitting the next row: Dec 1 sts at right.

R270: K5.

When knitting the next row: Dec 1 sts at right.

R271: K4.

When knitting the next row: Dec 1 sts at left, Dec 1 sts at right.

R272: K2.

R273: As row 272 (without the shaping).

When knitting the next row: Dec 1 sts at right.

R274: K1.

Set marker.

Cast off remainder. Then select Ready.

----- New section -----

Pick up 56

R245: K56.

When knitting the next row: Dec 1 sts at left, Dec 5 sts at right.

R246: K50.

When knitting the next row: Dec 1 sts at left, Dec 1 sts at right.

R247: K48.

When knitting the next row: Dec 1 sts at left, Dec 5 sts at right.

R248: K42.

When knitting the next row: Dec 1 sts at right.

R249: K41.

When knitting the next row: Dec 1 sts at left, Dec 4 sts at right.

R250: K36.

When knitting the next row: Dec 1 sts at left, Dec 1 sts at right.

R251: K34.

When knitting the next row: Dec 1 sts at left, Dec 2 sts at right.

R252: K31.

When knitting the next row: Dec 1 sts at right.

R253: K30.

When knitting the next row: Dec 1 sts at left, Dec 2 sts at right.

R254: K27.

When knitting the next row: Dec 1 sts at left, Dec 1 sts at right.

R255: K25.

When knitting the next row: Dec 1 sts at left, Dec 1 sts at right.

R256: K23.

When knitting the next row: Dec 1 sts at right.

R257: K22.

When knitting the next row: Dec 1 sts at left, Dec 1 sts at right.

R258: K20.

When knitting the next row: Dec 1 sts at left, Dec 1 sts at right.

R259: K18.

When knitting the next row: Dec 1 sts at left, Dec 1 sts at right.

R260: K16.

When knitting the next row: Dec 1 sts at right.

R261: K15.

When knitting the next row: Dec 1 sts at left.

R262: K14.

When knitting the next row: Dec 1 sts at left, Dec 1 sts at right.

R263: K12.

When knitting the next row: Dec 1 sts at left.

R264: K11.

R265: As row 264 (without the shaping).

When knitting the next row: Dec 1 sts at left, Dec 1 sts at right.

R266: K9.

When knitting the next row: Dec 1 sts at left.

R267: K8.

When knitting the next row: Dec 1 sts at left.

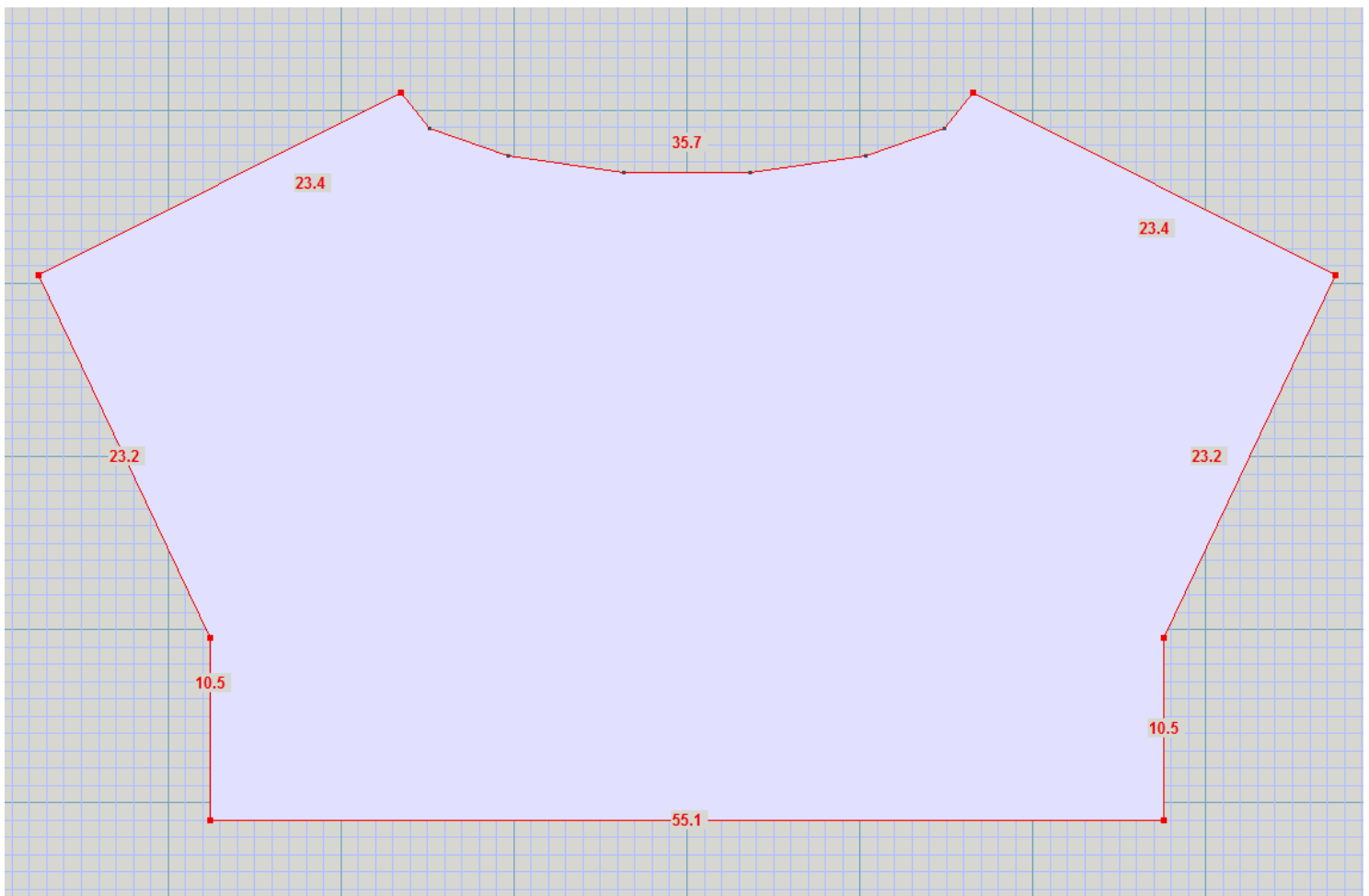
R268: K7.

www.knittitude.com
Short Sweater
Standard Machine Knitting Pattern – Tuck

When knitting the next row: Dec 1 sts at right.
R269: K6.
When knitting the next row: Dec 1 sts at left.
R270: K5.
When knitting the next row: Dec 1 sts at left.
R271: K4.
When knitting the next row: Dec 1 sts at left, Dec 1 sts at right.
R272: K2.
R273: As row 272 (without the shaping).
When knitting the next row: Dec 1 sts at left.
R274: K1.
Set marker.
Cast off remainder. End of piece.

Instructions for size L

The measurement values are in **centimeters**



Cast on 148 - LN74..RN74
R1: K148.
Rows 2-70: As row 1.
When knitting the next row: Inc 1 sts at left, Inc 1 sts at right.

www.knittitude.com
Short Sweater
Standard Machine Knitting Pattern – Tuck

R71: K150.

Set marker.

Rows 72-75: As row 71.

When knitting the next row: Inc 1 sts at left, Inc 1 sts at right.

R76: K152.

Rows 77-81: As row 76 (without the shaping).

When knitting the next row: Inc 1 sts at left, Inc 1 sts at right.

R82: K154.

Rows 83-86: As row 82 (without the shaping).

When knitting the next row: Inc 1 sts at left, Inc 1 sts at right.

R87: K156.

Rows 88-92: As row 87 (without the shaping).

When knitting the next row: Inc 1 sts at left, Inc 1 sts at right.

R93: K158.

Rows 94-97: As row 93 (without the shaping).

When knitting the next row: Inc 1 sts at left, Inc 1 sts at right.

R98: K160.

Rows 99-102: As row 98 (without the shaping).

When knitting the next row: Inc 1 sts at left, Inc 1 sts at right.

R103: K162.

Rows 104-108: As row 103 (without the shaping).

When knitting the next row: Inc 1 sts at left, Inc 1 sts at right.

R109: K164.

Rows 110-113: As row 109 (without the shaping).

When knitting the next row: Inc 1 sts at left, Inc 1 sts at right.

R114: K166.

Rows 115-118: As row 114 (without the shaping).

When knitting the next row: Inc 1 sts at left, Inc 1 sts at right.

R119: K168.

Rows 120-124: As row 119 (without the shaping).

When knitting the next row: Inc 1 sts at left, Inc 1 sts at right.

R125: K170.

Rows 126-129: As row 125 (without the shaping).

When knitting the next row: Inc 1 sts at left, Inc 1 sts at right.

R130: K172.

Rows 131-135: As row 130 (without the shaping).

When knitting the next row: Inc 1 sts at left, Inc 1 sts at right.

R136: K174.

Rows 137-140: As row 136 (without the shaping).

When knitting the next row: Inc 1 sts at left, Inc 1 sts at right.

R141: K176.

Rows 142-145: As row 141 (without the shaping).

When knitting the next row: Inc 1 sts at left, Inc 1 sts at right.

R146: K178.

Rows 147-151: As row 146 (without the shaping).

When knitting the next row: Inc 1 sts at left, Inc 1 sts at right.

R152: K180.

Rows 153-156: As row 152 (without the shaping).

When knitting the next row: Inc 1 sts at left, Inc 1 sts at right.

R157: K182.

Rows 158-162: As row 157 (without the shaping).

When knitting the next row: Inc 1 sts at left, Inc 1 sts at right.

R163: K184.

Rows 164-167: As row 163 (without the shaping).

When knitting the next row: Inc 1 sts at left, Inc 1 sts at right.

R168: K186.

Rows 169-172: As row 168 (without the shaping).

When knitting the next row: Inc 1 sts at left, Inc 1 sts at right.

R173: K188.

www.knittitude.com
Short Sweater
Standard Machine Knitting Pattern – Tuck

Rows 174-178: As row 173 (without the shaping).
When knitting the next row: Inc 1 sts at left, Inc 1 sts at right.
R179: K190.

Rows 180-183: As row 179 (without the shaping).
When knitting the next row: Inc 1 sts at left, Inc 1 sts at right.
R184: K192.

Rows 185-188: As row 184 (without the shaping).
When knitting the next row: Inc 1 sts at left, Inc 1 sts at right.
R189: K194.

Rows 190-194: As row 189 (without the shaping).
When knitting the next row: Inc 1 sts at left, Inc 1 sts at right.
R195: K196.

Rows 196-199: As row 195 (without the shaping).
When knitting the next row: Inc 1 sts at left, Inc 1 sts at right.
R200: K198.

Rows 201-205: As row 200 (without the shaping).
When knitting the next row: Inc 1 sts at left, Inc 1 sts at right.
R206: K200.

Rows 207-210: As row 206 (without the shaping).
When knitting the next row: Dec 1 sts at left, Dec 1 sts at right.
R211: K198.

Set marker.
When knitting the next row: Dec 1 sts at left, Dec 1 sts at right.
R212: K196.

R213: As row 212 (without the shaping).
When knitting the next row: Dec 1 sts at left, Dec 1 sts at right.
R214: K194.

When knitting the next row: Dec 1 sts at left, Dec 1 sts at right.
R215: K192.

When knitting the next row: Dec 1 sts at left, Dec 1 sts at right.
R216: K190.

When knitting the next row: Dec 1 sts at left, Dec 1 sts at right.
R217: K188.

R218: As row 217 (without the shaping).
When knitting the next row: Dec 1 sts at left, Dec 1 sts at right.
R219: K186.

When knitting the next row: Dec 1 sts at left, Dec 1 sts at right.
R220: K184.

When knitting the next row: Dec 1 sts at left, Dec 1 sts at right.
R221: K182.

When knitting the next row: Dec 1 sts at left, Dec 1 sts at right.
R222: K180.

R223: As row 222 (without the shaping).
When knitting the next row: Dec 1 sts at left, Dec 1 sts at right.
R224: K178.

When knitting the next row: Dec 1 sts at left, Dec 1 sts at right.
R225: K176.

When knitting the next row: Dec 1 sts at left, Dec 1 sts at right.
R226: K174.

R227: As row 226 (without the shaping).
When knitting the next row: Dec 1 sts at left, Dec 1 sts at right.
R228: K172.

When knitting the next row: Dec 1 sts at left, Dec 1 sts at right.
R229: K170.

When knitting the next row: Dec 1 sts at left, Dec 1 sts at right.
R230: K168.

When knitting the next row: Dec 1 sts at left, Dec 1 sts at right.
R231: K166.

R232: As row 231 (without the shaping).

www.knittitude.com
Short Sweater
Standard Machine Knitting Pattern – Tuck

When knitting the next row: Dec 1 sts at left, Dec 1 sts at right.
R233: K164.
When knitting the next row: Dec 1 sts at left, Dec 1 sts at right.
R234: K162.
When knitting the next row: Dec 1 sts at left, Dec 1 sts at right.
R235: K160.
When knitting the next row: Dec 1 sts at left, Dec 1 sts at right.
R236: K158.
R237: As row 236 (without the shaping).
When knitting the next row: Dec 1 sts at left, Dec 1 sts at right.
R238: K156.
When knitting the next row: Dec 1 sts at left, Dec 1 sts at right.
R239: K154.
When knitting the next row: Dec 1 sts at left, Dec 1 sts at right.
R240: K152.
R241: As row 240 (without the shaping).
When knitting the next row: Dec 1 sts at left, Dec 1 sts at right.
R242: K150.
When knitting the next row: Dec 1 sts at left, Dec 1 sts at right.
R243: K148.
When knitting the next row: Dec 1 sts at left, Dec 1 sts at right.
R244: K146.
When knitting the next row: Dec 1 sts at left, Dec 1 sts at right.
R245: K144.
R246: As row 245 (without the shaping).
When knitting the next row: Dec 1 sts at left, Dec 1 sts at right.
R247: K142.
When knitting the next row: Dec 1 sts at left, Dec 1 sts at right.
R248: K140.
When knitting the next row: Dec 1 sts at left, Dec 1 sts at right.
R249: K138.
When knitting the next row: Dec 1 sts at left, Dec 1 sts at right.
R250: K136.
When knitting the next row: Hold LN68..RN10.
R251: K58.
When knitting the next row: Dec 1 sts at right.
R252: K57.
When knitting the next row: Dec 5 sts at left, Dec 1 sts at right.
R253: K51.
When knitting the next row: Dec 1 sts at left, Dec 1 sts at right.
R254: K49.
When knitting the next row: Dec 5 sts at left.
R255: K44.
When knitting the next row: Dec 1 sts at left, Dec 1 sts at right.
R256: K42.
When knitting the next row: Dec 5 sts at left, Dec 1 sts at right.
R257: K36.
When knitting the next row: Dec 1 sts at left, Dec 1 sts at right.
R258: K34.
When knitting the next row: Dec 2 sts at left, Dec 1 sts at right.
R259: K31.
When knitting the next row: Dec 1 sts at left.
R260: K30.
When knitting the next row: Dec 2 sts at left, Dec 1 sts at right.
R261: K27.
When knitting the next row: Dec 1 sts at left, Dec 1 sts at right.
R262: K25.
When knitting the next row: Dec 1 sts at left, Dec 1 sts at right.
R263: K23.

www.knittitude.com
Short Sweater
Standard Machine Knitting Pattern – Tuck

When knitting the next row: Dec 1 sts at left, Dec 1 sts at right.
R264: K21.

When knitting the next row: Dec 1 sts at left.
R265: K20.

When knitting the next row: Dec 1 sts at left, Dec 1 sts at right.
R266: K18.

When knitting the next row: Dec 2 sts at left, Dec 1 sts at right.
R267: K15.

When knitting the next row: Dec 1 sts at right.
R268: K14.

When knitting the next row: Dec 1 sts at left.
R269: K13.

When knitting the next row: Dec 1 sts at right.
R270: K12.

When knitting the next row: Dec 1 sts at right.
R271: K11.

When knitting the next row: Dec 1 sts at left, Dec 1 sts at right.
R272: K9.

When knitting the next row: Dec 1 sts at right.
R273: K8.

R274: As row 273 (without the shaping).

When knitting the next row: Dec 1 sts at left, Dec 1 sts at right.
R275: K6.

When knitting the next row: Dec 1 sts at right.
R276: K5.

When knitting the next row: Dec 1 sts at right.
R277: K4.

When knitting the next row: Dec 1 sts at left, Dec 1 sts at right.
R278: K2.

R279: As row 278 (without the shaping).

When knitting the next row: Dec 1 sts at right.
R280: K1.

Set marker.

Cast off remainder. Then select Ready.

----- New section -----

Pick up 58

R251: K58.

When knitting the next row: Dec 1 sts at left, Dec 5 sts at right.
R252: K52.

When knitting the next row: Dec 1 sts at left, Dec 1 sts at right.
R253: K50.

When knitting the next row: Dec 1 sts at left, Dec 5 sts at right.
R254: K44.

When knitting the next row: Dec 1 sts at right.
R255: K43.

When knitting the next row: Dec 1 sts at left, Dec 5 sts at right.
R256: K37.

When knitting the next row: Dec 1 sts at left, Dec 1 sts at right.
R257: K35.

When knitting the next row: Dec 1 sts at left, Dec 2 sts at right.
R258: K32.

When knitting the next row: Dec 1 sts at left, Dec 1 sts at right.
R259: K30.

When knitting the next row: Dec 2 sts at right.
R260: K28.

When knitting the next row: Dec 1 sts at left, Dec 1 sts at right.
R261: K26.

When knitting the next row: Dec 1 sts at left, Dec 1 sts at right.
R262: K24.

www.knittitude.com
Short Sweater
Standard Machine Knitting Pattern – Tuck

When knitting the next row: Dec 1 sts at left, Dec 1 sts at right.
R263: K22.
When knitting the next row: Dec 1 sts at left, Dec 1 sts at right.
R264: K20.
When knitting the next row: Dec 1 sts at right.
R265: K19.
When knitting the next row: Dec 1 sts at left, Dec 1 sts at right.
R266: K17.
When knitting the next row: Dec 1 sts at left, Dec 1 sts at right.
R267: K15.
When knitting the next row: Dec 1 sts at left.
R268: K14.
When knitting the next row: Dec 1 sts at right.
R269: K13.
When knitting the next row: Dec 1 sts at left.
R270: K12.
When knitting the next row: Dec 1 sts at left.
R271: K11.
When knitting the next row: Dec 1 sts at left, Dec 1 sts at right.
R272: K9.
When knitting the next row: Dec 1 sts at left.
R273: K8.
R274: As row 273 (without the shaping).
When knitting the next row: Dec 1 sts at left, Dec 1 sts at right.
R275: K6.
When knitting the next row: Dec 1 sts at left.
R276: K5.
When knitting the next row: Dec 1 sts at left.
R277: K4.
When knitting the next row: Dec 1 sts at left, Dec 1 sts at right.
R278: K2.
R279: As row 278 (without the shaping).
When knitting the next row: Dec 1 sts at left.
R280: K1.
Set marker.
Cast off remainder. End of piece.