

www.knittitude.com

**Sleeveless Green Three-Quarter-Length Dress
Standard Machine Knitting Pattern - Tuck Rib**



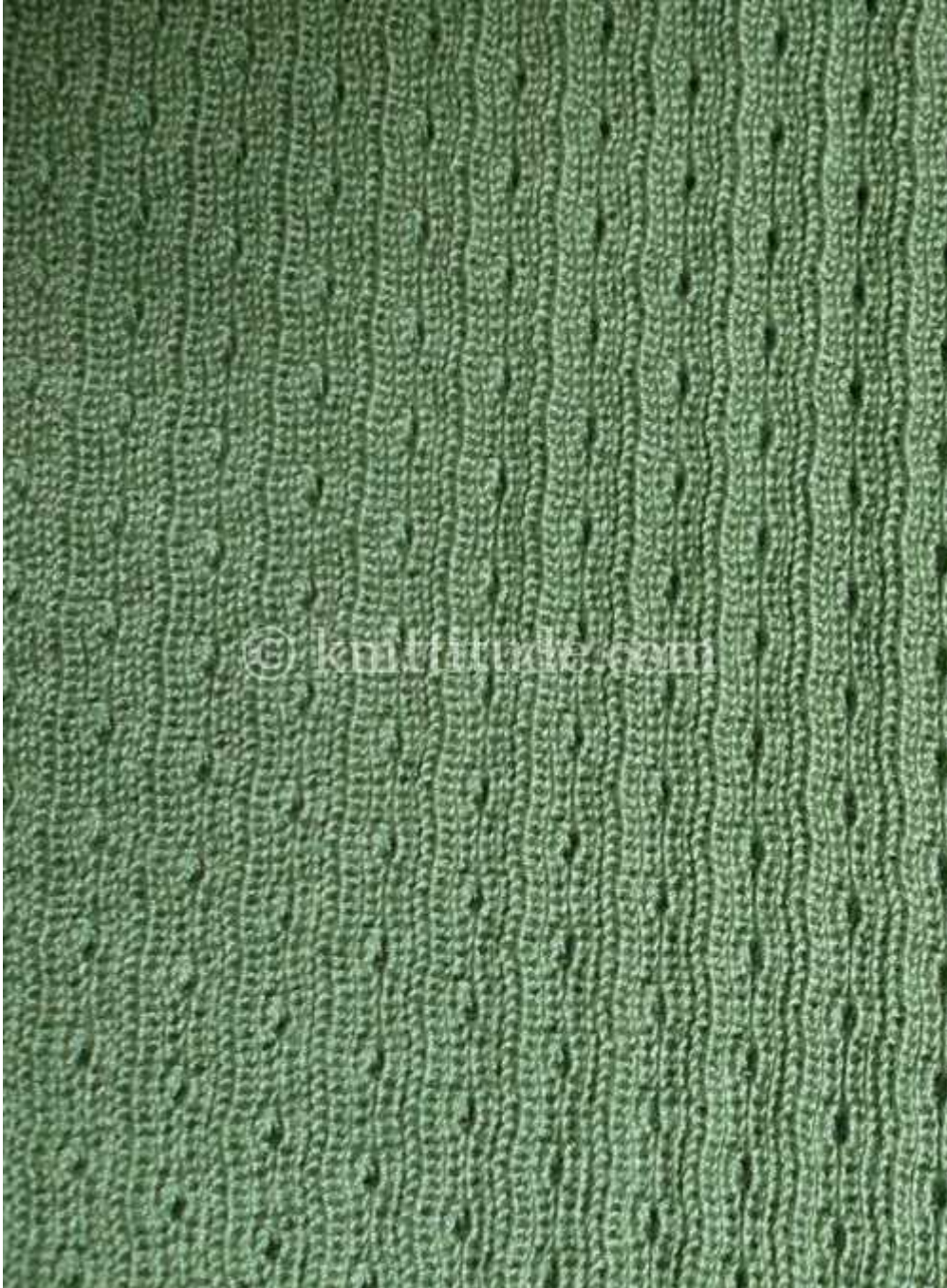
www.knittitude.com

**Sleeveless Green Three-Quarter-Length Dress
Standard Machine Knitting Pattern - Tuck Rib**



www.knittitude.com

**Sleeveless Green Three-Quarter-Length Dress
Standard Machine Knitting Pattern - Tuck Rib**



For this pattern I used my [Silver Reed SK840](#) standard electronic knitting machine with ribber

Sleeveless Green Three-Quarter-Length Dress Standard Machine Knitting Pattern - Tuck Rib

Pattern Summary

Gauge Swatch

- 33.90 Stitches & 57.14 Rows per 10 cm (3.9 in)
Or
- Width of 40 stitches ~ 11.80 cm (4.6 in); height of 60 stitches ~ 10.50 cm (4.1 in)

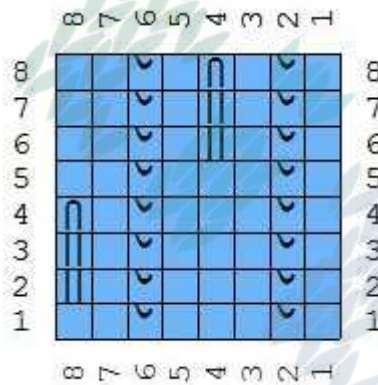
Tension dial - Tension 7, Stitch Dial 2 (for both main bed and ribber)

I used 2 strands of very thin (2 play) green combed cotton yarn Nm 2/16.

This dress I made for myself, it is for **Size S**.

Garment Symbols

This is the Tuck Rib pattern. This pattern is repeated horizontally (except for the last 2 columns both on left and right side, better when decreasing) and vertically (except for the last two upper stitches in the columns – again better when decreasing).



Symbol	Abbreviation
(blank)	K
v	NWP
	T
U	T
Abbreviation	Knitting instruction
K	Knit.
NWP	Needle in Non-Working Position.
T	Tuck.

The pattern is only for the main bed. On the ribber there are always worked all the needles. On the main bed, you must arrange the needles so they comply to the pattern. Where you see NWP, you must transfer the stitch from the main bed to the corresponding needle on the ribber.

www.knittitude.com
Sleeveless Green Three-Quarter-Length Dress
Standard Machine Knitting Pattern - Tuck Rib

Garment Tutorial

The ribber's Half-Pitch Lever must be set to H 5.

On both main bed and ribber, set the stitch dial to 2. With the carriage at right, do a full needle rib cast-on LN60..RN60 for tighter edge (Broken Toe Cast On).

Here is a video tutorial for how to do a Broken Toe Cast On:

<http://www.youtube.com/watch?v=zSzparWeh8M>

Have in mind that we are doing a full needle cast on (every needle between LN60-RN60 is in use) with Half-Pitch Lever set to H5 and stitch dial set to 2, but the steps are the same.

Here is a video tutorial for how to do a Full Needle Rib Cast On:

<http://www.youtube.com/watch?v=RLL9FvFP318>

What you have to do is to combine the Full Needle Rib cast on with the Broken Toe strategy.

So, by now you will have 6 knitted rows, ending with the carriage at right (1 plain knitting and broken toe strategy applied to it; 1 plain knitting; 3 circular knitting; 1 plain knitting = 6 rows).

Set RC to 0. The stitch dial remains at 2, for both main bed and ribber.

Legend:

- R – row
- LN – left needle
- RN – right needle

For example:

R1: K2, (NWP, K3) 29 times; K2.

Where you see NWP (non-working position) you transfer the stitch on the corresponding needle on the ribber. This must be done only for row 1, then, as you increase on sides, you must do it when the pattern requires it. Therefore for the row 1 you will have:

- the first 2 stitches knitted
- (1 transferred to the ribber, 3 knitted) repeat 29 times
- the last 2 stitches knitted.

Remember that the first and last 2 stitches in a row are not part of the pattern, they are always knitted, K2. This means that when you have 5 consecutive stitches on sides (due to increase), you do not yet transfer the corresponding needle to the ribber to comply to the pattern (the NWP needle), you wait for the next increase. When it's time to increase the 6th stitch on the side, you move corresponding stitch (that which should be NWP) to the ribber.

Have in mind that the pattern is always explained from left to right. Lets begin the pattern:

Sleeveless Green Three-Quarter-Length Dress Standard Machine Knitting Pattern - Tuck Rib

This part is the same for both Front & Back sides

Cast on 120

R1: K2, (NWP, K3) 29 times; K2.

R2: K2, NWP, K1, (T1, K1, NWP, K3, NWP, K1) 14 times; T1, K3.

Rows 3-4: As row 2.

R5: K2, (NWP, K3) 29 times; K2.

R6: K2, NWP, K1, (K2, NWP, K1, T1, K1, NWP, K1) 14 times; K4.

Rows 7-8: As row 6.

R9: K2, (NWP, K3) 29 times; K2.

R10: K2, NWP, K1, (T1, K1, NWP, K3, NWP, K1) 14 times; T1, K3.

Rows 11-12: As row 10.

R13: K2, (NWP, K3) 29 times; K2.

R14: K2, NWP, K1, (K2, NWP, K1, T1, K1, NWP, K1) 14 times; K4.

Rows 15-16: As row 14.

R17: K2, (NWP, K3) 29 times; K2.

R18: K2, NWP, K1, (T1, K1, NWP, K3, NWP, K1) 14 times; T1, K3.

R19: As row 18.

When knitting the next row: Inc 1 sts at left, Inc 1 sts at right.

R20: K1, (K2, NWP, K1, T1, K1, NWP, K1) 15 times; K1.

R21: K1, (K2, NWP, K1) 30 times; K1.

R22: K3, NWP, K1, (K2, NWP, K1, T1, K1, NWP, K1) 14 times; K2, NWP, K2.

Rows 23-24: As row 22.

R25: K1, (K2, NWP, K1) 30 times; K1.

R26: K1, (K2, NWP, K1, T1, K1, NWP, K1) 15 times; K1.

Rows 27-28: As row 26.

R29: K1, (K2, NWP, K1) 30 times; K1.

R30: K3, NWP, K1, (K2, NWP, K1, T1, K1, NWP, K1) 14 times; K2, NWP, K2.

Rows 31-32: As row 30.

R33: K1, (K2, NWP, K1) 30 times; K1.

R34: K1, (K2, NWP, K1, T1, K1, NWP, K1) 15 times; K1.

Rows 35-36: As row 34.

R37: K1, (K2, NWP, K1) 30 times; K1.

R38: K3, NWP, K1, (K2, NWP, K1, T1, K1, NWP, K1) 14 times; K2, NWP, K2.

When knitting the next row: Inc 1 sts at left, Inc 1 sts at right.

R39: K2, (T1, K1, NWP, K3, NWP, K1) 15 times; K2.

R40: As row 39.

R41: K2, (K2, NWP, K1) 30 times; K2.

R42: K2, (K2, NWP, K1, T1, K1, NWP, K1) 15 times; K2.

Rows 43-44: As row 42.

R45: K2, (K2, NWP, K1) 30 times; K2.

R46: K2, (T1, K1, NWP, K3, NWP, K1) 15 times; K2.

Rows 47-48: As row 46.

R49: K2, (K2, NWP, K1) 30 times; K2.

R50: K2, (K2, NWP, K1, T1, K1, NWP, K1) 15 times; K2.

Rows 51-52: As row 50.

R53: K2, (K2, NWP, K1) 30 TIMES; K2.

R54: K2, (T1, K1, NWP, K3, NWP, K1) 15 times; K2.

Rows 55-56: As row 54

When knitting the next row: Inc 1 sts at left, Inc 1 sts at right.

R57: K3, (K2, NWP, K1) 30 times; K3.

R58: K3, (K2, NWP, K1, T1, K1, NWP, K1) 15 times; K3.

Rows 59-60: As row 58.

R61: K3, (K2, NWP, K1) 30 times; K3.

R62: K3, (T1, K1, NWP, K3, NWP, K1) 15 times; T1, K2.

Rows 63-64: As row 62.

R65: K3, (K2, NWP, K1) 30 times; K3.

R66: K3, (K2, NWP, K1, T1, K1, NWP, K1) 15 times; K3.

Rows 67-68: As row 66.

R69: K3, (K2, NWP, K1) 30 times; K3.

Sleeveless Green Three-Quarter-Length Dress Standard Machine Knitting Pattern - Tuck Rib

R70: K3, (T1, K1, NWP, K3, NWP, K1) 15 times; T1, K2.
Rows 71-72: As row 70.
R73: K3, (K2, NWP, K1) 30 times; K3.
R74: K3, (K2, NWP, K1, T1, K1, NWP, K1) 15 times; K3.
R75: As row 74.
When knitting the next row: Inc 1 sts at left, Inc 1 sts at right.
R76: K2, NWP, K1, (K2, NWP, K1, T1, K1, NWP, K1) 15 times; K4.
R77: K2, (NWP, K3) 31 times; K2.
R78: K2, NWP, K1, (T1, K1, NWP, K3, NWP, K1) 15 times; T1, K3.
Rows 79-80: As row 78.
R81: K2, (NWP, K3) 31 times; K2.
R82: K2, NWP, K1, (K2, NWP, K1, T1, K1, NWP, K1) 15 times; K4.
Rows 83-84: As row 82.
R85: K2, (NWP, K3) 31 times; K2.
R86: K2, NWP, K1, (T1, K1, NWP, K3, NWP, K1) 15 times; T1, K3.
Rows 87-88: As row 86.
R89: K2, (NWP, K3) 31 times; K2.
R90: K2, NWP, K1, (K2, NWP, K1, T1, K1, NWP, K1) 15 times; K4.
Rows 91-92: As row 90.
R93: K2, (NWP, K3) 31 times; K2.
R94: K2, NWP, K1, (T1, K1, NWP, K3, NWP, K1) 15 times; T1, K3.
When knitting the next row: Inc 1 sts at left, Inc 1 sts at right.
R95: K1, (K2, NWP, K1, T1, K1, NWP, K1) 16 times; K1.
R96: As row 95.
R97: K1, (K2, NWP, K1) 32 times; K1.
R98: K3, NWP, K1, (K2, NWP, K1, T1, K1, NWP, K1) 15 times; K2, NWP, K2.
Rows 99-100: As row 98.
R101: K1, (K2, NWP, K1) 32 times; K1.
R102: K1, (K2, NWP, K1, T1, K1, NWP, K1) 16 times; K1.
Rows 103-104: As row 102.
R105: K1, (K2, NWP, K1) 32 times; K1.
R106: K3, NWP, K1, (K2, NWP, K1, T1, K1, NWP, K1) 15 times; K2, NWP, K2.
Rows 107-108: As row 106.
R109: K1, (K2, NWP, K1) 32 times; K1.
R110: K1, (K2, NWP, K1, T1, K1, NWP, K1) 16 times; K1.
Rows 111-112: As row 110.
R113: K1, (K2, NWP, K1) 32 times; K1.
When knitting the next row: Inc 1 sts at left, Inc 1 sts at right.
R114: K2, (T1, K1, NWP, K3, NWP, K1) 16 times; K2.
Rows 115-116: As row 114.
R117: K2, (K2, NWP, K1) 32 times; K2.
R118: K2, (K2, NWP, K1, T1, K1, NWP, K1) 16 times; K2.
Rows 119-120: As row 118.
R121: K2, (K2, NWP, K1) 32 times; K2.
R122: K2, (T1, K1, NWP, K3, NWP, K1) 16 times; K2.
Rows 123-124: As row 122.
R125: K2, (K2, NWP, K1) 32 times; K2.
R126: K2, (K2, NWP, K1, T1, K1, NWP, K1) 16 times; K2.
Rows 127-128: As row 126.
R129: K2, (K2, NWP, K1) 32 times; K2.
R130: K2, (T1, K1, NWP, K3, NWP, K1) 16 times; K2.
R131: As row 130.
When knitting the next row: Inc 1 sts at left, Inc 1 sts at right.
R132: K3, (T1, K1, NWP, K3, NWP, K1) 16 times; T1, K2.
R133: K3, (K2, NWP, K1) 32 times; K3.
R134: K3, (K2, NWP, K1, T1, K1, NWP, K1) 16 times; K3.
Rows 135-136: As row 134.
R137: K3, (K2, NWP, K1) 32 times; K3.
R138: K3, (T1, K1, NWP, K3, NWP, K1) 16 times; T1, K2.
Rows 139-140: As row 138.

Sleeveless Green Three-Quarter-Length Dress Standard Machine Knitting Pattern - Tuck Rib

R141: K3, (K2, NWP, K1) 32 times; K3.
R142: K3, (K2, NWP, K1, T1, K1, NWP, K1) 16 times; K3.
Rows 143-144: As row 142.
R145: K3, (K2, NWP, K1) 32 times; K3.
R146: K3, (T1, K1, NWP, K3, NWP, K1) 16 times; T1, K2.
Rows 147-148: As row 146.
R149: K3, (K2, NWP, K1) 32 times; K3.
R150: K3, (K2, NWP, K1, T1, K1, NWP, K1) 16 times; K3.
When knitting the next row: Inc 1 sts at left, Inc 1 sts at right.
R151: K2, NWP, K1, (K2, NWP, K1, T1, K1, NWP, K1) 16 times; K4.
R152: As row 151.
R153: K2, (NWP, K3) 33 times; K2.
R154: K2, NWP, K1, (T1, K1, NWP, K3, NWP, K1) 16 times; T1, K3.
Rows 155-156: As row 154.
R157: K2, (NWP, K3) 33 times; K2.
R158: K2, NWP, K1, (K2, NWP, K1, T1, K1, NWP, K1) 16 times; K4.
Rows 159-160: As row 158.
R161: K2, (NWP, K3) 33 times; K2.
R162: K2, NWP, K1, (T1, K1, NWP, K3, NWP, K1) 16 times; T1, K3.
Rows 163-164: As row 162.
R165: K2, (NWP, K3) 33 times; K2.
R166: K2, NWP, K1, (K2, NWP, K1, T1, K1, NWP, K1) 16 times; K4.
Rows 167-168: As row 166.
R169: K2, (NWP, K3) 33 times; K2.
When knitting the next row: Inc 1 sts at left, Inc 1 sts at right.
R170: K1, (K2, NWP, K1, T1, K1, NWP, K1) 17 times; K1.
Rows 171-172: As row 170.
R173: K1, (K2, NWP, K1) 34 times; K1.
R174: K3, NWP, K1, (K2, NWP, K1, T1, K1, NWP, K1) 16 times; K2, NWP, K2.
Rows 175-176: As row 174.
R177: K1, (K2, NWP, K1) 34 times; K1.
R178: K1, (K2, NWP, K1, T1, K1, NWP, K1) 17 times; K1.
Rows 179-180: As row 178.
R181: K1, (K2, NWP, K1) 34 times; K1.
R182: K3, NWP, K1, (K2, NWP, K1, T1, K1, NWP, K1) 16 times; K2, NWP, K2.
Rows 183-184: As row 182.
R185: K1, (K2, NWP, K1) 34 times; K1.
R186: K1, (K2, NWP, K1, T1, K1, NWP, K1) 17 times; K1.
Rows 187-188: As row 186.
When knitting the next row: Inc 1 sts at left, Inc 1 sts at right.
R189: K2, (K2, NWP, K1) 34 times; K2.
R190: K2, (T1, K1, NWP, K3, NWP, K1) 17 times; K2.
Rows 191-192: As row 190.
R193: K2, (K2, NWP, K1) 34 times; K2.
R194: K2, (K2, NWP, K1, T1, K1, NWP, K1) 17 times; K2.
Rows 195-196: As row 194.
R197: K2, (K2, NWP, K1) 34 times; K2.
R198: K2, (T1, K1, NWP, K3, NWP, K1) 17 times; K2.
Rows 199-200: As row 198.
R201: K2, (K2, NWP, K1) 34 times; K2.
R202: K2, (K2, NWP, K1, T1, K1, NWP, K1) 17 times; K2.
Rows 203-204: As row 202.
R205: K2, (K2, NWP, K1) 34 times; K2.
R206: K2, (T1, K1, NWP, K3, NWP, K1) 17 times; K2.
When knitting the next row: Inc 1 sts at left, Inc 1 sts at right.
R207: K3, (T1, K1, NWP, K3, NWP, K1) 17 times; T1, K2.
R208: As row 207.
R209: K3, (K2, NWP, K1) 34 times; K3.
R210: K3, (K2, NWP, K1, T1, K1, NWP, K1) 17 times; K3.
Rows 211-212: As row 210.

Sleeveless Green Three-Quarter-Length Dress Standard Machine Knitting Pattern - Tuck Rib

R213: K3, (K2, NWP, K1) 34 times; K3.
R214: K3, (T1, K1, NWP, K3, NWP, K1) 17 times; T1, K2.
Rows 215-216: As row 214.
R217: K3, (K2, NWP, K1) 34 times; K3.
R218: K3, (K2, NWP, K1, T1, K1, NWP, K1) 17 times; K3.
Rows 219-220: As row 218.
R221: K3, (K2, NWP, K1) 34 times; K3.
R222: K3, (T1, K1, NWP, K3, NWP, K1) 17 times; T1, K2.
Rows 223-224: As row 222.
R225: K3, (K2, NWP, K1) 34 times; K3.
When knitting the next row: Inc 1 sts at left, Inc 1 sts at right.
R226: K2, NWP, K1, (K2, NWP, K1, T1, K1, NWP, K1) 17 times; K4.
Rows 227-228: As row 226.
R229: K2, (NWP, K3) 35 times; K2.
R230: K2, NWP, K1, (T1, K1, NWP, K3, NWP, K1) 17 times; T1, K3.
Rows 231-232: As row 230.
R233: K2, (NWP, K3) 35 times; K2.
R234: K2, NWP, K1, (K2, NWP, K1, T1, K1, NWP, K1) 17 times; K4.
Rows 235-236: As row 234.
R237: K2, (NWP, K3) 35 times; K2.
R238: K2, NWP, K1, (T1, K1, NWP, K3, NWP, K1) 17 times; T1, K3.
Rows 239-240: As row 238.
R241: K2, (NWP, K3) 35 times; K2.
R242: K2, NWP, K1, (K2, NWP, K1, T1, K1, NWP, K1) 17 times; K4.
Rows 243-244: As row 242.
When knitting the next row: Inc 1 sts at left, Inc 1 sts at right.
R245: K1, (K2, NWP, K1) 36 times; K1.
R246: K1, (K2, NWP, K1, T1, K1, NWP, K1) 18 times; K1.
Rows 247-248: As row 246.
R249: K1, (K2, NWP, K1) 36 times; K1.
R250: K3, NWP, K1, (K2, NWP, K1, T1, K1, NWP, K1) 17 times; K2, NWP, K2.
Rows 251-252: As row 250.
R253: K1, (K2, NWP, K1) 36 times; K1.
R254: K1, (K2, NWP, K1, T1, K1, NWP, K1) 18 times; K1.
Rows 255-256: As row 254.
R257: K1, (K2, NWP, K1) 36 times; K1.
R258: K3, NWP, K1, (K2, NWP, K1, T1, K1, NWP, K1) 17 times; K2, NWP, K2.
Rows 259-260: As row 258.
R261: K1, (K2, NWP, K1) 36 times; K1.
R262: K1, (K2, NWP, K1, T1, K1, NWP, K1) 18 times; K1.
Rows 263-264: As row 262.
R265: K1, (K2, NWP, K1) 36 times; K1.
R266: K3, NWP, K1, (K2, NWP, K1, T1, K1, NWP, K1) 17 times; K2, NWP, K2.
Rows 267-268: As row 266.
R269: K1, (K2, NWP, K1) 36 times; K1.
R270: K1, (K2, NWP, K1, T1, K1, NWP, K1) 18 times; K1.
Rows 271-272: As row 270.
R273: K1, (K2, NWP, K1) 36 times; K1.
R274: K3, NWP, K1, (K2, NWP, K1, T1, K1, NWP, K1) 17 times; K2, NWP, K2.
Rows 275-276: As row 274.
R277: K1, (K2, NWP, K1) 36 times; K1.
R278: K1, (K2, NWP, K1, T1, K1, NWP, K1) 18 times; K1.
Rows 279-280: As row 278.
R281: K1, (K2, NWP, K1) 36 times; K1.
R282: K3, NWP, K1, (K2, NWP, K1, T1, K1, NWP, K1) 17 times; K2, NWP, K2.
Rows 283-284: As row 282.
R285: K1, (K2, NWP, K1) 36 times; K1.
R286: K1, (K2, NWP, K1, T1, K1, NWP, K1) 18 times; K1.
Rows 287-288: As row 286.
R289: K1, (K2, NWP, K1) 36 times; K1.

Sleeveless Green Three-Quarter-Length Dress Standard Machine Knitting Pattern - Tuck Rib

R290: K3, NWP, K1, (K2, NWP, K1, T1, K1, NWP, K1) 17 times; K2, NWP, K2.
When knitting the next row: Dec 1 sts at left, Dec 1 sts at right.
R291: K2, NWP, K1, (K2, NWP, K1, T1, K1, NWP, K1) 17 times; K4.
R292: As row 291.
R293: K2, (NWP, K3) 35 times; K2.
R294: K2, NWP, K1, (T1, K1, NWP, K3, NWP, K1) 17 times; T1, K3.
Rows 295-296: As row 294.
R297: K2, (NWP, K3) 35 times; K2.
R298: K2, NWP, K1, (K2, NWP, K1, T1, K1, NWP, K1) 17 times; K4.
When knitting the next row: Dec 1 sts at left, Dec 1 sts at right.
R299: K3, (K2, NWP, K1, T1, K1, NWP, K1) 17 times; K3.
R300: As row 299.
R301: K3, (K2, NWP, K1) 34 times; K3.
R302: K3, (T1, K1, NWP, K3, NWP, K1) 17 times; T1, K2.
Rows 303-304: As row 302.
R305: K3, (K2, NWP, K1) 34 times; K3.
R306: K3, (K2, NWP, K1, T1, K1, NWP, K1) 17 times; K3.
R307: As row 306.
When knitting the next row: Dec 1 sts at left, Dec 1 sts at right.
R308: K2, (K2, NWP, K1, T1, K1, NWP, K1) 17 times; K2.
R309: K2, (K2, NWP, K1) 34 times; K2.
R310: K2, (T1, K1, NWP, K3, NWP, K1) 17 times; K2.
Rows 311-312: As row 310.
R313: K2, (K2, NWP, K1) 34 times; K2.
R314: K2, (K2, NWP, K1, T1, K1, NWP, K1) 17 times; K2.
R315: As row 314.
When knitting the next row: Dec 1 sts at left, Dec 1 sts at right.
R316: K1, (K2, NWP, K1, T1, K1, NWP, K1) 17 times; K1.
R317: K1, (K2, NWP, K1) 34 times; K1.
R318: K3, NWP, K1, (K2, NWP, K1, T1, K1, NWP, K1) 16 times; K2, NWP, K2.
Rows 319-320: As row 318.
R321: K1, (K2, NWP, K1) 34 times; K1.
R322: K1, (K2, NWP, K1, T1, K1, NWP, K1) 17 times; K1.
Rows 323-324: As row 322.
When knitting the next row: Dec 1 sts at left, Dec 1 sts at right.
R325: K2, (NWP, K3) 33 times; K2.
R326: K2, NWP, K1, (K2, NWP, K1, T1, K1, NWP, K1) 16 times; K4.
Rows 327-328: As row 326.
R329: K2, (NWP, K3) 33 times; K2.
R330: K2, NWP, K1, (T1, K1, NWP, K3, NWP, K1) 16 times; T1, K3.
Rows 331-332: As row 330.
When knitting the next row: Dec 1 sts at left, Dec 1 sts at right.
R333: K3, (K2, NWP, K1) 32 times; K3.
R334: K3, (K2, NWP, K1, T1, K1, NWP, K1) 16 times; K3.
Rows 335-336: As row 334.
R337: K3, (K2, NWP, K1) 32 times; K3.
R338: K3, (T1, K1, NWP, K3, NWP, K1) 16 times; T1, K2.
Rows 339-340: As row 338.
R341: K3, (K2, NWP, K1) 32 times; K3.
When knitting the next row: Dec 1 sts at left, Dec 1 sts at right.
R342: K2, (K2, NWP, K1, T1, K1, NWP, K1) 16 times; K2.
Rows 343-344: As row 342.
R345: K2, (K2, NWP, K1) 32 times; K2.
R346: K2, (T1, K1, NWP, K3, NWP, K1) 16 times; K2.
Rows 347-348: As row 346.
R349: K2, (K2, NWP, K1) 32 times; K2.
When knitting the next row: Dec 1 sts at left, Dec 1 sts at right.
R350: K1, (K2, NWP, K1, T1, K1, NWP, K1) 16 times; K1.
Rows 351-352: As row 350.
R353: K1, (K2, NWP, K1) 32 times; K1.

Sleeveless Green Three-Quarter-Length Dress Standard Machine Knitting Pattern - Tuck Rib

R354: K3, NWP, K1, (K2, NWP, K1, T1, K1, NWP, K1) 15 times; K2, NWP, K2.
Rows 355-356: As row 354.
R357: K1, (K2, NWP, K1) 32 times; K1.
R358: K1, (K2, NWP, K1, T1, K1, NWP, K1) 16 times; K1.
When knitting the next row: Dec 1 sts at left, Dec 1 sts at right.
R359: K2, NWP, K1, (T1, K1, NWP, K3, NWP, K1) 15 times; T1, K3.
R360: As row 359.
R361: K2, (NWP, K3) 31 times; K2.
R362: K2, NWP, K1, (K2, NWP, K1, T1, K1, NWP, K1) 15 times; K4.
Rows 363-364: As row 362.
R365: K2, (NWP, K3) 31 times; K2.
R366: K2, NWP, K1, (T1, K1, NWP, K3, NWP, K1) 15 times; T1, K3.
When knitting the next row: Dec 1 sts at left, Dec 1 sts at right.
R367: K3, (T1, K1, NWP, K3, NWP, K1) 15 times; T1, K2.
R368: As row 367.
R369: K3, (K2, NWP, K1) 30 times; K3.
R370: K3, (K2, NWP, K1, T1, K1, NWP, K1) 15 times; K3.
Rows 371-372: As row 370.
R373: K3, (K2, NWP, K1) 30 times; K3.
R374: K3, (T1, K1, NWP, K3, NWP, K1) 15 times; T1, K2.
R375: As row 374.
When knitting the next row: Dec 1 sts at left, Dec 1 sts at right.
R376: K2, (T1, K1, NWP, K3, NWP, K1) 15 times; K2.
R377: K2, (K2, NWP, K1) 30 times; K2.
R378: K2, (K2, NWP, K1, T1, K1, NWP, K1) 15 times; K2.
Rows 379-380: As row 378.
R381: K2, (K2, NWP, K1) 30 times; K2.
R382: K2, (T1, K1, NWP, K3, NWP, K1) 15 times; K2.
R383: As row 382.
When knitting the next row: Dec 1 sts at left, Dec 1 sts at right.
R384: K3, NWP, K1, (K2, NWP, K1, T1, K1, NWP, K1) 14 times; K2, NWP, K2.
R385: K1, (K2, NWP, K1) 30 times; K1.
R386: K1, (K2, NWP, K1, T1, K1, NWP, K1) 15 times; K1.
Rows 387-388: As row 386.
R389: K1, (K2, NWP, K1) 30 times; K1.
R390: K3, NWP, K1, (K2, NWP, K1, T1, K1, NWP, K1) 14 times; K2, NWP, K2.
Rows 391-392: As row 390.
When knitting the next row: Dec 1 sts at left, Dec 1 sts at right.
R393: K2, (NWP, K3) 29 times; K2.
R394: K2, NWP, K1, (T1, K1, NWP, K3, NWP, K1) 14 times; T1, K3.
Rows 395-396: As row 394.
R397: K2, (NWP, K3) 29 times; K2.
R398: K2, NWP, K1, (K2, NWP, K1, T1, K1, NWP, K1) 14 times; K4.
Rows 399-400: As row 398.
When knitting the next row: Dec 1 sts at left, Dec 1 sts at right.
R401: K3, (K2, NWP, K1) 28 times; K3.
R402: K3, (T1, K1, NWP, K3, NWP, K1) 14 times; T1, K2.
Rows 403-404: As row 402.
R405: K3, (K2, NWP, K1) 28 times; K3.
R406: K3, (K2, NWP, K1, T1, K1, NWP, K1) 14 times; K3.
Rows 407-408: As row 406.
R409: K3, (K2, NWP, K1) 28 times; K3.
R410: K3, (T1, K1, NWP, K3, NWP, K1) 14 times; T1, K2.
Rows 411-412: As row 410.
R413: K3, (K2, NWP, K1) 28 times; K3.
R414: K3, (K2, NWP, K1, T1, K1, NWP, K1) 14 times; K3.
Rows 415-416: As row 414.
R417: K3, (K2, NWP, K1) 28 times; K3.
R418: K3, (T1, K1, NWP, K3, NWP, K1) 14 times; T1, K2.
Rows 419-420: As row 418.

Sleeveless Green Three-Quarter-Length Dress Standard Machine Knitting Pattern - Tuck Rib

R421: K3, (K2, NWP, K1) 28 times; K3.
R422: K3, (K2, NWP, K1, T1, K1, NWP, K1) 14 times; K3.
Rows 423-424: As row 422.
R425: K3, (K2, NWP, K1) 28 times; K3.
R426: K3, (T1, K1, NWP, K3, NWP, K1) 14 times; T1, K2.
Rows 427-428: As row 426.
R429: K3, (K2, NWP, K1) 28 times; K3.
When knitting the next row: Inc 1 sts at left, Inc 1 sts at right.
R430: K2, NWP, K1, (K2, NWP, K1, T1, K1, NWP, K1) 14 times; K4.
Rows 431-432: As row 430.
R433: K2, (NWP, K3) 29 times; K2.
R434: K2, NWP, K1, (T1, K1, NWP, K3, NWP, K1) 14 times; T1, K3.
Rows 435-436: As row 434.
R437: K2, (NWP, K3) 29 times; K2.
R438: K2, NWP, K1, (K2, NWP, K1, T1, K1, NWP, K1) 14 times; K4.
R439: As row 438.
When knitting the next row: Inc 1 sts at left, Inc 1 sts at right.
R440: K3, NWP, K1, (K2, NWP, K1, T1, K1, NWP, K1) 14 times; K2, NWP, K2.
R441: K1, (K2, NWP, K1) 30 times; K1.
R442: K1, (K2, NWP, K1, T1, K1, NWP, K1) 15 times; K1.
Rows 443-444: As row 442.
R445: K1, (K2, NWP, K1) 30 times; K1.
R446: K3, NWP, K1, (K2, NWP, K1, T1, K1, NWP, K1) 14 times; K2, NWP, K2.
Rows 447-448: As row 446.
R449: K1, (K2, NWP, K1) 30 times; K1.
R450: K1, (K2, NWP, K1, T1, K1, NWP, K1) 15 times; K1.
When knitting the next row: Inc 1 sts at left, Inc 1 sts at right.
R451: K2, (K2, NWP, K1, T1, K1, NWP, K1) 15 times; K2.
R452: As row 451.
R453: K2, (K2, NWP, K1) 30 times; K2.
R454: K2, (T1, K1, NWP, K3, NWP, K1) 15 times; K2.
Rows 455-456: As row 454.
R457: K2, (K2, NWP, K1) 30 times; K2.
R458: K2, (K2, NWP, K1, T1, K1, NWP, K1) 15 times; K2.
Rows 459-460: As row 458.
When knitting the next row: Inc 1 sts at left, Inc 1 sts at right.
R461: K3, (K2, NWP, K1) 30 times; K3.
R462: K3, (T1, K1, NWP, K3, NWP, K1) 15 times; T1, K2.
Rows 463-464: As row 462.
R465: K3, (K2, NWP, K1) 30 times; K3.
R466: K3, (K2, NWP, K1, T1, K1, NWP, K1) 15 times; K3.
Rows 467-468: As row 466.
R469: K3, (K2, NWP, K1) 30 times; K3.
R470: K3, (T1, K1, NWP, K3, NWP, K1) 15 times; T1, K2.
When knitting the next row: Inc 1 sts at left, Inc 1 sts at right.
R471: K2, NWP, K1, (T1, K1, NWP, K3, NWP, K1) 15 times; T1, K3.
R472: As row 471.
R473: K2, (NWP, K3) 31 times; K2.
R474: K2, NWP, K1, (K2, NWP, K1, T1, K1, NWP, K1) 15 times; K4.
Rows 475-476: As row 474.
R477: K2, (NWP, K3) 31 times; K2.
R478: K2, NWP, K1, (T1, K1, NWP, K3, NWP, K1) 15 times; T1, K3.
Rows 479-480: As row 478.
R481: K2, (NWP, K3) 31 times; K2.
When knitting the next row: Inc 1 sts at left, Inc 1 sts at right.
R482: K3, NWP, K1, (K2, NWP, K1, T1, K1, NWP, K1) 15 times; K2, NWP, K2.
Rows 483-484: As row 482.
R485: K1, (K2, NWP, K1) 32 times; K1.
R486: K1, (K2, NWP, K1, T1, K1, NWP, K1) 16 times; K1.
Rows 487-488: As row 486.

Sleeveless Green Three-Quarter-Length Dress Standard Machine Knitting Pattern - Tuck Rib

R489: K1, (K2, NWP, K1) 32 times; K1.
R490: K3, NWP, K1, (K2, NWP, K1, T1, K1, NWP, K1) 15 times; K2, NWP, K2.
R491: As row 490.
When knitting the next row: Inc 1 sts at left, Inc 1 sts at right.
R492: K4, NWP, K1, (K2, NWP, K1, T1, K1, NWP, K1) 15 times; K2, NWP, K3.
R493: K2, (K2, NWP, K1) 32 times; K2.
R494: K2, (K2, NWP, K1, T1, K1, NWP, K1) 16 times; K2.
Rows 495-496: As row 494.
R497: K2, (K2, NWP, K1) 32 times; K2.
R498: K2, (T1, K1, NWP, K3, NWP, K1) 16 times; K2.
Rows 499-500: As row 498.
R501: K2, (K2, NWP, K1) 32 times; K2.
R502: K2, (K2, NWP, K1, T1, K1, NWP, K1) 16 times; K2.
When knitting the next row: Inc 1 sts at left, Inc 1 sts at right.
R503: K3, (K2, NWP, K1, T1, K1, NWP, K1) 16 times; K3.
R504: As row 503.
R505: K3, (K2, NWP, K1) 32 times; K3.
R506: K3, (T1, K1, NWP, K3, NWP, K1) 16 times; T1, K2.
Rows 507-508: As row 506.
R509: K3, (K2, NWP, K1) 32 times; K3.
R510: K3, (K2, NWP, K1, T1, K1, NWP, K1) 16 times; K3.
Rows 511-512: As row 510.
When knitting the next row: Inc 1 sts at left, Inc 1 sts at right.
R513: K4, (K2, NWP, K1) 32 times; K4.
R514: K2, NWP, K1, (T1, K1, NWP, K3, NWP, K1) 16 times; T1, K3.
Rows 515-516: As row 514.
R517: K2, (NWP, K3) 33 times; K2.
R518: K2, NWP, K1, (K2, NWP, K1, T1, K1, NWP, K1) 16 times; K4.
Rows 519-520: As row 518.
R521: K2, (NWP, K3) 33 times; K2.
R522: K2, NWP, K1, (T1, K1, NWP, K3, NWP, K1) 16 times; T1, K3.
When knitting the next row: Inc 1 sts at left, Inc 1 sts at right.
R523: K1, (K2, NWP, K1, T1, K1, NWP, K1) 17 times; K1.
R524: As row 523.
R525: K1, (K2, NWP, K1) 34 times; K1.
R526: K3, NWP, K1, (K2, NWP, K1, T1, K1, NWP, K1) 16 times; K2, NWP, K2.
Rows 527-528: As row 526.
R529: K1, (K2, NWP, K1) 34 times; K1.
R530: K1, (K2, NWP, K1, T1, K1, NWP, K1) 17 times; K1.
Rows 531-532: As row 530.
R533: K1, (K2, NWP, K1) 34 times; K1.
When knitting the next row: Inc 1 sts at left, Inc 1 sts at right.
R534: K2, (T1, K1, NWP, K3, NWP, K1) 17 times; K2.
Rows 535-536: As row 534.
R537: K2, (K2, NWP, K1) 34 times; K2.
R538: K2, (K2, NWP, K1, T1, K1, NWP, K1) 17 times; K2.
Rows 539-540: As row 538.
R541: K2, (K2, NWP, K1) 34 times; K2.
R542: K2, (T1, K1, NWP, K3, NWP, K1) 17 times; K2.
R543: As row 542.

Only for Front side

When knitting the next row: Inc 1 sts at left, Hold RN1..RN70.
R544: K3, (T1, K1, NWP, K3, NWP, K1) eight times; T1, K3.
Set marker.
When knitting the next row: Dec 1 sts at right.
R545: K3, (K2, NWP, K1) 16 times; K3.
When knitting the next row: Dec 1 sts at right.

Sleeveless Green Three-Quarter-Length Dress Standard Machine Knitting Pattern - Tuck Rib

R546: K2, (K3, NWP, K1, T1, K1, NWP) eight times; K3.
When knitting the next row: Dec 1 sts at right.

R547: K2, (K3, NWP, K1, T1, K1, NWP) eight times; K2.
When knitting the next row: Dec 1 sts at right.

R548: K2, (K3, NWP, K1, T1, K1, NWP) eight times; K1.
When knitting the next row: Dec 1 sts at right.

R549: K3, (K2, NWP, K1) 15 times; K3.

R550: K3, T1, K1, (NWP, K3, NWP, K1, T1, K1) seven times; NWP, K4.
When knitting the next row: Dec 1 sts at right.

R551: K3, T1, (K1, NWP, K3, NWP, K1, T1) seven times; K1, NWP, K3.
R552: As row 551.
When knitting the next row: Dec 1 sts at right.

R553: K2, (K3, NWP) 15 times; K2.

R554: K4, (K1, NWP, K1, T1, K1, NWP, K2) seven times; K1, NWP, K2.
When knitting the next row: Dec 1 sts at right.

R555: K3, (K2, NWP, K1, T1, K1, NWP, K1) seven times; K2, NWP, K1.
R556: As row 555.
When knitting the next row: Dec 1 sts at right.

R557: K3, (K2, NWP, K1) 14 times; K3.

R558: K3, (T1, K1, NWP, K3, NWP, K1) seven times; T1, K2.
When knitting the next row: Dec 1 sts at right.

R559: K2, (K1, T1, K1, NWP, K3, NWP) seven times; K1, T1, K1.
R560: As row 559.
When knitting the next row: Dec 1 sts at right.

R561: K2, (K3, NWP) 14 times; K2.

R562: K2, (K3, NWP, K1, T1, K1, NWP) seven times; K2.
When knitting the next row: Dec 1 sts at right.

R563: K2, (K3, NWP, K1, T1, K1, NWP) seven times; K1.
R564: As row 563.
When knitting the next row: Dec 1 sts at right.

R565: K3, (K2, NWP, K1) 13 times; K3.

R566: K3, T1, K1, (NWP, K3, NWP, K1, T1, K1) six times; NWP, K4.
When knitting the next row: Dec 1 sts at right.

R567: K3, T1, (K1, NWP, K3, NWP, K1, T1) six times; K1, NWP, K3.
R568: As row 567.
When knitting the next row: Dec 1 sts at right.

R569: K2, (K3, NWP) 13 times; K2.

R570: K4, (K1, NWP, K1, T1, K1, NWP, K2) six times; K1, NWP, K2.
When knitting the next row: Dec 1 sts at right.

R571: K3, (K2, NWP, K1, T1, K1, NWP, K1) six times; K4.
R572: As row 571.
When knitting the next row: Dec 1 sts at right.

R573: K3, (K2, NWP, K1) 12 times; K3.

R574: K3, (T1, K1, NWP, K3, NWP, K1) six times; T1, K2.
Rows 575-576: As row 574.
When knitting the next row: Dec 1 sts at right.

R577: K2, (K3, NWP) 12 times; K3.

R578: K2, (K3, NWP, K1, T1, K1, NWP) six times; K3.
Rows 579-580: As row 578.

R581: K2, (K3, NWP) 12 times; K2.

R582: K2, (K1, T1, K1, NWP, K3, NWP) six times; K2.
Rows 583-584: As row 582.
When knitting the next row: Dec 1 sts at right.

R585: K3, (K2, NWP, K1) 11 times; K4.

R586: K5, (NWP, K1, T1, K1, NWP, K3) five times; NWP, K1, T1, K3.
Rows 587-588: As row 586.
When knitting the next row: Dec 1 sts at right.

Sleeveless Green Three-Quarter-Length Dress Standard Machine Knitting Pattern - Tuck Rib

R589: K3, (K2, NWP, K1) 11 times; K3.
R590: K3, T1, K1, (NWP, K3, NWP, K1, T1, K1) five times; NWP, K4.
Rows 591-592: As row 590.
R593: K3, (K2, NWP, K1) 11 times; K3.
When knitting the next row: Dec 1 sts at right.
R594: K4, (K1, NWP, K1, T1, K1, NWP, K2) five times; K1, NWP, K3.
Rows 595-596: As row 594.
R597: K2, (K3, NWP) 11 times; K3.
R598: K3, T1, (K1, NWP, K3, NWP, K1, T1) five times; K1, NWP, K3.
When knitting the next row: Dec 1 sts at right.
R599: K3, T1, (K1, NWP, K3, NWP, K1, T1) five times; K1, NWP, K2.
R600: As row 599.
R601: K2, (K3, NWP) 11 times; K2.
R602: K4, (K1, NWP, K1, T1, K1, NWP, K2) five times; K1, NWP, K2.
R603: As row 602.
When knitting the next row: Dec 1 sts at right.
R604: K3, (K2, NWP, K1, T1, K1, NWP, K1) five times; K4.
R605: K3, (K2, NWP, K1) ten times; K4.
R606: K3, (T1, K1, NWP, K3, NWP, K1) five times; T1, K3.
Rows 607-608: As row 606.
When knitting the next row: Dec 1 sts at right.
R609: K3, (K2, NWP, K1) ten times; K3.
R610: K3, (K2, NWP, K1, T1, K1, NWP, K1) five times; K3.
Rows 611-612: As row 610.
R613: K3, (K2, NWP, K1) ten times; K3.
When knitting the next row: Dec 1 sts at right.
R614: K2, (K1, T1, K1, NWP, K3, NWP) five times; K3.
Rows 615-616: As row 614.
R617: K2, (K3, NWP) ten times; K3.
R618: K2, (K3, NWP, K1, T1, K1, NWP) five times; K3.
When knitting the next row: Dec 1 sts at right.
R619: K2, (K3, NWP, K1, T1, K1, NWP) five times; K2.
R620: As row 619.
R621: K2, (K3, NWP) ten times; K2.
R622: K2, (K1, T1, K1, NWP, K3, NWP) five times; K2.
R623: As row 622.
When knitting the next row: Dec 1 sts at right.
R624: K3, T1, K1, (NWP, K3, NWP, K1, T1, K1) four times; NWP, K5.
R625: K3, (K2, NWP, K1) nine times; K4.
R626: K5, (NWP, K1, T1, K1, NWP, K3) four times; NWP, K1, T1, K3.
Rows 627-628: As row 626.
When knitting the next row: Dec 1 sts at right.
R629: K3, (K2, NWP, K1) nine times; K3.
R630: K3, T1, K1, (NWP, K3, NWP, K1, T1, K1) four times; NWP, K4.
Rows 631-632: As row 630.
R633: K3, (K2, NWP, K1) nine times; K3.
When knitting the next row: Dec 1 sts at right.
R634: K4, (K1, NWP, K1, T1, K1, NWP, K2) four times; K1, NWP, K3.
Rows 635-636: As row 634.
R637: K2, (K3, NWP) nine times; K3.
R638: K3, T1, (K1, NWP, K3, NWP, K1, T1) four times; K1, NWP, K3.
R639: K3, T1, (K1, NWP, K3, NWP, K1, T1) four times; K1, NWP, K2.
R640: As row 639.
R641: K2, (K3, NWP) nine times; K2.
R642: K4, (K1, NWP, K1, T1, K1, NWP, K2) four times; K1, NWP, K2.
R643: As row 642.
When knitting the next row: Dec 1 sts at left, Dec 1 sts at right.

Sleeveless Green Three-Quarter-Length Dress Standard Machine Knitting Pattern - Tuck Rib

R644: K3, (K1, NWP, K1, T1, K1, NWP, K2) four times; K3.
When knitting the next row: Dec 1 sts at left.
R645: K2, (K1, NWP, K2) eight times; K3.
When knitting the next row: Dec 1 sts at left.
R646: K2, (NWP, K3, NWP, K1, T1, K1) four times; K2.
When knitting the next row: Dec 1 sts at left.
R647: K1, (NWP, K3, NWP, K1, T1, K1) four times; K2.
R648: K5, (NWP, K1, T1, K1, NWP, K3) three times; NWP, K1, T1, K3.
When knitting the next row: Dec 1 sts at left, Dec 1 sts at right.
R649: K2, (K2, NWP, K1) seven times; K3.
When knitting the next row: Dec 1 sts at left.
R650: K3, NWP, (K3, NWP, K1, T1, K1, NWP) three times; K4.
When knitting the next row: Dec 1 sts at left.
R651: K2, NWP, (K3, NWP, K1, T1, K1, NWP) three times; K4.
When knitting the next row: Dec 1 sts at left.
R652: K3, (K2, NWP, K1, T1, K1, NWP, K1) three times; K3.
When knitting the next row: Dec 1 sts at left.
R653: K2, (K2, NWP, K1) six times; K3.
When knitting the next row: Dec 1 sts at left, Dec 1 sts at right.
R654: K3, NWP, K1, (K2, NWP, K1, T1, K1, NWP, K1) twice; K2, NWP, K3.
R655: As row 654.
When knitting the next row: Dec 1 sts at left.
R656: K2, NWP, K2, (K1, NWP, K1, T1, K1, NWP, K2) twice; K1, NWP, K3.
When knitting the next row: Dec 1 sts at left.
R657: K25.
When knitting the next row: Dec 1 sts at left.
R658: K24.
Cast off remainder.
----- New section -----
Pick up RN1..RN70, Inc 1
R544: K2, NWP, (K1, T1, K1, NWP, K3, NWP) eight times; K1, T1, K2.
Set marker.
When knitting the next row: Dec 1 sts at left.
R545: K3, (K2, NWP, K1) 16 times; K3.
When knitting the next row: Dec 1 sts at left.
R546: K2, (K2, NWP, K1, T1, K1, NWP, K1) eight times; K3.
When knitting the next row: Dec 1 sts at left.
R547: K2, (K1, NWP, K1, T1, K1, NWP, K2) eight times; K2.
When knitting the next row: Dec 1 sts at left.
R548: K1, (K1, NWP, K1, T1, K1, NWP, K2) eight times; K2.
When knitting the next row: Dec 1 sts at left.
R549: K3, (K2, NWP, K1) 15 times; K3.
R550: K5, (NWP, K1, T1, K1, NWP, K3) seven times; NWP, K1, T1, K2.
When knitting the next row: Dec 1 sts at left.
R551: K4, (NWP, K1, T1, K1, NWP, K3) seven times; NWP, K1, T1, K2.
R552: As row 551.
When knitting the next row: Dec 1 sts at left.
R553: K2, (K1, NWP, K2) 15 times; K2.
R554: K3, NWP, (K3, NWP, K1, T1, K1, NWP) seven times; K4.
When knitting the next row: Dec 1 sts at left.
R555: K2, NWP, (K3, NWP, K1, T1, K1, NWP) seven times; K4.
R556: As row 555.
When knitting the next row: Dec 1 sts at left.
R557: K4, (K1, NWP, K2) 14 times; K2.
R558: K3, (T1, K1, NWP, K3, NWP, K1) seven times; T1, K2.
When knitting the next row: Dec 1 sts at left.
R559: K2, (T1, K1, NWP, K3, NWP, K1) seven times; T1, K2.

Sleeveless Green Three-Quarter-Length Dress Standard Machine Knitting Pattern - Tuck Rib

R560: As row 559.

When knitting the next row: Dec 1 sts at left.

R561: K2, (K1, NWP, K2) 14 times; K2.

R562: K2, (K1, NWP, K1, T1, K1, NWP, K2) seven times; K2.

When knitting the next row: Dec 1 sts at left.

R563: K1, (K1, NWP, K1, T1, K1, NWP, K2) seven times; K2.

R564: As row 563.

When knitting the next row: Dec 1 sts at left.

R565: K3, (K2, NWP, K1) 13 times; K3.

R566: K5, (NWP, K1, T1, K1, NWP, K3) six times; NWP, K1, T1, K2.

When knitting the next row: Dec 1 sts at left.

R567: K4, (NWP, K1, T1, K1, NWP, K3) six times; NWP, K1, T1, K2.

R568: As row 567.

When knitting the next row: Dec 1 sts at left.

R569: K2, (K1, NWP, K2) 13 times; K2.

R570: K3, NWP, (K3, NWP, K1, T1, K1, NWP) six times; K4.

When knitting the next row: Dec 1 sts at left.

R571: K2, NWP, (K3, NWP, K1, T1, K1, NWP) six times; K4.

R572: As row 571.

When knitting the next row: Dec 1 sts at left.

R573: K3, (K2, NWP, K1) 12 times; K3.

R574: K3, (T1, K1, NWP, K3, NWP, K1) six times; T1, K2.

Rows 575-576: As row 574.

When knitting the next row: Dec 1 sts at left.

R577: K2, (K2, NWP, K1) 12 times; K3.

R578: K2, (K2, NWP, K1, T1, K1, NWP, K1) six times; K3.

Rows 579-580: As row 578.

When knitting the next row: Dec 1 sts at left.

R581: K2, (K1, NWP, K2) 12 times; K2.

R582: K2, (K1, NWP, K3, NWP, K1, T1) six times; K2.

Rows 583-584: As row 582.

When knitting the next row: Dec 1 sts at left.

R585: K1, (K1, NWP, K2) 12 times; K2.

R586: K1, (K1, NWP, K1, T1, K1, NWP, K2) six times; K2.

Rows 587-588: As row 586.

When knitting the next row: Dec 1 sts at left.

R589: K3, (K2, NWP, K1) 11 times; K3.

R590: K5, (NWP, K1, T1, K1, NWP, K3) five times; NWP, K1, T1, K2.

Rows 591-592: As row 590.

R593: K3, (K2, NWP, K1) 11 times; K3.

When knitting the next row: Dec 1 sts at left.

R594: K2, T1, K1, (NWP, K3, NWP, K1, T1, K1) five times; NWP, K4.

Rows 595-596: As row 594.

R597: K2, (K2, NWP, K1) 11 times; K3.

R598: K4, (NWP, K1, T1, K1, NWP, K3) five times; NWP, K1, T1, K2.

When knitting the next row: Dec 1 sts at left.

R599: K3, NWP, (K1, T1, K1, NWP, K3, NWP) five times; K1, T1, K2.

R600: As row 599.

R601: K2, (K1, NWP, K2) 11 times; K2.

R602: K3, NWP, (K3, NWP, K1, T1, K1, NWP) five times; K4.

R603: As row 602.

When knitting the next row: Dec 1 sts at left.

R604: K2, NWP, (K3, NWP, K1, T1, K1, NWP) five times; K4.

R605: K1, (K1, NWP, K2) 11 times; K2.

R606: K2, NWP, (K1, T1, K1, NWP, K3, NWP) five times; K1, T1, K2.

Rows 607-608: As row 606.

R609: K1, (NWP, K3) 11 times; K1.

Sleeveless Green Three-Quarter-Length Dress Standard Machine Knitting Pattern - Tuck Rib

R610: K3, (K2, NWP, K1, T1, K1, NWP, K1) five times; K3.
Rows 611-612: As row 610.
R613: K3, (K2, NWP, K1) ten times; K3.
When knitting the next row: Dec 1 sts at left.
R614: K2, (T1, K1, NWP, K3, NWP, K1) five times; T1, K2.
Rows 615-616: As row 614.
R617: K2, (K2, NWP, K1) ten times; K3.
R618: K2, (K2, NWP, K1, T1, K1, NWP, K1) five times; K3.
When knitting the next row: Dec 1 sts at left.
R619: K2, (K1, NWP, K1, T1, K1, NWP, K2) five times; K2.
R620: As row 619.
R621: K2, (K1, NWP, K2) ten times; K2.
R622: K2, (K1, NWP, K3, NWP, K1, T1) five times; K2.
R623: As row 622.
When knitting the next row: Dec 1 sts at left.
R624: K1, (K1, NWP, K3, NWP, K1, T1) five times; K2.
R625: K1, (K1, NWP, K2) ten times; K2.
R626: K1, (K1, NWP, K1, T1, K1, NWP, K2) five times; K2.
Rows 627-628: As row 626.
When knitting the next row: Dec 1 sts at left.
R629: K3, (K2, NWP, K1) nine times; K3.
R630: K5, (NWP, K1, T1, K1, NWP, K3) four times; NWP, K1, T1, K2.
Rows 631-632: As row 630.
R633: K3, (K2, NWP, K1) nine times; K3.
When knitting the next row: Dec 1 sts at left.
R634: K2, T1, K1, (NWP, K3, NWP, K1, T1, K1) four times; NWP, K4.
Rows 635-636: As row 634.
R637: K2, (K2, NWP, K1) nine times; K3.
R638: K4, (NWP, K1, T1, K1, NWP, K3) four times; NWP, K1, T1, K2.
When knitting the next row: Dec 1 sts at left.
R639: K3, NWP, (K1, T1, K1, NWP, K3, NWP) four times; K1, T1, K2.
R640: As row 639.
R641: K2, (K1, NWP, K2) nine times; K2.
R642: K3, NWP, (K3, NWP, K1, T1, K1, NWP) four times; K4.
R643: As row 642.
When knitting the next row: Dec 1 sts at left, Dec 1 sts at right.
R644: K2, NWP, (K3, NWP, K1, T1, K1, NWP) four times; K3.
When knitting the next row: Dec 1 sts at right.
R645: (K2, NWP, K1) nine times; K1.
When knitting the next row: Dec 1 sts at right.
R646: K2, (NWP, K1, T1, K1, NWP, K3) four times; NWP, K1.
When knitting the next row: Dec 1 sts at right.
R647: K1, (K1, NWP, K1, T1, K1, NWP, K2) four times; K2.
R648: As row 647.
When knitting the next row: Dec 1 sts at left, Dec 1 sts at right.
R649: K2, (K3, NWP) seven times; K3.
When knitting the next row: Dec 1 sts at right.
R650: K4, (K1, NWP, K1, T1, K1, NWP, K2) three times; K1, NWP, K2.
When knitting the next row: Dec 1 sts at right.
R651: K3, (K2, NWP, K1, T1, K1, NWP, K1) three times; K4.
When knitting the next row: Dec 1 sts at right.
R652: K3, (K2, NWP, K1, T1, K1, NWP, K1) three times; K3.
When knitting the next row: Dec 1 sts at right.
R653: K2, (K3, NWP) six times; K3.
When knitting the next row: Dec 1 sts at left, Dec 1 sts at right.
R654: K1, (K1, T1, K1, NWP, K3, NWP) three times; K2.
R655: As row 654.

Sleeveless Green Three-Quarter-Length Dress Standard Machine Knitting Pattern - Tuck Rib

When knitting the next row: Dec 1 sts at right.

R656: K1, (K1, T1, K1, NWP, K3, NWP) two times; K1, T1, K1, NWP, K5.

When knitting the next row: Dec 1 sts at right.

R657: K25.

When knitting the next row: Dec 1 sts at right.

R658: K24.

Cast off remainder.

End of piece.

Only for Back side

When knitting the next row: Inc 1 sts at left, Inc 1 sts at right.

R544: K3, (T1, K1, NWP, K3, NWP, K1) 17 times; T1, K2.

Set marker.

R545: K3, (K2, NWP, K1) 34 times; K3.

R546: K3, (K2, NWP, K1, T1, K1, NWP, K1) 17 times; K3.

Rows 547-548: As row 546.

R549: K3, (K2, NWP, K1) 34 times; K3.

R550: K3, (T1, K1, NWP, K3, NWP, K1) 17 times; T1, K2.

Rows 551-552: As row 550.

R553: K3, (K2, NWP, K1) 34 times; K3.

R554: K3, (K2, NWP, K1, T1, K1, NWP, K1) 17 times; K3.

Rows 555-556: As row 554.

R557: K3, (K2, NWP, K1) 34 times; K3.

R558: K3, (T1, K1, NWP, K3, NWP, K1) 17 times; T1, K2.

Rows 559-560: As row 558.

R561: K3, (K2, NWP, K1) 34 times; K3.

R562: K3, (K2, NWP, K1, T1, K1, NWP, K1) 17 times; K3.

Rows 563-564: As row 562.

R565: K3, (K2, NWP, K1) 34 times; K3.

R566: K3, (T1, K1, NWP, K3, NWP, K1) 17 times; T1, K2.

Rows 567-568: As row 566.

R569: K3, (K2, NWP, K1) 34 times; K3.

R570: K3, (K2, NWP, K1, T1, K1, NWP, K1) 17 times; K3.

Rows 571-572: As row 570.

R573: K3, (K2, NWP, K1) 34 times; K3.

R574: K3, (T1, K1, NWP, K3, NWP, K1) 17 times; T1, K2.

Rows 575-576: As row 574.

R577: K3, (K2, NWP, K1) 34 times; K3.

R578: K3, (K2, NWP, K1, T1, K1, NWP, K1) 17 times; K3.

Rows 579-580: As row 578.

R581: K3, (K2, NWP, K1) 34 times; K3.

R582: K3, (T1, K1, NWP, K3, NWP, K1) 17 times; T1, K2.

Rows 583-584: As row 582.

R585: K3, (K2, NWP, K1) 34 times; K3.

R586: K3, (K2, NWP, K1, T1, K1, NWP, K1) 17 times; K3.

Rows 587-588: As row 586.

R589: K3, (K2, NWP, K1) 34 times; K3.

R590: K3, (T1, K1, NWP, K3, NWP, K1) 17 times; T1, K2.

Rows 591-592: As row 590.

R593: K3, (K2, NWP, K1) 34 times; K3.

R594: K3, (K2, NWP, K1, T1, K1, NWP, K1) 17 times; K3.

Rows 595-596: As row 594.

R597: K3, (K2, NWP, K1) 34 times; K3.

R598: K3, (T1, K1, NWP, K3, NWP, K1) 17 times; T1, K2.

Rows 599-600: As row 598.

R601: K3, (K2, NWP, K1) 34 times; K3.

R602: K3, (K2, NWP, K1, T1, K1, NWP, K1) 17 times; K3.

Rows 603-604: As row 602.

Sleeveless Green Three-Quarter-Length Dress Standard Machine Knitting Pattern - Tuck Rib

R605: K3, (K2, NWP, K1) 34 times; K3.
R606: K3, (T1, K1, NWP, K3, NWP, K1) 17 times; T1, K2.
Rows 607-608: As row 606.
R609: K3, (K2, NWP, K1) 34 times; K3.
R610: K3, (K2, NWP, K1, T1, K1, NWP, K1) 17 times; K3.
Rows 611-612: As row 610.
R613: K3, (K2, NWP, K1) 34 times; K3.
R614: K3, (T1, K1, NWP, K3, NWP, K1) 17 times; T1, K2.
Rows 615-616: As row 614.
R617: K3, (K2, NWP, K1) 34 times; K3.
R618: K3, (K2, NWP, K1, T1, K1, NWP, K1) 17 times; K3.
Rows 619-620: As row 618.
R621: K3, (K2, NWP, K1) 34 times; K3.
R622: K3, (T1, K1, NWP, K3, NWP, K1) 17 times; T1, K2.
Rows 623-624: As row 622.
R625: K3, (K2, NWP, K1) 34 times; K3.
R626: K3, (K2, NWP, K1, T1, K1, NWP, K1) 17 times; K3.
Rows 627-628: As row 626.
R629: K3, (K2, NWP, K1) 34 times; K3.
R630: K3, (T1, K1, NWP, K3, NWP, K1) 17 times; T1, K2.
Rows 631-632: As row 630.
R633: K3, (K2, NWP, K1) 34 times; K3.
R634: K3, (K2, NWP, K1, T1, K1, NWP, K1) 17 times; K3.
Rows 635-636: As row 634.
R637: K3, (K2, NWP, K1) 34 times; K3.
R638: K3, (T1, K1, NWP, K3, NWP, K1) 17 times; T1, K2.
Rows 639-640: As row 638.
R641: K3, (K2, NWP, K1) 34 times; K3.
R642: K3, (K2, NWP, K1, T1, K1, NWP, K1) 17 times; K3.
R643: As row 642.
When knitting the next row: Dec 1 sts at left, Dec 1 sts at right.
R644: K2, (K2, NWP, K1, T1, K1, NWP, K1) 17 times; K2.
When knitting the next row: Dec 1 sts at left, Dec 1 sts at right.
R645: K1, (K2, NWP, K1) 34 times; K1.
When knitting the next row: Dec 1 sts at left, Dec 1 sts at right.
R646: K2, NWP, K1, (K2, NWP, K1, T1, K1, NWP, K1) 16 times; K2, NWP, K1.
When knitting the next row: Dec 1 sts at left, Dec 1 sts at right.
R647: K1, NWP, K1, (K2, NWP, K1, T1, K1, NWP, K1) 16 times; K3.
R648: K3, (K2, NWP, K1, T1, K1, NWP, K1) 16 times; K3.
When knitting the next row: Dec 1 sts at left, Dec 1 sts at right.
R649: K1, (K3, NWP) 12 times; K16, (K3, NWP) 16 times; K3.
When knitting the next row: Dec 1 sts at left, Dec 1 sts at right.
R650: (K3, NWP) twice; K1, (T1, K1, NWP, K3, NWP, K1) five times; K33, (K1, NWP, K3, NWP, K1, T1) five times; (K1, NWP, K2) twice.
When knitting the next row: Dec 1 sts at left, Prepare LN17.. LN1 for centre shaping, Hold LN64..LN18, Dec 1 sts at right.
R651: K17, (K1, NWP, K3, NWP, K1, T1) five times; K1, NWP, K5.
When knitting the next row: Dec 17 sts at left, Dec 1 sts at right.
R652: K10, (K3, NWP, K1, T1, K1, NWP) four times; K4.
When knitting the next row: Dec 1 sts at right.
R653: K10, (K3, NWP) eight times; K3.
When knitting the next row: Dec 12 sts at left, Dec 1 sts at right.
R654: K4, (K1, NWP, K1, T1, K1, NWP, K2) three times; K1, NWP, K2.
R655: As row 654.
When knitting the next row: Dec 5 sts at left, Dec 1 sts at right.
R656: (NWP, K1, T1, K1, NWP, K3) three times; K2.
When knitting the next row: Dec 1 sts at right.
R657: K25.
When knitting the next row: Dec 1 sts at right.
R658: K24.

**Sleeveless Green Three-Quarter-Length Dress
Standard Machine Knitting Pattern - Tuck Rib**

----- New section -----

Pick up 47

R651: K2, (NWP, K3, NWP, K1, T1, K1) five times; K5.

When knitting the next row: Dec 1 sts at left.

R652: K5, NWP, K1, (T1, K1, NWP, K3, NWP, K1) four times; T1, K6.

When knitting the next row: Dec 1 sts at left, Dec 6 sts at right.

R653: K1, (K3, NWP) eight times; K6.

When knitting the next row: Dec 1 sts at left.

R654: K1, (T1, K1, NWP, K3, NWP, K1) four times; K5.

When knitting the next row: Dec 6 sts at right.

R655: K3, (NWP, K3, NWP, K1, T1, K1) three times; K5.

When knitting the next row: Dec 1 sts at left.

R656: K2, (NWP, K3, NWP, K1, T1, K1) three times; K5.

When knitting the next row: Dec 1 sts at left, Dec 5 sts at right.

R657: K25.

When knitting the next row: Dec 1 sts at left.

R658: K24.

Cast off remainder.

End of piece.