

www.knittitude.com

Romanian Traditional Inspired Sleeveless Blouse
Standard Knitting Machine Pattern
S, M Sizes



www.knittitude.com
Romanian Traditional Inspired Sleeveless Blouse
Standard Knitting Machine Pattern
S, M Sizes



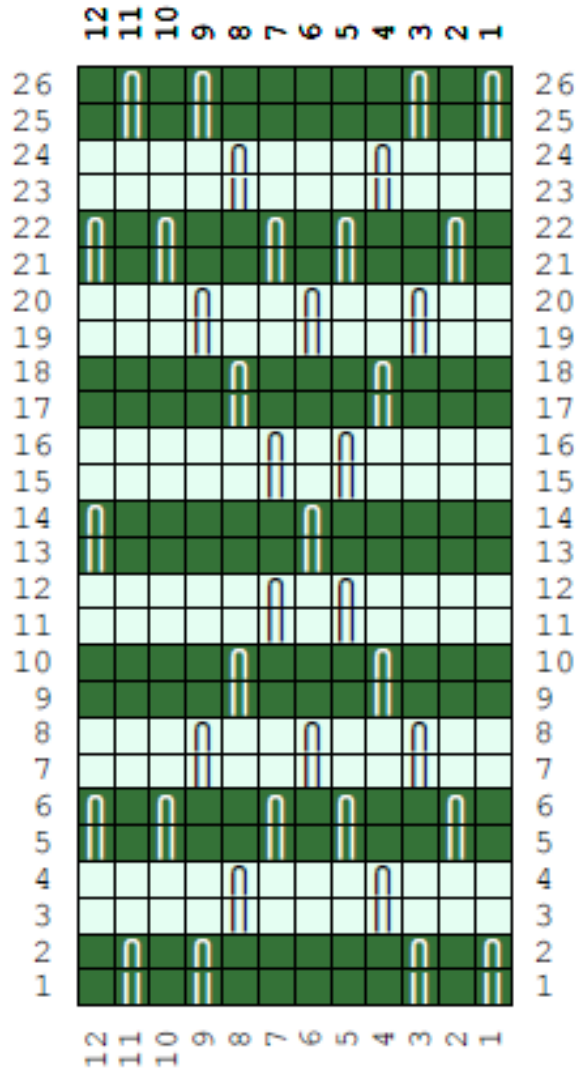
This is how the stitch pattern looks sideway.

www.knittitude.com
Romanian Traditional Inspired Sleeveless Blouse
Standard Knitting Machine Pattern
S, M Sizes

This blouse was knitted sideways on my [Silver Reed SK 840](#) .

To be able to knit this pattern you need a standard (4.5mm) knitting machine. You need to know how to knit sideways, do shortrows and Tuck.

The Stitch Pattern Symbols and Instructions



Symbol	Abbreviation
(blank)	Knit
	Tuck
∩	Tuck
Abbreviation	Knitting instruction
K	Knit.
T	Tuck.
WS	Wrong Side

www.knittitude.com
Romanian Traditional Inspired Sleeveless Blouse
Standard Knitting Machine Pattern
S, M Sizes

R1: (WS) (T1, K1) twice; K3, (K1, T1) twice; K1.
R2: As row 1.
R3: K2, (K1, T1, K2) twice; K2.
R4: As row 3.
R5: K1, (T1, K2, T1, K1) twice; T1.
R6: As row 5.
R7: K1, (K1, T1, K1) three times; K2.
R8: As row 7.
R9: K2, (K1, T1, K2) twice; K2.
R10: As row 9.
R11: K4, (T1, K1) twice; K4.
R12: As row 11.
R13: (K5, T1) twice.
R14: As row 13.
R15: K4, (T1, K1) twice; K4.
R16: As row 15.
R17: K2, (K1, T1, K2) twice; K2.
R18: As row 17.
R19: K1, (K1, T1, K1) three times; K2.
R20: As row 19.
R21: K1, (T1, K2, T1, K1) twice; T1.
R22: As row 21.
R23: K2, (K1, T1, K2) twice; K2.
R24: As row 23.
R25: (T1, K1) twice; K3, (K1, T1) twice; K1.
R26: As row 25.

I used 5 strands of very thin (lace) light and medium green cotton yarn.
The blouse weights 250g (8.82oz).

Stitch Pattern Gauge Swatch with **Tension 6, Stitch Dial 5** (the measurements were taken after the swatch was steamed and washed):

- 33.90 Stitches & 57.14 Rows per 10 cm (4 in).
- Or
- Width of 40 stitches - 11.8 cm (4.6 in);
- Height of 60 rows - 10.5 cm (4.1 in).

www.knittitude.com
 Romanian Traditional Inspired Sleeveless Blouse
 Standard Knitting Machine Pattern
 S, M Sizes

The Stitch Pattern Template

26		■		■	■	■	■	■		■		■
25		■		■	■	■	■	■		■		■
24	■	■	■	■	■	■	■	■	■	■	■	■
23	■	■	■	■	■	■	■	■	■	■	■	■
22	■	■	■	■	■	■	■	■	■	■	■	■
21	■	■	■	■	■	■	■	■	■	■	■	■
20	■	■	■	■	■	■	■	■	■	■	■	■
19	■	■	■	■	■	■	■	■	■	■	■	■
18	■	■	■	■	■	■	■	■	■	■	■	■
17	■	■	■	■	■	■	■	■	■	■	■	■
16	■	■	■	■	■	■	■	■	■	■	■	■
15	■	■	■	■	■	■	■	■	■	■	■	■
14	■	■	■	■	■	■	■	■	■	■	■	■
13	■	■	■	■	■	■	■	■	■	■	■	■
12	■	■	■	■	■	■	■	■	■	■	■	■
11	■	■	■	■	■	■	■	■	■	■	■	■
10	■	■	■	■	■	■	■	■	■	■	■	■
9	■	■	■	■	■	■	■	■	■	■	■	■
8	■	■	■	■	■	■	■	■	■	■	■	■
7	■	■	■	■	■	■	■	■	■	■	■	■
6	■	■	■	■	■	■	■	■	■	■	■	■
5	■	■	■	■	■	■	■	■	■	■	■	■
4	■	■	■	■	■	■	■	■	■	■	■	■
3	■	■	■	■	■	■	■	■	■	■	■	■
2	■	■	■	■	■	■	■	■	■	■	■	■
1	■	■	■	■	■	■	■	■	■	■	■	■

Legend:

R - row

K - knit (ex: K50 - knit 50 stitches)

Sts - stitches

Dec - decrease

Inc - inscrease

LN - left needle

RN - right needle.

SR - shortrow

Carriage at right. Set RC to 0.

www.knittitude.com
Romanian Traditional Inspired Sleeveless Blouse
Standard Knitting Machine Pattern
S, M Sizes

Size S

This part is identical for both Front and Back:

Will be used LN93..RN93 needles.
Cast on 7 sts LN87..LN81.
R1: K7.
R2: As row 1.
When knitting the next row: Inc 6 sts at right.
R3: K13.
When knitting the next row: Inc 1 sts at left.
R4: K14.
When knitting the next row: Inc 7 sts at right.
R5: K21.
R6: As row 5 (without the shaping).
When knitting the next row: Inc 6 sts at right.
R7: K27.
When knitting the next row: Inc 1 sts at left.
R8: K28.
When knitting the next row: Inc 7 sts at right.
R9: K35.
R10: As row 9 (without the shaping).
When knitting the next row: Inc 1 sts at left, Inc 6 sts at right.
R11: K42.
R12: As row 11 (without the shaping).
When knitting the next row: Inc 7 sts at right.
R13: K49.
When knitting the next row: Inc 1 sts at left.
R14: K50.
When knitting the next row: Inc 6 sts at right.
R15: K56.
R16: As row 15 (without the shaping).
When knitting the next row: Inc 7 sts at right.
R17: K63.
When knitting the next row: Inc 1 sts at left.
R18: K64.
When knitting the next row: Inc 7 sts at right.
R19: K71.
R20: As row 19 (without the shaping).
When knitting the next row: Inc 1 sts at left, Inc 6 sts at right.
R21: K78.
R22: As row 21 (without the shaping).
When knitting the next row: Inc 7 sts at right.
R23: K85.
R24: As row 23 (without the shaping).
When knitting the next row: Inc 6 sts at right.
R25: K91.
R26: As row 25 (without the shaping).
When knitting the next row: Inc 7 sts at right.
R27: K98.
R28: As row 27 (without the shaping).
When knitting the next row: Inc 6 sts at right.
R29: K104.
R30: As row 29 (without the shaping).
When knitting the next row: Inc 7 sts at right.

www.knittitude.com
Romanian Traditional Inspired Sleeveless Blouse
Standard Knitting Machine Pattern
S, M Sizes

R31: K111.

R32: As row 31 (without the shaping).

When knitting the next row: Inc 6 sts at right.

R33: K117.

R34: As row 33 (without the shaping) LN93..RN24.

When knitting the next row: e-wrap RN25..RN93.

***Rows 35-40: K186 LN93..RN93.**

When knitting the next row: hold LN93..RN24.

SR1: K69 (RN93..RN25), put the yarn strand in front of the RN24 (which is on hold) in order not to form a hole in the garment.

SR2: K69 (RN25..RN93).

When knitting the next row: set the carriage to knit the hold needles too, or unhold the needles, whichever your prefer.

**Follow the instruction above for shortrows.*

Rows 41-46: K186.

SR 1-2: K69.

Rows 47-48: K186.

When knitting the next row: Dec 1 sts at left.

Rows 49-51: K185.

When knitting the next row: Dec 1 sts at left.

R52: K184.

SR 1-2: K69.

Rows 53-55: K184.

When knitting the next row: Dec 1 sts at left.

Rows 56-58: K183.

SR 1-2: K69.

R59: K183

When knitting the next row: Dec 1 sts at left.

Rows 60-63: K182.

When knitting the next row: Dec 1 sts at left.

R64: K181.

SR 1-2: K69.

***Rows 65-70: K181.**

SR 1-2: K69.

Repeat * for sequences (71-76; 77-82; 83-88; 89-94).

Front:

R95: K181.

R96: [(K1, T1) twice; K4, (K1, T1) twice] 15 times; K1.

R97: As row 96.

R98: [K1, (K3, T1) twice; K3] 15 times; K1.

R99: As row 98.

R100: *[(T1, K1) twice; K1] twice; T1, K1, * Repeat from * to * 15 times; T1.

R101: As row 100.

R102: [K1, (K2, T1) three times; K2] 15 times; K1.

R103: As row 102.

R104: [K1, (K3, T1) twice; K3] 15 times; K1.

R105: As row 104.

R106: [K4, (K1, T1) twice; K4] 15 times; K1.

R107: As row 106.

www.knittitude.com
Romanian Traditional Inspired Sleeveless Blouse
Standard Knitting Machine Pattern
S, M Sizes

R108: (T1, K5) 30 times; T1.
When knitting the next row: Dec 1 sts at left.
R109: (K5, T1) 30 times.
R110: [K3, (K1, T1) twice; K5] 15 times.
R111: As row 110.
R112: [(K3, T1) twice; K4] 15 times.
R113: As row 112.
R114: [(K2, T1) three times; K3] 15 times.
R115: As row 114.
R116: [K1, (T1, K2, T1, K1) twice; T1] 15 times.
R117: As row 116.
R118: [(K3, T1) twice; K4] 15 times.
R119: As row 118.
R120: [(T1, K1) twice; K3, (K1, T1) twice; K1] 15 times.
R121: As row 120.
R122: K180.
SR 1-2: K69.
Rows 123-125: K180.
When knitting the next row: Dec 7 sts at left.
Rows 126-127: K173.
When knitting the next row: Dec 6 sts at left.
R128: K167.
SR 1-2: K69.
R129: K167.
When knitting the next row: Dec 6 sts at left.
Rows 130-131: K161.
When knitting the next row: Dec 6 sts at left.
Rows 132-133: K155.
When knitting the next row: Dec 6 sts at left.
R134: K149.
SR 1-2: K69.
R135: As row 134.
When knitting the next row: Inc 5 sts at left.
Rows 136-137: K154.
When knitting the next row: Inc 5 sts at left.
Rows 138-139: K159.
When knitting the next row: Inc 5 sts at left.
R140: K164.
SR 1-2: K69.
R141: K164.
When knitting the next row: Inc 5 sts at left.
Rows 142-143: K169.
When knitting the next row: Inc 5 sts at left.
Rows 144-145: K174.
When knitting the next row: Inc 6 sts at left.
R146: K180.
SR 1-2: K69.
Rows 147-148: K180.
SR 1-2: K69.
R149: K180
R150: [(T1, K1) twice; K3, (K1, T1) twice; K1] 15 times.
R151: As row 150.
R152: [(K3, T1) twice; K4] 15 times.
R153: As row 152.
R154: [K1, (T1, K2, T1, K1) twice; T1] 15 times.
R155: As row 154.
R156: [(K2, T1) three times; K3] 15 times.
R157: As row 156.

www.knittitude.com
Romanian Traditional Inspired Sleeveless Blouse
Standard Knitting Machine Pattern
S, M Sizes

R158: [(K3, T1) twice; K4] 15 times.
R159: As row 158.
R160: [K3, (K1, T1) twice; K5] 15 times.
When knitting the next row: Inc 1 sts at left.
R161: [K4, (K1, T1) twice; K4] 15 times; K1.
R162: (T1, K5) 30 times; T1.
R163: As row 162.
R164: [K4, (K1, T1) twice; K4] 15 times; K1.
R165: As row 164.
R166: [K1, (K3, T1) twice; K3] 15 times; K1.
R167: As row 166.
R168: [K1, (K2, T1) three times; K2] 15 times; K1.
R169: As row 168.
R170: *[(T1, K1) twice; K1] twice; T1, K1, * Repeat from * to * 15 times;
T1.
R171: As row 170.
R172: [K1, (K3, T1) twice; K3] 15 times; K1.
R173: As row 172.
R174: [(K1, T1) twice; K4, (K1, T1) twice] 15 times; K1.
R175: As row 174.
Rows 176-178: K181.
SR 1-2: K69.

Back:

Rows 95-100: K181.
SR 1-2: K69.
Rows 101-106: K181.
SR 1-2: K69.
Rows 107-108: K181.
When knitting the next row: Dec 1 sts at left.
Rows 109-112: K180.
SR 1-2: K69.

***Rows 113-118: K180.**
SR 1-2: K69.

Repeat * for sequences (119-124; 125-130; 131-136; 137-142; 143-148; 149-154; 155-160).

When knitting the next row: Inc 1 sts at left.

***Rows 161-166: K181.**
SR 1-2: K69.

Repeat * for sequences (167-172; 173-178).

This part is identical for both Front and Back:

***Rows 179-184: K181.**
SR 1-2: K69.

Repeat * for sequences (185-190; 191-196; 197-202).

Rows 203-205: K181.
When knitting the next row: Inc 1 sts at left.
Rows 206-208: K182.
SR 1-2: K69.

www.knittitude.com
Romanian Traditional Inspired Sleeveless Blouse
Standard Knitting Machine Pattern
S, M Sizes

Rows 207-209: K182.
When knitting the next row: Inc 1 sts at left.
Rows 210-213: K183.
When knitting the next row: Inc 1 sts at left.
R214: K184.
 SR 1-2: K69.
Rows 215-217: K184.
When knitting the next row: Inc 1 sts at left.
Rows 218-220: K185.
 SR 1-2: K69.
When knitting the next row: Inc 1 sts at left.
Rows 221-226: K186.
 SR 1-2: K69.
Rows 227-232: K186.
 SR 1-2: K69.
Rows 233-234: K186.
 SR 1-2: K69.
When knitting the next row: cast off RN25-RN93.
R235: K117 LN93..RN24.
R236: As row 235.
When knitting the next row: Dec 6 sts at right.
R237: K111.
R238: As row 237 (without the shaping).
When knitting the next row: Dec 7 sts at right.
R239: K104.
R240: As row 239 (without the shaping).
When knitting the next row: Dec 6 sts at right.
R241: K98.
R242: As row 241 (without the shaping).
When knitting the next row: Dec 7 sts at right.
R243: K91.
R244: As row 243 (without the shaping).
When knitting the next row: Dec 6 sts at right.
R245: K85.
R246: As row 245 (without the shaping).
When knitting the next row: Dec 7 sts at right.
R247: K78.
R248: As row 247 (without the shaping).
When knitting the next row: Dec 1 sts at left, Dec 6 sts at right.
R249: K71.
R250: As row 249.
When knitting the next row: Dec 7 sts at right.
R251: K64.
When knitting the next row: Dec 1 sts at left.
R252: K63.
When knitting the next row: Dec 7 sts at right.
R253: K56.
R254: As row 253 (without the shaping).
When knitting the next row: Dec 6 sts at right.
R255: K50.
When knitting the next row: Dec 1 sts at left.
R256: K49.
When knitting the next row: Dec 7 sts at right.
R257: K42.
R258: As row 257 (without the shaping).
When knitting the next row: Dec 1 sts at left, Dec 6 sts at right.
R259: K35.
R260: As row 259 (without the shaping).

www.knittitude.com
Romanian Traditional Inspired Sleeveless Blouse
Standard Knitting Machine Pattern
S, M Sizes

When knitting the next row: Dec 7 sts at right.
R261: K28.
When knitting the next row: Dec 1 sts at left.
R262: K27.
When knitting the next row: Dec 6 sts at right.
R263: K21.
R264: As row 263 (without the shaping).
When knitting the next row: Dec 7 sts at right.
R265: K14.
When knitting the next row: Dec 1 sts at left.
R266: K13.
When knitting the next row: Dec 6 sts at right.
R267: K7.
R268: As row 267 (without the shaping).
Cast off remainder. End of piece.

Size M

This part is identical for both Front and Back:

Will be used LN98..RN99 needles.
Cast on 7 sts LN91..LN85.
R1: K7.
R2: As row 1.
When knitting the next row: Inc 6 sts at right.
R3: K13.
When knitting the next row: Inc 1 sts at left.
R4: K14.
When knitting the next row: Inc 7 sts at right.
R5: K21.
R6: As row 5 (without the shaping).
When knitting the next row: Inc 1 sts at left, Inc 6 sts at right.
R7: K28.
R8: As row 7 (without the shaping).
When knitting the next row: Inc 7 sts at right.
R9: K35.
When knitting the next row: Inc 1 sts at left.
R10: K36.
When knitting the next row: Inc 6 sts at right.
R11: K42.
R12: As row 11 (without the shaping).
When knitting the next row: Inc 1 sts at left, Inc 7 sts at right.
R13: K50.
R14: As row 13 (without the shaping).
When knitting the next row: Inc 6 sts at right.
R15: K56.
When knitting the next row: Inc 1 sts at left.
R16: K57.
When knitting the next row: Inc 7 sts at right.
R17: K64.
R18: As row 17 (without the shaping).
When knitting the next row: Inc 1 sts at left, Inc 6 sts at right.
R19: K71.
R20: As row 19 (without the shaping).
When knitting the next row: Inc 7 sts at right.

www.knittitude.com
Romanian Traditional Inspired Sleeveless Blouse
Standard Knitting Machine Pattern
S, M Sizes

R21: K78.
When knitting the next row: Inc 1 sts at left.
R22: K79.
When knitting the next row: Inc 6 sts at right.
R23: K85.
R24: As row 23 (without the shaping).
When knitting the next row: Inc 7 sts at right.
R25: K92.
R26: As row 25 (without the shaping).
When knitting the next row: Inc 6 sts at right.
R27: K98.
R28: As row 27 (without the shaping).
When knitting the next row: Inc 7 sts at right.
R29: K105.
R30: As row 29 (without the shaping).
When knitting the next row: Inc 6 sts at right.
R31: K111.
R32: As row 31 (without the shaping).
When knitting the next row: Inc 7 sts at right.
R33: K118.
R34: As row 33 (without the shaping).
When knitting the next row: Inc 6 sts at right.
R35: K124.
R36: As row 35 (without the shaping) LN98..RN26.
When knitting the next row: e-wrap RN27..RN99.

***Rows 37-42: K197 LN98..RN99.**

When knitting the next row: hold LN98..RN26.

SR1: K73 (RN99..RN27), put the yarn strand in front of the RN26 (which is on hold) in order not to form a hole in the garment.

SR2: K73 (RN27..RN99).

When knitting the next row: set the carriage to knit the hold needles too, or unhold the needles, whichever you prefer.

**Follow the instruction above for shortrows.*

Rows 43-48: K197.
SR 1-2: K73.
Rows 49-51: K197.
When knitting the next row: Dec 1 sts at left.
Rows 52-54: K196.
SR 1-2: K73.
When knitting the next row: Dec 1 sts at left.
Rows 55-58: K195.
When knitting the next row: Dec 1 sts at left.
Rows 59-60: K194.
SR 1-2: K73.
Rows 61-62: K194.
When knitting the next row: Dec 1 sts at left.
Rows 63-66: K193.
SR 1-2: K73.
When knitting the next row: Dec 1 sts at left.

***Rows 67-72: K192.**

SR 1-2: K73.

Repeat * for sequences (73-78; 79-84; 85-90; 91-96).

www.knittitude.com
Romanian Traditional Inspired Sleeveless Blouse
Standard Knitting Machine Pattern
S, M Sizes

Front:

Rows 97-100: K192
R101: [(T1, K1) twice; K3, (K1, T1) twice; K1] 16 times.
R102: As row 101.
R103: [(K3, T1) twice; K4] 16 times.
R104: As row 103.
R105: [K1, (T1, K2, T1, K1) twice; T1] 16 times.
R106: As row 105.
R107: [(K2, T1) three times; K3] 16 times.
R108: As row 107.
R109: [(K3, T1) twice; K4] 16 times.
R110: As row 109.
R111: [K3, (K1, T1) twice; K5] 16 times.
Rows 112-113: As row 111.
R114: (K5, T1) 32 times.
R115: As row 114.
When knitting the next row: Dec 1 sts at left.
R116: K3, T1, K1, (T1, K9, T1, K1) 15 times; T1, K5.
R117: As row 116 (without the shaping).
R118: K2, T1, K2, (K1, T1, K7, T1, K2) 15 times; K1, T1, K4.
R119: As row 118.
R120: K1, T1, K2, T1, [K2, T1, K3, (K2, T1) twice] 15 times; K2, T1, K3.
R121: As row 120.
R122: T1, K1, (K1, T1) twice; [K1, (K1, T1) twice; (K1, T1, K1) twice; T1] 15 times; K1, (K1, T1) twice.
R123: As row 122.
R124: K2, T1, K2, (K1, T1, K7, T1, K2) 15 times; K1, T1, K4.
R125: As row 124.
R126: K1, T1, K3, [K1, (K1, T1) four times; K3] 15 times; K1, (K1, T1) twice; K1.
R127: As row 126.
Rows 128-131: K191.
When knitting the next row: Dec 6 sts at left.
Rows 132-133: K185.
SR 1-2: K73.
When knitting the next row: Dec 6 sts at left.
Rows 134-135: K179.
When knitting the next row: Dec 6 sts at left.
Rows 136-137: K173.
When knitting the next row: Dec 5 sts at left.
Rows 138-139: K168.
SR 1-2: K73.
When knitting the next row: Dec 5 sts at left.
Rows 140-141: K163.
When knitting the next row: Dec 5 sts at left.
Rows 142-143: K158.
When knitting the next row: Inc 5 sts at left.
Rows 144-145: K163.
SR 1-2: K73.
When knitting the next row: Inc 5 sts at left.
Rows 146-147: K168.
When knitting the next row: Inc 5 sts at left.
Rows 148-149: K173.
When knitting the next row: Inc 6 sts at left.
Rows 150-151: K179.

www.knittitude.com
Romanian Traditional Inspired Sleeveless Blouse
Standard Knitting Machine Pattern
S, M Sizes

SR 1-2: K73.
When knitting the next row: Inc 6 sts at left.
Rows 152-153: K185.
When knitting the next row: Inc 6 sts at left.
Rows 154-157: K191.
SR 1-2: K73.
R158: K1, T1, K3, [K1, (K1, T1) four times; K3] 15 times; K1, (K1, T1) twice; K1.
R159: As row 158.
R160: K2, T1, K2, (K1, T1, K7, T1, K2) 15 times; K1, T1, K4.
R161: As row 160.
R162: T1, K1, (K1, T1) twice; [K1, (K1, T1) twice; (K1, T1, K1) twice; T1] 15 times; K1, (K1, T1) twice.
R163: As row 162.
R164: K1, T1, K2, T1, [K2, T1, K3, (K2, T1) twice] 15 times; K2, T1, K3.
R165: As row 164.
R166: K2, T1, K2, (K1, T1, K7, T1, K2) 15 times; K1, T1, K4.
R167: As row 166.
R168: K3, T1, K1, (T1, K9, T1, K1) 15 times; T1, K5.
R169: As row 168.
When knitting the next row: Inc 1 sts at left.
R170: (K5, T1) 32 times.
R171: As row 170 (without the shaping).
R172: [K3, (K1, T1) twice; K5] 16 times.
Rows 173-174: As row 172.
R175: [(K3, T1) twice; K4] 16 times.
R176: As row 175.
R177: [(K2, T1) three times; K3] 16 times.
R178: As row 177.
R179: [K1, (T1, K2, T1, K1) twice; T1] 16 times.
R180: As row 179.
R181: [(K3, T1) twice; K4] 16 times.
R182: As row 181.
R183: [(T1, K1) twice; K3, (K1, T1) twice; K1] 16 times.
R184: As row 183.
Rows 185-186: K192.

Back:

***Rows 97-102: K192.**

SR 1-2: K73.

Repeat * for sequences (103-108; 109-114).

R115: K192.

When knitting the next row: Dec 1 sts at left.

***Rows 116-120: K191.**

SR 1-2: K73.

Repeat * for sequences (121-126; 127-132; 133-138; 139-144; 145-150; 151-156; 157-162; 163-168).

R169: K191.

When knitting the next row: Inc 1 sts at left.

***Rows 170-174: K192.**

SR 1-2: K73.

Repeat * for sequences (175-180; 181-186).

www.knittitude.com
Romanian Traditional Inspired Sleeveless Blouse
Standard Knitting Machine Pattern
S, M Sizes

This part is identical for both Front and Back:

***Rows 187-192: K192.**

SR 1-2: K73.

Repeat * for sequences (193-198; 199-204; 205-210; 211-216).

Rows 217-218: K192.

When knitting the next row: Inc 1 sts at left.

Rows 219-222: K193.

SR 1-2: K73.

When knitting the next row: Inc 1 sts at left.

Rows 223-226: K194.

When knitting the next row: Inc 1 sts at left.

Rows 227-228: K195.

SR 1-2: K73.

Rows 229-230: K195.

When knitting the next row: Inc 1 sts at left.

Rows 231-233: K196.

When knitting the next row: Inc 1 sts at left.

R234: K197.

SR 1-2: K73.

Rows 235-240: K197.

SR 1-2: K73.

Rows 241-246: K197.

SR 1-2: K73.

Rows 247-248: K197.

SR 1-2: K73.

When knitting the next row: cast off RN27-RN99.

R249: K124.

R250: As row 249.

When knitting the next row: Dec 6 sts at right.

R251: K118.

R252: As row 251 (without the shaping).

When knitting the next row: Dec 7 sts at right.

R253: K111.

R254: As row 253 (without the shaping).

When knitting the next row: Dec 6 sts at right.

R255: K105.

R256: As row 255 (without the shaping).

When knitting the next row: Dec 7 sts at right.

R257: K98.

R258: As row 257 (without the shaping).

When knitting the next row: Dec 6 sts at right.

R259: K92.

R260: As row 259 (without the shaping).

When knitting the next row: Dec 7 sts at right.

R261: K85.

R262: As row 261 (without the shaping).

When knitting the next row: Dec 6 sts at right.

R263: K79.

When knitting the next row: Dec 1 sts at left.

R264: K78.

When knitting the next row: Dec 7 sts at right.

R265: K71.

R266: As row 265 (without the shaping).

www.knittitude.com
Romanian Traditional Inspired Sleeveless Blouse
Standard Knitting Machine Pattern
S, M Sizes

When knitting the next row: Dec 1 sts at left, Dec 6 sts at right.
R267: K64.
R268: As row 267 (without the shaping).
When knitting the next row: Dec 7 sts at right.
R269: K57.
When knitting the next row: Dec 1 sts at left.
R270: K56.
When knitting the next row: Dec 6 sts at right.
R271: K50.
R272: As row 271 (without the shaping).
When knitting the next row: Dec 1 sts at left, Dec 7 sts at right.
R273: K42.
R274: As row 273 (without the shaping).
When knitting the next row: Dec 6 sts at right.
R275: K36.
When knitting the next row: Dec 1 sts at left.
R276: K35.
When knitting the next row: Dec 7 sts at right.
R277: K28.
R278: As row 277 (without the shaping).
When knitting the next row: Dec 1 sts at left, Dec 6 sts at right.
R279: K21.
R280: As row 279 (without the shaping).
When knitting the next row: Dec 7 sts at right.
R281: K14.
When knitting the next row: Dec 1 sts at left.
R282: K13.
When knitting the next row: Dec 6 sts at right.
R283: K7.
R284: As row 283 (without the shaping).
Cast off remainder. End of piece.

Neck Cords

Put the Front on the machine with wrong side facing you, at neck where the cord is suppose to be (see the picture), on 3 needles. Set carriage to Circular Knitting and knit 120 rows (in actuality, only 60 rows are knitted, the other 60 are returns without knitting). Cast off. Do this for the other side too.

Sew the front and back together using the Mattress Stitch Seam method and steam the blouse horizontally using a garment steamer. Let the blouse sit horizontally for 24 hours to make sure it dries before wearing it.

If you have any questions, feel free to contact me at [**info@knittitude.com**](mailto:info@knittitude.com).

Thank you for your interest in my pattern:

<http://knittitude.com/romanian-traditional-inspired-sleeveless-blouse-machine-knitting-pattern/>

Happy Knitting,

Nicoleta Ganea