

www.knittitude.com

Short Tight Purple Skirt
Standard Knitting Machine Pattern – Tuck
S, M, L, XL Sizes



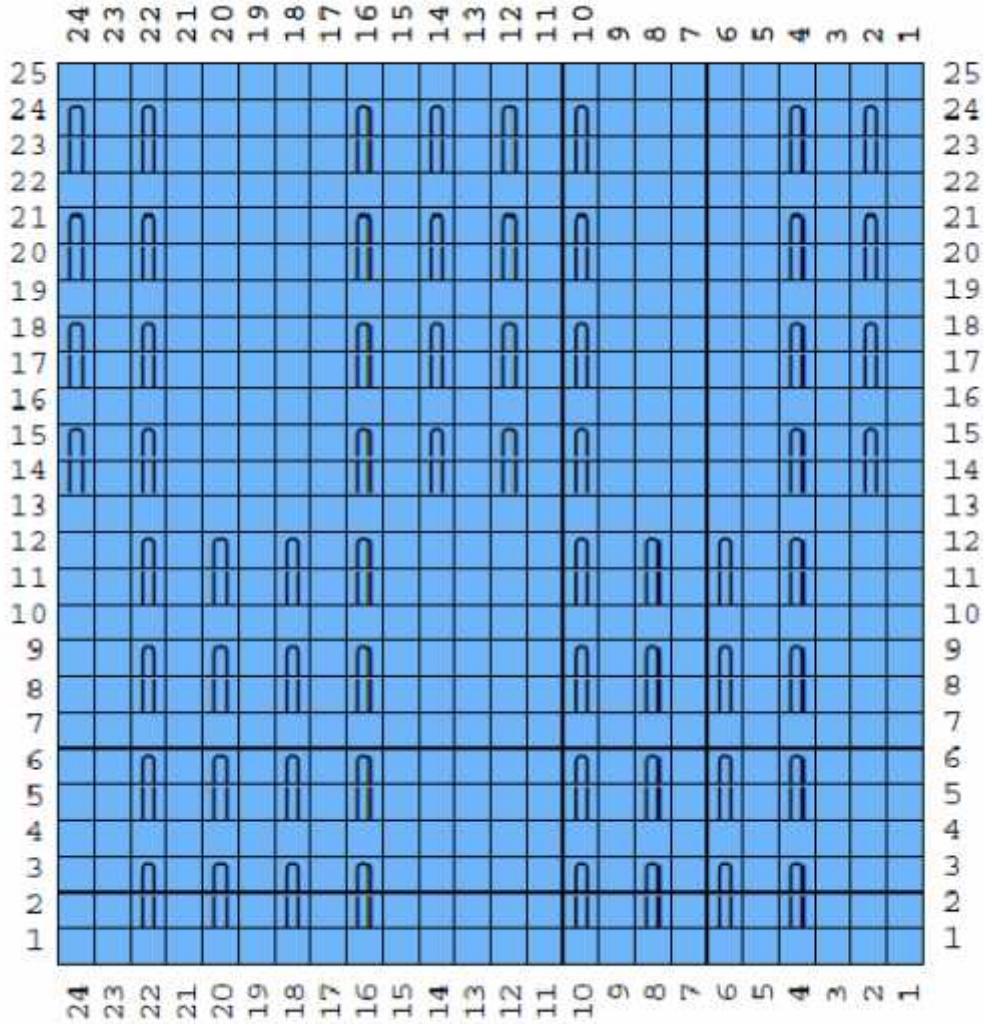
www.knittitude.com

Short Tight Purple Skirt
Standard Knitting Machine Pattern – Tuck
S, M, L, XL Sizes



Short Tight Purple Skirt
 Standard Knitting Machine Pattern – Tuck
 S, M, L, XL Sizes

The Stitch Pattern Symbols



Symbol

Abbreviation

(blank)

Knit

||

Tuck

∩

Tuck

www.knittitude.com
Short Tight Purple Skirt
Standard Knitting Machine Pattern – Tuck
S, M, L, XL Sizes

Stitch Pattern Text

Abbreviation	Knitting instruction
K	Knit.
T	Tuck.
WS	Wrong Side.

R1: (WS) K24.
R2: [K2, (K1, T1) four times; K2] twice.
R3: As row 2.
R4: K24.
R5: [K2, (K1, T1) four times; K2] twice.
R6: As row 5.
R7: K24.
R8: [K2, (K1, T1) four times; K2] twice.
R9: As row 8.
R10: K24.
R11: [K2, (K1, T1) four times; K2] twice.
R12: As row 11.
R13: K24.
R14: [(K1, T1) twice; K4, (K1, T1) twice] twice.
R15: As row 14.
R16: K24.
R17: [(K1, T1) twice; K4, (K1, T1) twice] twice.
R18: As row 17.
R19: K24.
R20: [(K1, T1) twice; K4, (K1, T1) twice] twice.
R21: As row 20.
R22: K24.
R23: [(K1, T1) twice; K4, (K1, T1) twice] twice.
R24: As row 23.
R25: K24.

I used 4 strands of very thin purple mercerized cotton yarn.

Stitch Pattern gauge Swatch with **Tension 7, Stitch Dial 6:**

- 25.97 Stitches & 70.59 Rows per 10 cm (4 in).
- Or
- Width of 40 stitches - 15.4 cm (6.1 in);
- Height of 60 rows - 8.5 cm (3.3 in).

K1 P1 Rib gauge Swatch with **Tension 7, Stitch Dial 6:**

- w: 7.8cm (3.1 in); h: 14.4cm (5.7 in).

The skirt was knitted on my [Silver Reed SK 840](#) , standard electronic knitting machine, using main bed and [ribber SRP 60N](#) (for the welts).

To be able to knit this pattern you need a standard (4.5mm) knitting machine and ribber. You need to know how to knit K1 P1 Rib (check your knitting machine manual).

www.knittitude.com
Short Tight Purple Skirt
Standard Knitting Machine Pattern – Tuck
S, M, L, XL Sizes

This skirt was knitted upside down from 2 identical panels, starting with the K1 P1 Rib for the waist hem, then the stitch pattern and ending with the bottom, again K1 P1 Rib.

Hem and Bottom Instructions

Start doing the usual K1 P1 Rib on waste yarn, then knit 1 row with the ravel cord and change with the main yarn. After the indicated number of rows (**this depends on each size instructions but make sure you finish with the Carriage at right, if necessary, knit one more row**), transfer the stitches from the ribber to the main bed on the corresponding empty needles and put the stitches from the ravel cord on the main bed too, therefore on the main bed you will have 2 stitches on each needle. Set the Stitch Dial to 10 and knit one row. Consider this row as the row 1 (R1) from the pattern instructions. Set the Stitch Dial back to 6. I did not put any elastic inside the hem.

For the bottom, transfer the necessary stitches from main bed to the ribber, knit the indicated number of rows and cast off using your preferred method.

Legend:

R - row

K - knit (ex: K50 - knit 50 stitches)

Sts - stitches

Dec - decrease

Inc - inscrease

Size S

Hem:

Circular cast on 90 sts, LN45..RN45, for the K1 P1 Rib. Read the **Hem and Bottom Instructions** written before starting the instructions for each size. Knit 42 rows of K1 P1 Rib and join the hem.

Panel:

Set RC to 1 (not 0), the first row is the one that joined the hem together, therefore follow the instructions from R2.

Rows 2-7: K90.

When knitting the next row: Inc 1 sts at left, Inc 1 sts at right.

R8: K92.

Rows 9-14: As row 8 (without the shaping).

When knitting the next row: Inc 1 sts at left, Inc 1 sts at right.

R15: K94.

Rows 16-22: As row 15 (without the shaping).

www.knittitude.com
Short Tight Purple Skirt
Standard Knitting Machine Pattern – Tuck
S, M, L, XL Sizes

When knitting the next row: Inc 1 sts at left, Inc 1 sts at right.
R23: K96.
Rows 24-30: As row 23 (without the shaping).
When knitting the next row: Inc 1 sts at left, Inc 1 sts at right.
R31: K98.
Rows 32-38: As row 31 (without the shaping).
When knitting the next row: Inc 1 sts at left, Inc 1 sts at right.
R39: K100.
Rows 40-46: As row 39 (without the shaping).
When knitting the next row: Inc 1 sts at left, Inc 1 sts at right.
R47: K102.
Rows 48-54: As row 47 (without the shaping).
When knitting the next row: Inc 1 sts at left, Inc 1 sts at right.
R55: K104.
Rows 56-62: As row 55 (without the shaping).
When knitting the next row: Inc 1 sts at left, Inc 1 sts at right.
R63: K106.
Rows 64-70: As row 63 (without the shaping).
When knitting the next row: Inc 1 sts at left, Inc 1 sts at right.
R71: K108.
Rows 72-78: As row 71 (without the shaping).
When knitting the next row: Inc 1 sts at left, Inc 1 sts at right.
R79: K110.
Rows 80-86: As row 79 (without the shaping).
When knitting the next row: Inc 1 sts at left, Inc 1 sts at right.
R87: K112.
Rows 88-94: As row 87 (without the shaping).
When knitting the next row: Inc 1 sts at left, Inc 1 sts at right.
R95: K114.
Rows 96-102: As row 95 (without the shaping).
When knitting the next row: Inc 1 sts at left, Inc 1 sts at right.
R103: K116.
Rows 104-110: As row 103 (without the shaping).
When knitting the next row: Inc 1 sts at left, Inc 1 sts at right.
R111: K118.
Rows 112-138: As row 111 (without the shaping).
When knitting the next row: Dec 1 sts at left, Dec 1 sts at right.
R139: K116.
Rows 140-164: As row 139 (without the shaping).
When knitting the next row: Dec 1 sts at left, Dec 1 sts at right.
R165: K114.
Rows 166-189: As row 165 (without the shaping).
When knitting the next row: Dec 1 sts at left, Dec 1 sts at right.
R190: K112.
Rows 191-214: As row 190 (without the shaping).
When knitting the next row: Dec 1 sts at left, Dec 1 sts at right.
R215: K110.
Rows 216-239: As row 215 (without the shaping).
When knitting the next row: Dec 1 sts at left, Dec 1 sts at right.
R240: K108.
Rows 241-264: As row 240 (without the shaping).
When knitting the next row: Dec 1 sts at left, Dec 1 sts at right.
R265: K106.
Rows 266-289: As row 265 (without the shaping).
Cast off remainder. End of piece.

Bottom:

www.knittitude.com
Short Tight Purple Skirt
Standard Knitting Machine Pattern – Tuck
S, M, L, XL Sizes

Read the **Hem and Bottom Instructions** written before starting the instructions for each size. Knit 9 rows of K1 P1 Rib and cast off.

Size M

Hem:

Circular cast on 106 sts, LN53..RN53, for the K1 P1 Rib. Read the **Hem and Bottom Instructions** written before starting the instructions for each size. Knit 42 rows of K1 P1 Rib and join the hem.

Skirt:

Set RC to 1 (not 0), the first row is the one that joined the hem together, therefore follow the instructions from R2.

Rows 2-8: K106.

When knitting the next row: Inc 1 sts at left, Inc 1 sts at right.

R9: K108.

Rows 10-17: As row 9 (without the shaping).

When knitting the next row: Inc 1 sts at left, Inc 1 sts at right.

R18: K110.

Rows 19-26: As row 18 (without the shaping).

When knitting the next row: Inc 1 sts at left, Inc 1 sts at right.

R27: K112.

Rows 28-35: As row 27 (without the shaping).

When knitting the next row: Inc 1 sts at left, Inc 1 sts at right.

R36: K114.

Rows 37-44: As row 36 (without the shaping).

When knitting the next row: Inc 1 sts at left, Inc 1 sts at right.

R45: K116.

Rows 46-53: As row 45 (without the shaping).

When knitting the next row: Inc 1 sts at left, Inc 1 sts at right.

R54: K118.

Rows 55-62: As row 54 (without the shaping).

When knitting the next row: Inc 1 sts at left, Inc 1 sts at right.

R63: K120.

Rows 64-71: As row 63 (without the shaping).

When knitting the next row: Inc 1 sts at left, Inc 1 sts at right.

R72: K122.

Rows 73-80: As row 72 (without the shaping).

When knitting the next row: Inc 1 sts at left, Inc 1 sts at right.

R81: K124.

Rows 82-89: As row 81 (without the shaping).

When knitting the next row: Inc 1 sts at left, Inc 1 sts at right.

R90: K126.

Rows 91-98: As row 90 (without the shaping).

When knitting the next row: Inc 1 sts at left, Inc 1 sts at right.

R99: K128.

Rows 100-107: As row 99 (without the shaping).

When knitting the next row: Inc 1 sts at left, Inc 1 sts at right.

R108: K130.

Rows 109-116: As row 108 (without the shaping).

When knitting the next row: Inc 1 sts at left, Inc 1 sts at right.

R117: K132.

Rows 118-148: As row 117 (without the shaping).

www.knittitude.com
Short Tight Purple Skirt
Standard Knitting Machine Pattern – Tuck
S, M, L, XL Sizes

When knitting the next row: Dec 1 sts at left, Dec 1 sts at right.
R149: K130.
Rows 150-178: As row 149 (without the shaping).
When knitting the next row: Dec 1 sts at left, Dec 1 sts at right.
R179: K128.
Rows 180-207: As row 179 (without the shaping).
When knitting the next row: Dec 1 sts at left, Dec 1 sts at right.
R208: K126.
Rows 209-236: As row 208 (without the shaping).
When knitting the next row: Dec 1 sts at left, Dec 1 sts at right.
R237: K124.
Rows 238-265: As row 237 (without the shaping).
When knitting the next row: Dec 1 sts at left, Dec 1 sts at right.
R266: K122.
Rows 267-294: As row 266 (without the shaping).
Cast off remainder. End of piece.

Bottom:

Read the **Hem and Bottom Instructions** written before starting the instructions for each size. Knit 9 rows of K1 P1 Rib and cast off.

Size L

Hem:

Circular cast on 120 sts, LN60..RN60, for the K1 P1 Rib. Read the **Hem and Bottom Instructions** written before starting the instructions for each size. Knit 50 rows of K1 P1 Rib and join the hem.

Skirt:

Set RC to 1 (not 0), the first row is the one that joined the hem together, therefore follow the instructions from R2.

Rows 2-9: K120.
When knitting the next row: Inc 1 sts at left, Inc 1 sts at right.
R10: K122.
Rows 11-18: As row 10 (without the shaping).
When knitting the next row: Inc 1 sts at left, Inc 1 sts at right.
R19: K124.
Rows 20-27: As row 19 (without the shaping).
When knitting the next row: Inc 1 sts at left, Inc 1 sts at right.
R28: K126.
Rows 29-36: As row 28 (without the shaping).
When knitting the next row: Inc 1 sts at left, Inc 1 sts at right.
R37: K128.
Rows 38-45: As row 37 (without the shaping).
When knitting the next row: Inc 1 sts at left, Inc 1 sts at right.
R46: K130.
Rows 47-54: As row 46 (without the shaping).
When knitting the next row: Inc 1 sts at left, Inc 1 sts at right.
R55: K132.
Rows 56-63: As row 55 (without the shaping).
When knitting the next row: Inc 1 sts at left, Inc 1 sts at right.
R64: K134.

www.knittitude.com
Short Tight Purple Skirt
Standard Knitting Machine Pattern – Tuck
S, M, L, XL Sizes

Rows 65-72: As row 64 (without the shaping).
When knitting the next row: Inc 1 sts at left, Inc 1 sts at right.
R73: K136.
Rows 74-82: As row 73 (without the shaping).
When knitting the next row: Inc 1 sts at left, Inc 1 sts at right.
R83: K138.
Rows 84-92: As row 83 (without the shaping).
When knitting the next row: Inc 1 sts at left, Inc 1 sts at right.
R93: K140.
Rows 94-102: As row 93 (without the shaping).
When knitting the next row: Inc 1 sts at left, Inc 1 sts at right.
R103: K142.
Rows 104-112: As row 103 (without the shaping).
When knitting the next row: Inc 1 sts at left, Inc 1 sts at right.
R113: K144.
Rows 114-122: As row 113 (without the shaping).
When knitting the next row: Inc 1 sts at left, Inc 1 sts at right.
R123: K146.
Rows 124-158: As row 123 (without the shaping).
When knitting the next row: Dec 1 sts at left, Dec 1 sts at right.
R159: K144.
Rows 160-187: As row 159 (without the shaping).
When knitting the next row: Dec 1 sts at left, Dec 1 sts at right.
R188: K142.
Rows 189-215: As row 188 (without the shaping).
When knitting the next row: Dec 1 sts at left, Dec 1 sts at right.
R216: K140.
Rows 217-243: As row 216 (without the shaping).
When knitting the next row: Dec 1 sts at left, Dec 1 sts at right.
R244: K138.
Rows 245-271: As row 244 (without the shaping).
When knitting the next row: Dec 1 sts at left, Dec 1 sts at right.
R272: K136.
Rows 273-299: As row 272 (without the shaping).
Cast off remainder. End of piece.

Bottom:

Read the **Hem and Bottom Instructions** written before starting the instructions for each size. Knit 13 rows of K1 P1 Rib and cast off.

Size XL

Hem:

Circular cast on 134 sts, LN67..RN67, for the K1 P1 Rib. Read the **Hem and Bottom Instructions** written before starting the instructions for each size. Knit 50 rows of K1 P1 Rib and join the hem .

Skirt:

www.knittitude.com
Short Tight Purple Skirt
Standard Knitting Machine Pattern – Tuck
S, M, L, XL Sizes

Set RC to 1 (not 0), the first row is the one that joined the hem together, therefore follow the instructions from R2.

Rows 2-9: K134.

When knitting the next row: Inc 1 sts at left, Inc 1 sts at right.

R10: K136.

Rows 11-18: As row 10 (without the shaping).

When knitting the next row: Inc 1 sts at left, Inc 1 sts at right.

R19: K138.

Rows 20-27: As row 19 (without the shaping).

When knitting the next row: Inc 1 sts at left, Inc 1 sts at right.

R28: K140.

Rows 29-36: As row 28 (without the shaping).

When knitting the next row: Inc 1 sts at left, Inc 1 sts at right.

R37: K142.

Rows 38-45: As row 37 (without the shaping).

When knitting the next row: Inc 1 sts at left, Inc 1 sts at right.

R46: K144.

Rows 47-54: As row 46 (without the shaping).

When knitting the next row: Inc 1 sts at left, Inc 1 sts at right.

R55: K146.

Rows 56-63: As row 55 (without the shaping).

When knitting the next row: Inc 1 sts at left, Inc 1 sts at right.

R64: K148.

Rows 65-72: As row 64 (without the shaping).

When knitting the next row: Inc 1 sts at left, Inc 1 sts at right.

R73: K150.

Rows 74-81: As row 73 (without the shaping).

When knitting the next row: Inc 1 sts at left, Inc 1 sts at right.

R82: K152.

Rows 83-90: As row 82 (without the shaping).

When knitting the next row: Inc 1 sts at left, Inc 1 sts at right.

R91: K154.

Rows 92-99: As row 91 (without the shaping).

When knitting the next row: Inc 1 sts at left, Inc 1 sts at right.

R100: K156.

Rows 101-108: As row 100 (without the shaping).

When knitting the next row: Inc 1 sts at left, Inc 1 sts at right.

R109: K158.

Rows 110-118: As row 109 (without the shaping).

When knitting the next row: Inc 1 sts at left, Inc 1 sts at right.

R119: K160.

Rows 120-128: As row 119 (without the shaping).

When knitting the next row: Inc 1 sts at left, Inc 1 sts at right.

R129: K162.

Rows 130-168: As row 129 (without the shaping).

When knitting the next row: Dec 1 sts at left, Dec 1 sts at right.

R169: K160.

Rows 170-191: As row 169 (without the shaping).

When knitting the next row: Dec 1 sts at left, Dec 1 sts at right.

R192: K158.

Rows 193-214: As row 192 (without the shaping).

When knitting the next row: Dec 1 sts at left, Dec 1 sts at right.

R215: K156.

Rows 216-237: As row 215 (without the shaping).

When knitting the next row: Dec 1 sts at left, Dec 1 sts at right.

R238: K154.

Rows 239-260: As row 238 (without the shaping).

www.knittitude.com
Short Tight Purple Skirt
Standard Knitting Machine Pattern – Tuck
S, M, L, XL Sizes

When knitting the next row: Dec 1 sts at left, Dec 1 sts at right.
R261: K152.
Rows 262-282: As row 261 (without the shaping).
When knitting the next row: Dec 1 sts at left, Dec 1 sts at right.
R283: K150.
Rows 284-304: As row 283 (without the shaping).
Cast off remainder. End of piece.

Bottom:

Read the **Hem and Bottom Instructions** written before starting the instructions for each size. Knit 13 rows of K1 P1 Rib and cast off.

Knit 2 identical panels, sew the skirt together and steam it using a garment steamer.

If you desire to write a review for this pattern, please do so at this page:

<http://knittitude.com/short-tight-purple-skirt-machine-knitting-pattern/>

Thank you for download,

Happy Knitting,

Nicoleta Ganea

<http://knittitude.com>